

18 December 2000

No 12/2000

Main Indicators for the Finnish Economy

Charts and tables

	page	
Supply, demand and labour market		
Chart 1.1	GDP: Finland and EU countries	1
Chart 1.2	GDP: quarterly and monthly indicator	1
Chart 2	GDP by sectors of origin	2
Chart 3	Manufacturing production: Finland and EU countries	2
Chart 4	Main demand components	3
Chart 5	Household sector's saving ratio	3
Chart 6	Indicators of domestic demand	4
Chart 7	Labour force and employment	5
Chart 8	Unemployment rate: Finland and EU countries	5
Table 1	Supply, demand and labour market indicators	6
External balance and sectoral finance		
Chart 9	Exports of goods, volume	7
Chart 10	Imports of goods, volume	7
Chart 11	Foreign trade prices	8
Chart 12	External balance, trade account, current account	9
Chart 13	Sectoral Debt Ratios	9
Chart 14	Corporate sector borrowing	10
Chart 15	Household's borrowing	10
Chart 16	Central government finance	11
Chart 17	Foreign net debt, international comparison	12
Chart 18	Foreign net debt, per cent of GDP, per cent of exports	12
Table 2	External balance and sectoral finance indicators	13
Costs and prices		
Chart 19	Earnings	14
Chart 20	Relative unit labour costs in manufacturing	14
Chart 21	Producer price indices, Finland and EU countries	15
Chart 22	Consumer prices, Finland and EU countries	15
Chart 23	Import prices and producer prices	16
Chart 24	Harmonized consumer price index, Finland and Euro countries	16
Chart 25	Timber prices and export prices of forest industry products	17
Chart 26	Dwelling prices	17
Table 3	Cost and price indicators	18

Money market and monetary policy

Chart 27	Trade-weighted competitiveness indicator	19
Chart 28	Exchange rates	19
Chart 29	Rates of interest set by eurosystem	20
Chart 30	Key interest rates	20
Chart 31	Short-term domestic and foreign interest rates	21
Chart 31.1	Long-term domestic and foreign interest rates	21
Chart 32	Real and nominal interest rates, 3-month	22
Chart 32.1	Real and nominal interest rates, government bond yields, 10 year	22
Chart 33	Yield curve	23
Table 4	Interest rates and exchange rates	24

Financial market, securities market

Chart 34	Banks' markka lending rates and markka funding rates	25
Chart 35	Banks' interest rate margin	25
Chart 36	Bank funding from the public	26
Chart 37	Bank lending to the public	26
Chart 38	Outstanding bank credit	27
Chart 39	Hex, Helsinki Exchanges: share indices by sector	28
Chart 40	Hex, Helsinki Exchanges: share turnover	28
Chart 41	Hex, Helsinki Exchanges: market value	29
Chart 42	Government benchmark bonds	29
Chart 43	Stock of bonds outstanding in Finland	30
Chart 44	Foreign portfolio investments in Finland	30
Table 5	Key figures for the Finnish deposit banks	31

Chart 1.1

GROSS DOMESTIC PRODUCT: FINLAND AND EU

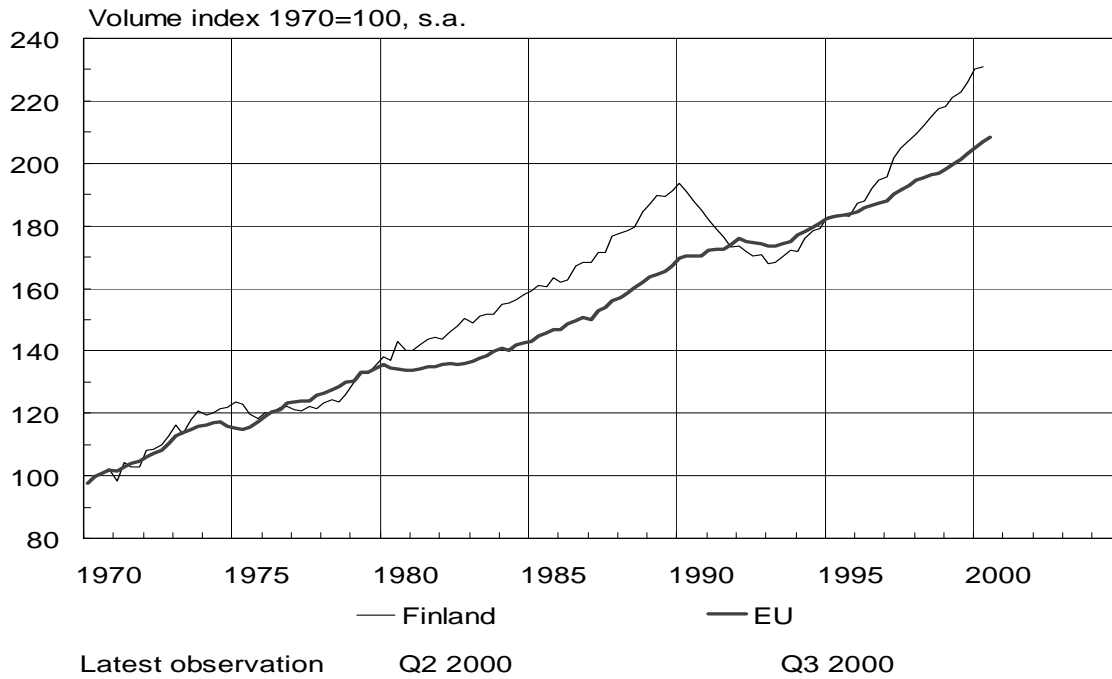


Chart 1.2

GROSS DOMESTIC PRODUCT

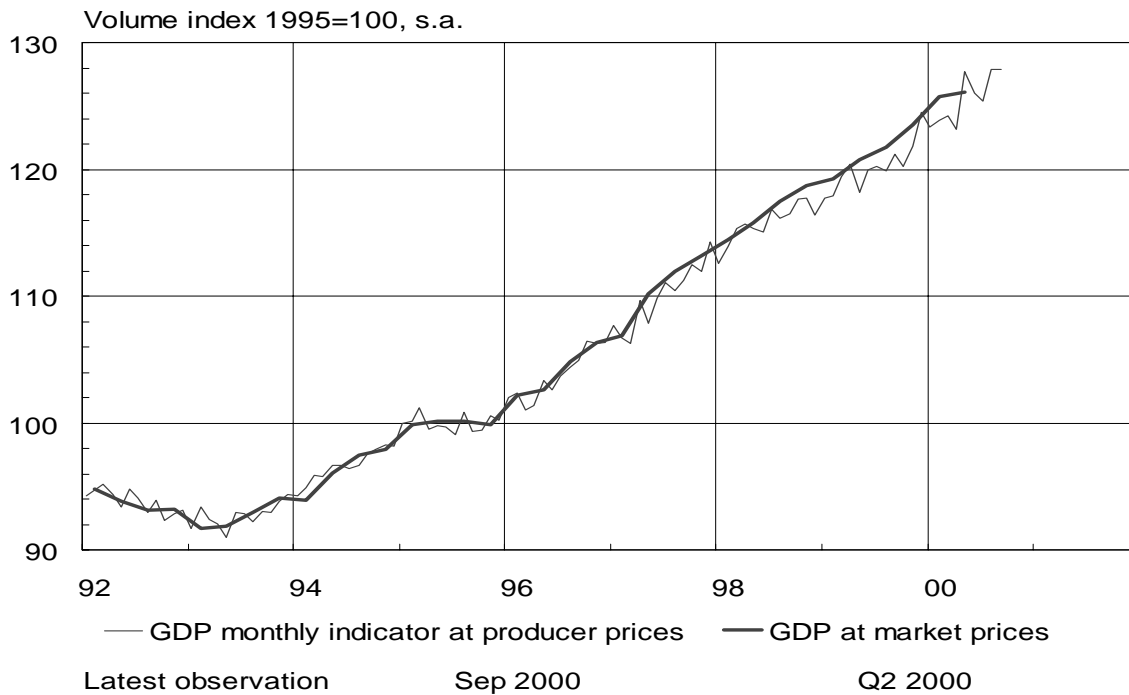
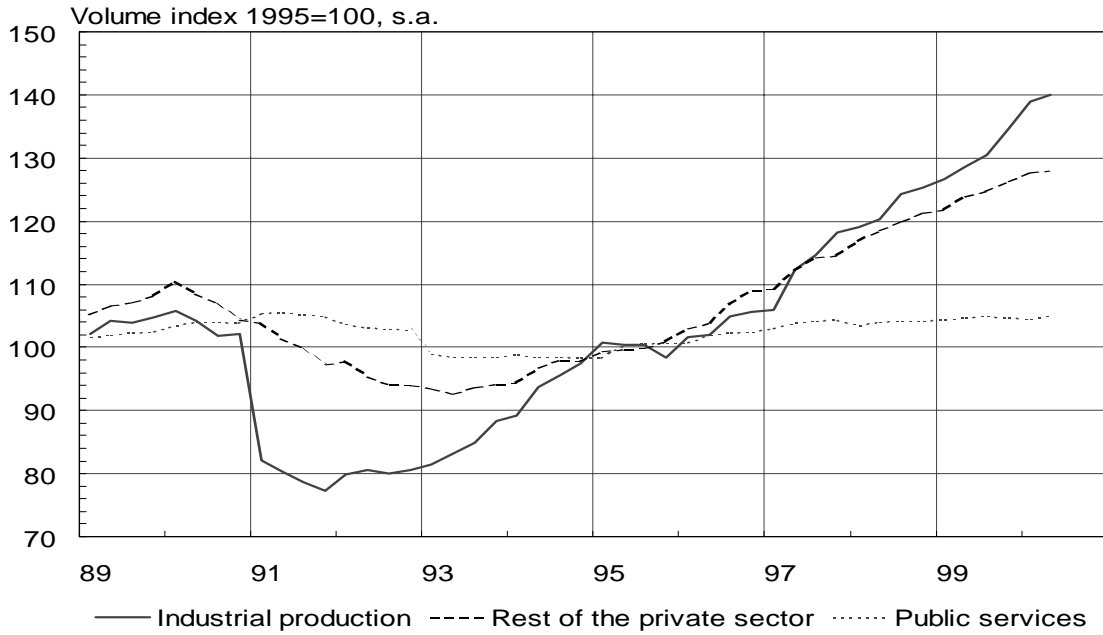


Chart 2.

GDP¹⁾ BY SECTORS OF ORIGIN

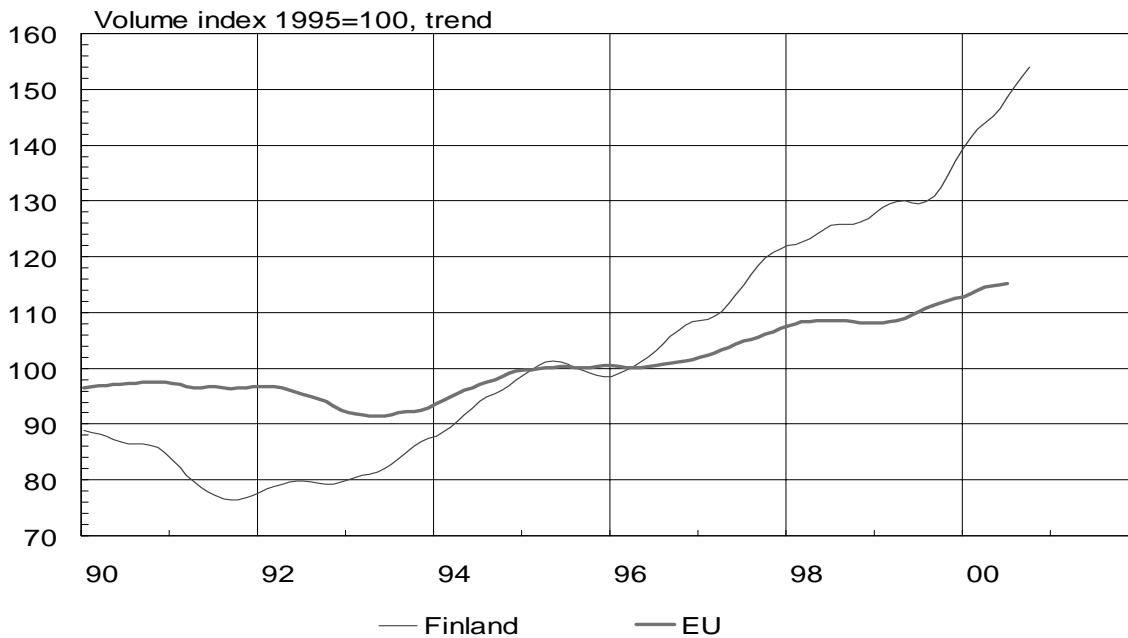


Latest observation Q2 2000

1) GDP at producer prices

Chart 3.

MANUFACTURING PRODUCTION



Latest observation

Oct 2000

Jul 2000

Chart 4.

MAIN DEMAND COMPONENTS

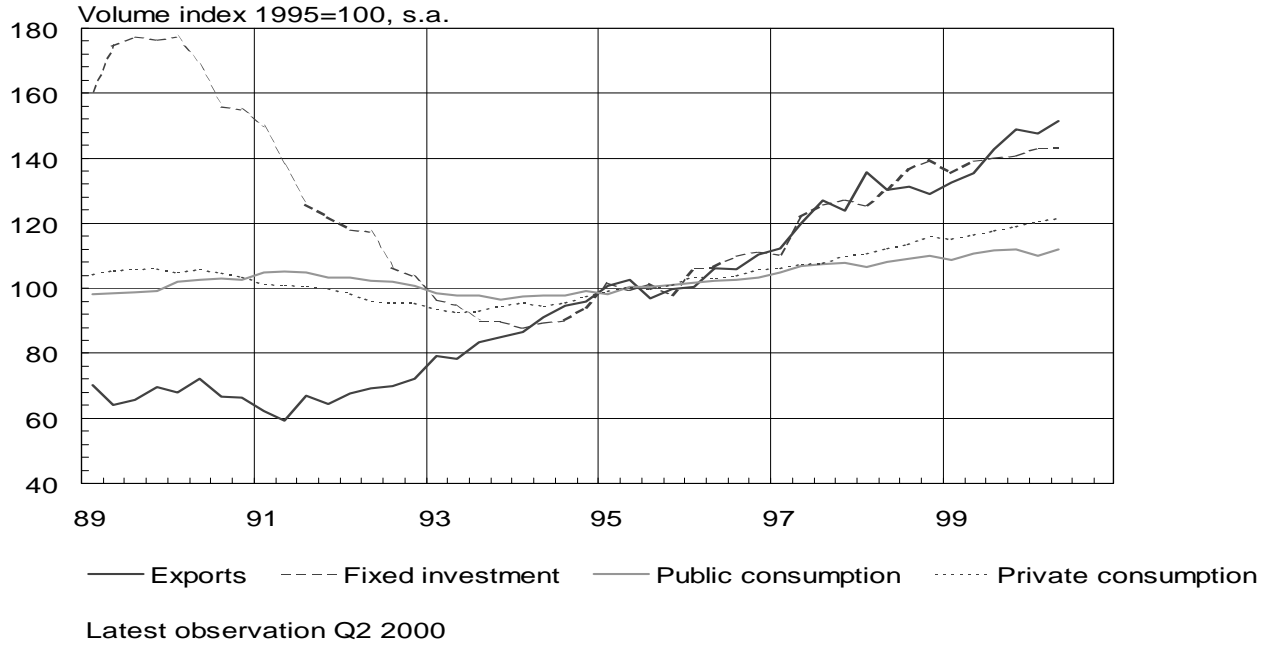


Chart 5.

HOUSEHOLD SECTOR'S SAVING RATIO

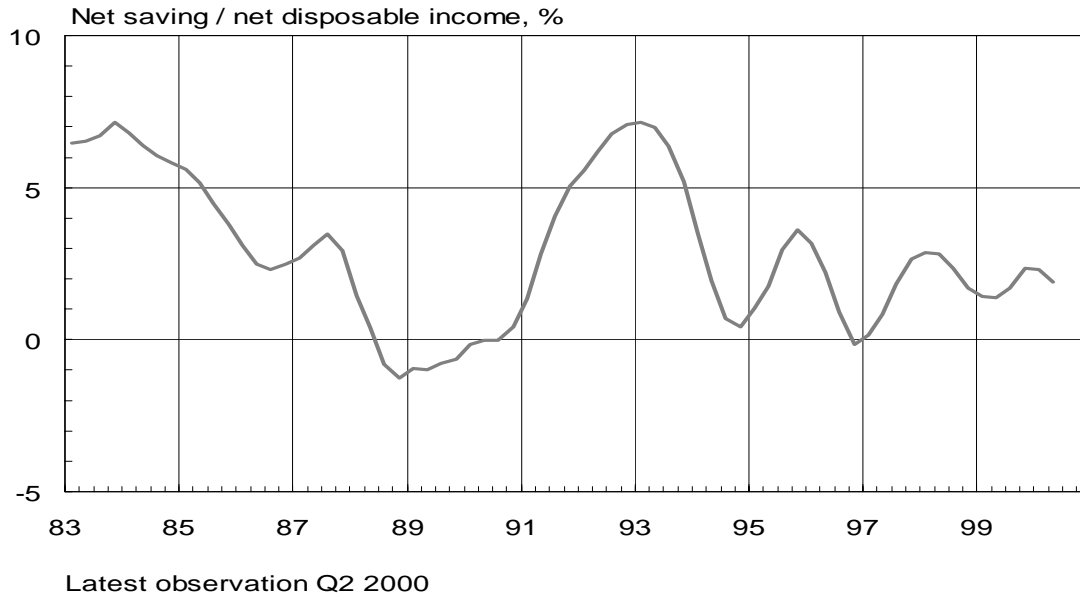
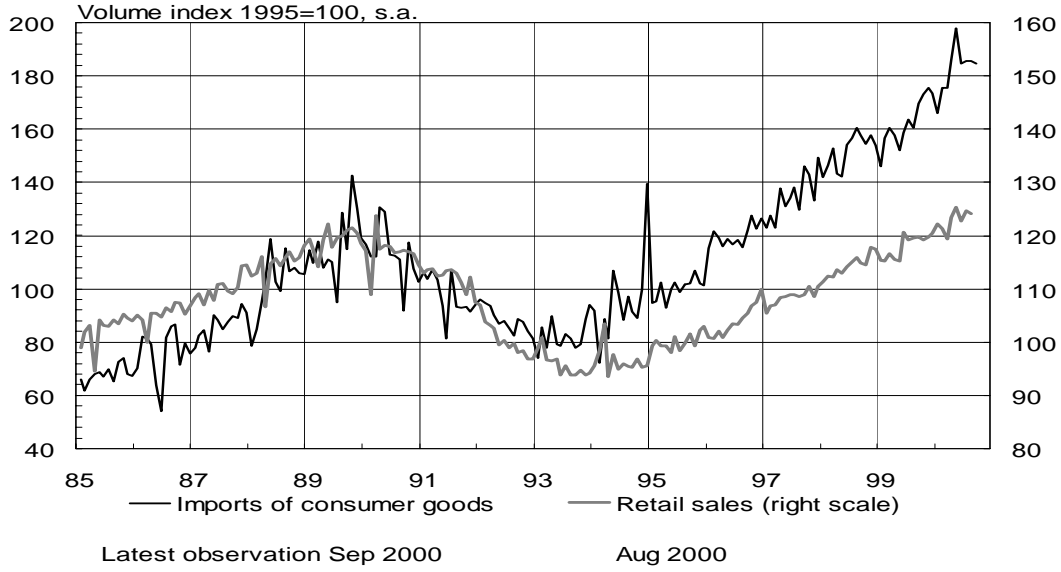


Chart 6.
INDICATORS OF DOMESTIC DEMAND
Private consumption



Fixed investment

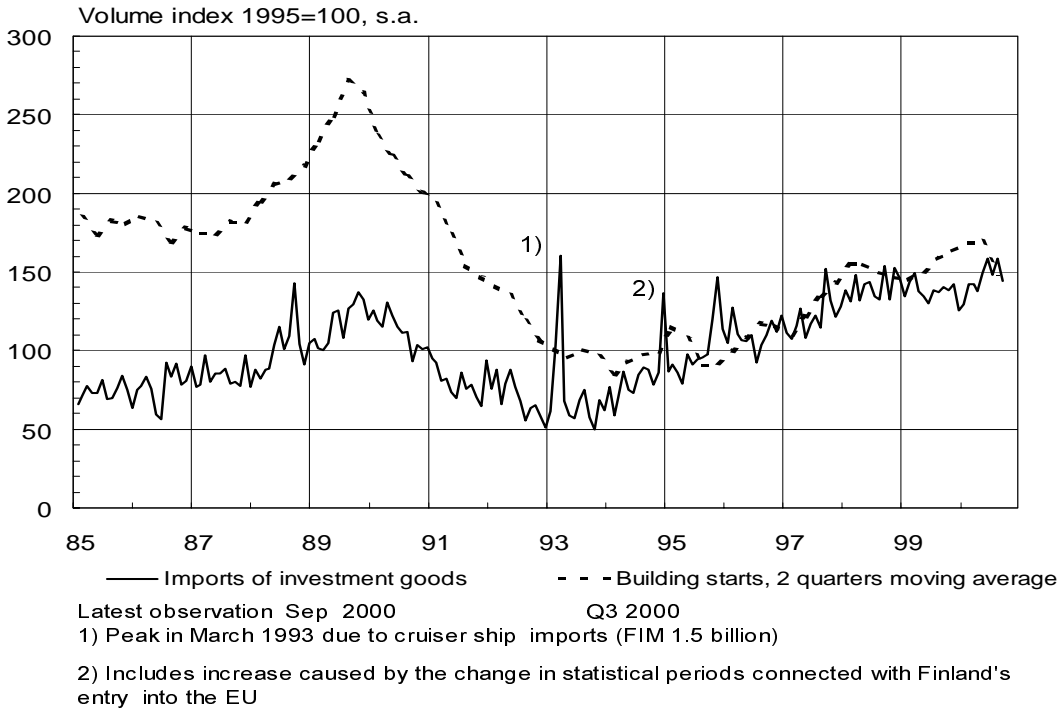
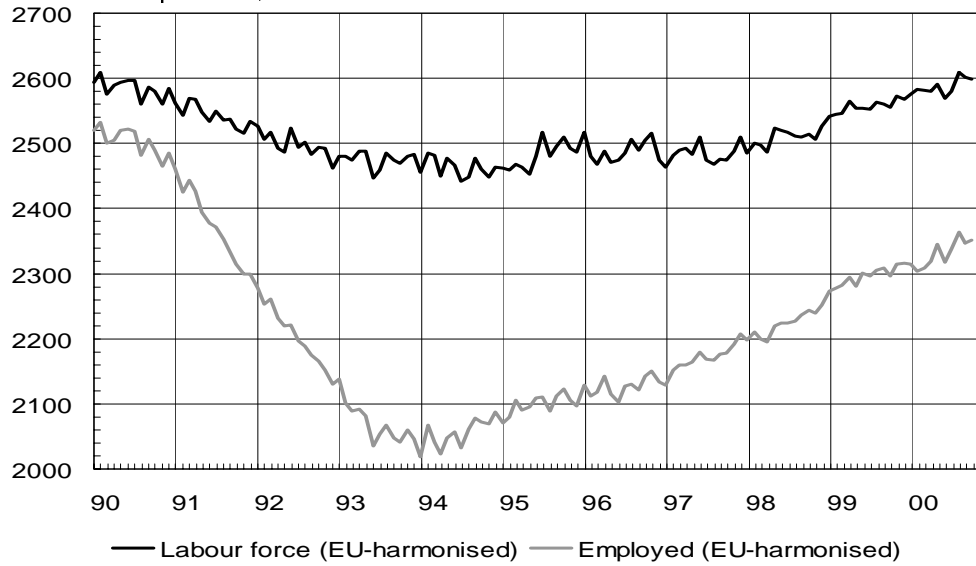


Chart 7.

LABOUR FORCE AND EMPLOYMENT

1000 persons, s.a.

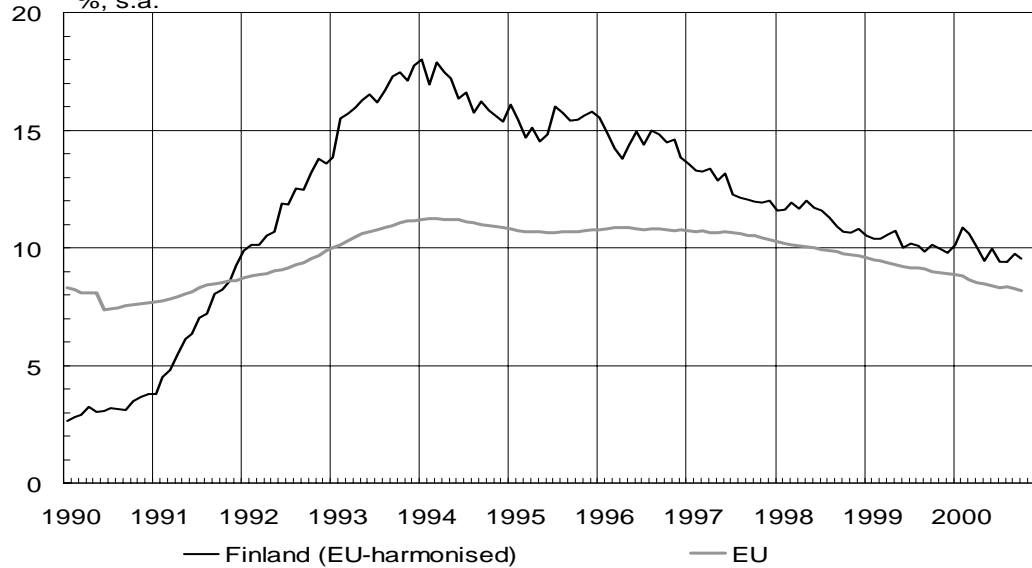


Latest observation Oct 2000

Chart 8.

UNEMPLOYMENT RATE

%, s.a.



Latest observation Oct 2000

TABLE 1

Supply, demand and labour market indicators

	1997	1998	1999	2000	
	Volume change from previous year, per cent				
Gross domestic product ¹ at market prices	6.3	5.3	4.2	4.5	Q2
GDP monthly indicator at producer prices	6.0	5.3	3.8	0.0 5.1	M09 M01-M09
Manufacturing production	10.0	9.3	5.7	20.5 12.1	M10 M01-M10
Consumption expenditure ¹	3.7	4.1	3.2	3.3	Q2
private	3.5	5.1	3.7	4.2	Q2
government	4.1	1.7	2.0	1.0	Q2
Gross fixed capital formation ¹	11.9	9.3	2.7	2.7	Q2
private	11.3	11.6	3.5	2.9	Q2
government	15.0	-1.4	-1.3	2.0	Q2
Domestic demand ¹	4.7	4.8	2.9	4.0	Q2
Exports of goods and services ¹	14.1	8.9	7.1	11.8	Q2
Imports of goods and services ¹	11.3	8.5	4.3	12.6	Q2
	Percentage change from previous year				
Employed persons ²	2.0	2.4	3.3	2.3 1.7	M10 M01-M10
	Per cent				
Unemployment rate ²	12.6	11.4	10.2	9.5 9.9	s.a. M10 M01-M10

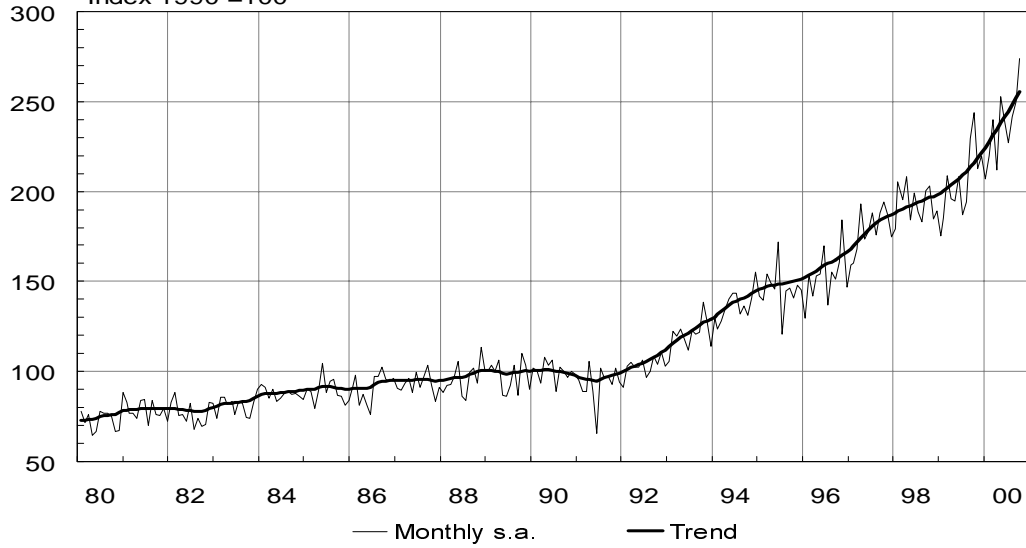
1) European System of Accounts 1995

2) EU harmonized figures

Chart 9.

EXPORTS OF GOODS, volume

Index 1990 =100

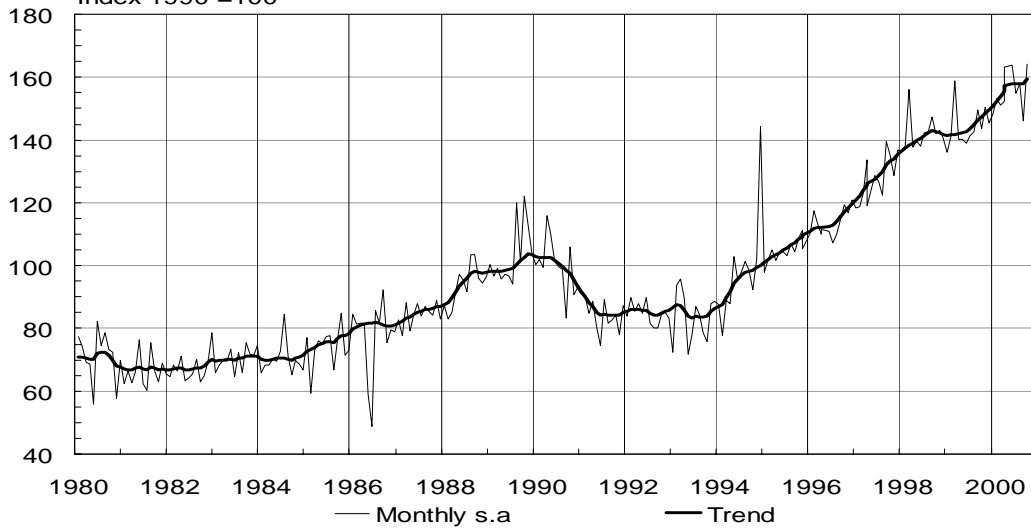


Latest observation Oct 2000

Chart 10.

IMPORTS OF GOODS, volume

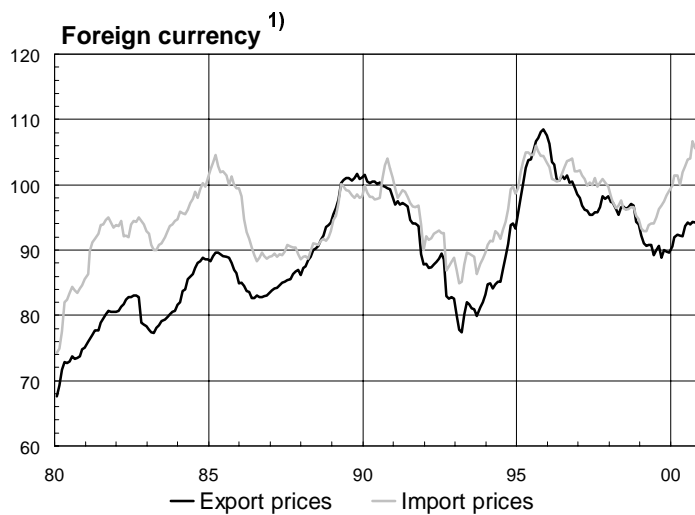
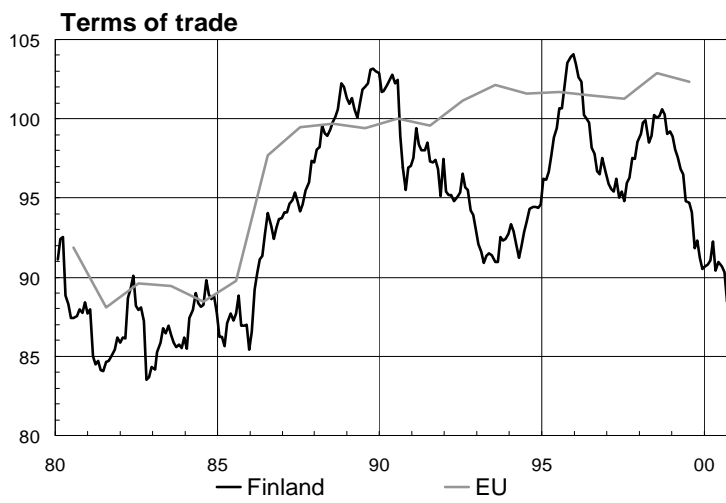
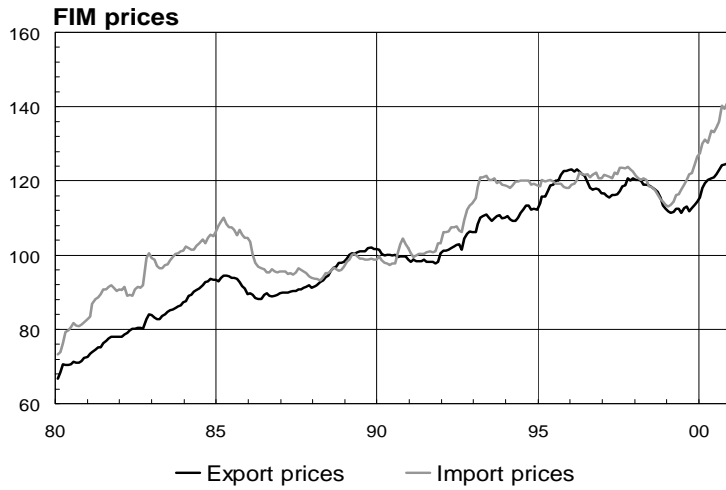
Index 1990 =100



Latest observation Oct 2000

The change in statistical periods caused by Finland's entry into the EU has not been taken into account in the seasonally-adjusted figures or in the trend for December 1994

Chart 11.
FOREIGN TRADE PRICES
 Index 1990 = 100



1) FIM prices have been deflated using the payments-weighted currency index.

Chart 12.
EXTERNAL BALANCE
12-month moving totals

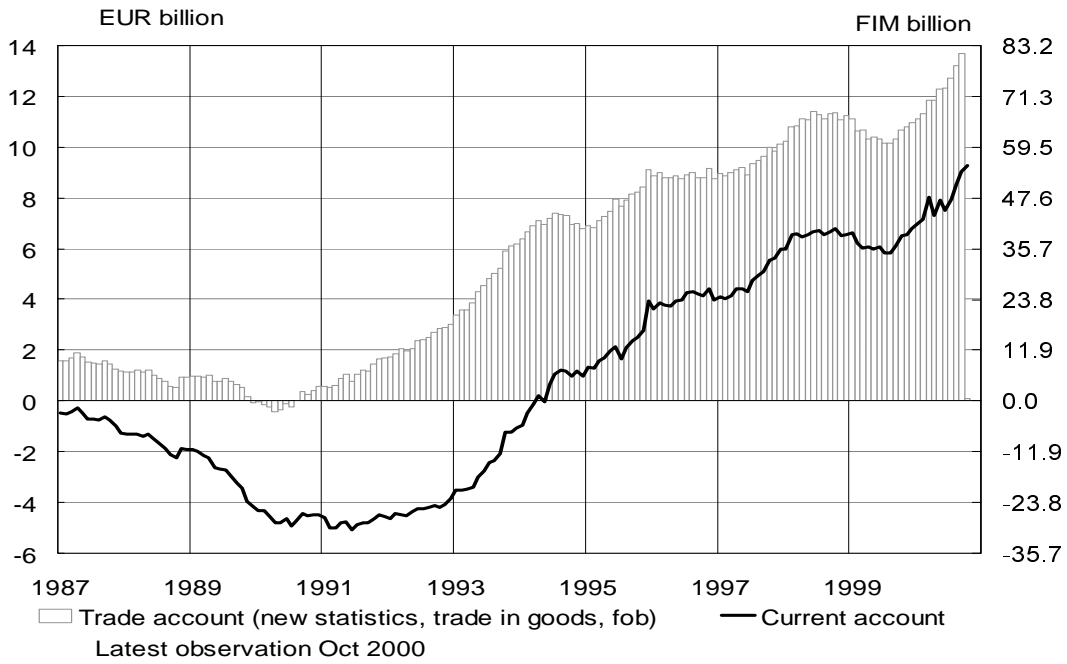


Chart 13.
SECTORAL DEBT RATIOS

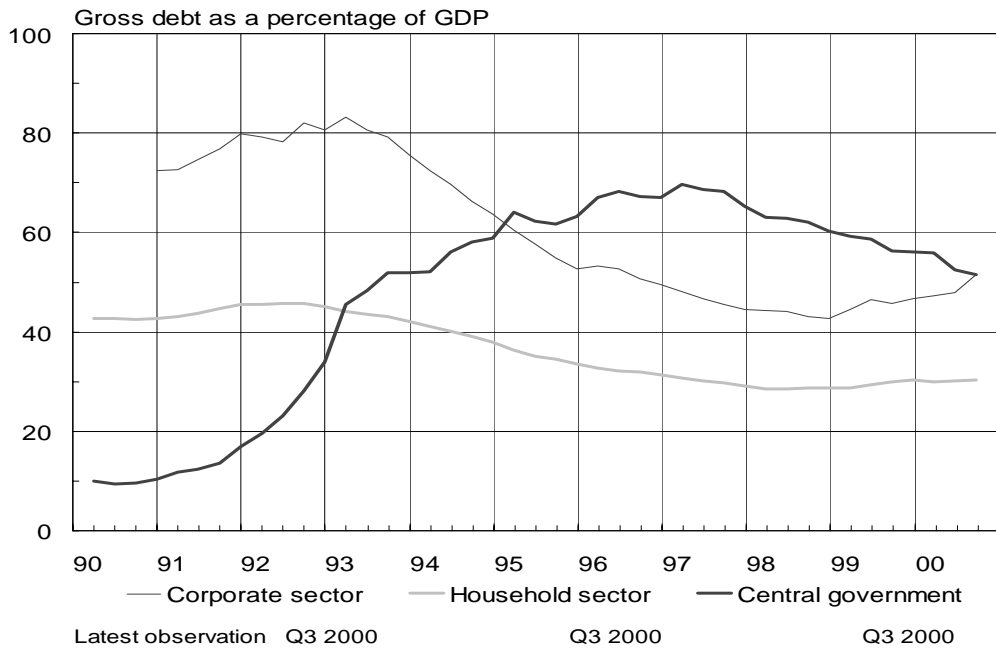


Chart 14.
CORPORATE SECTOR BORROWING

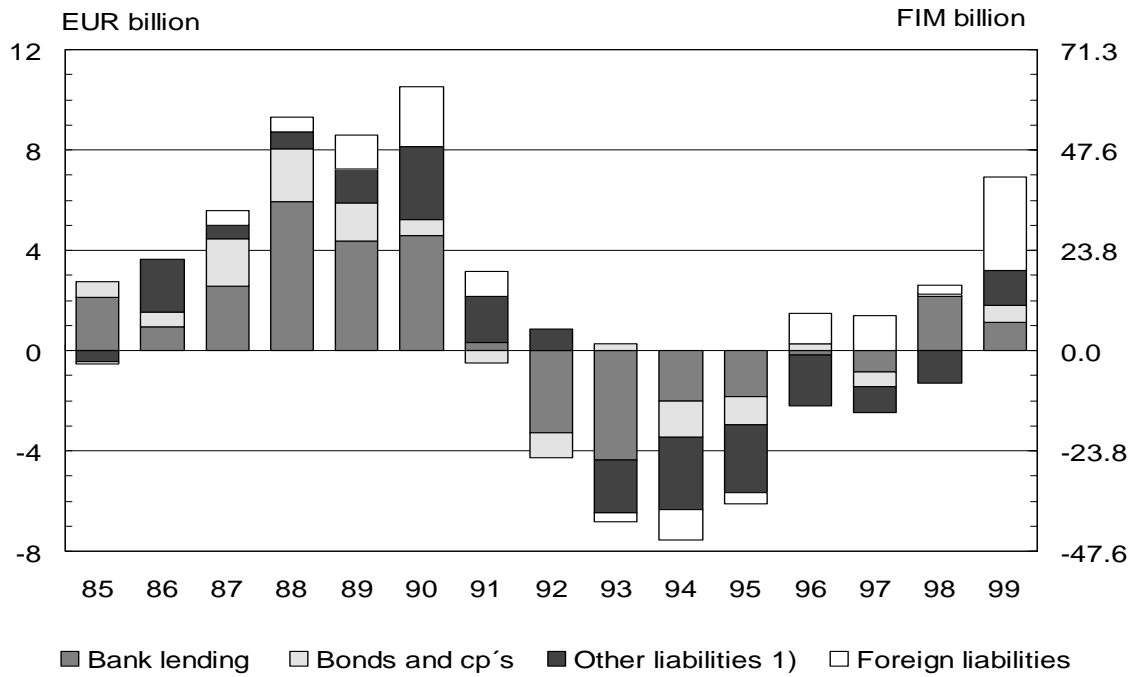
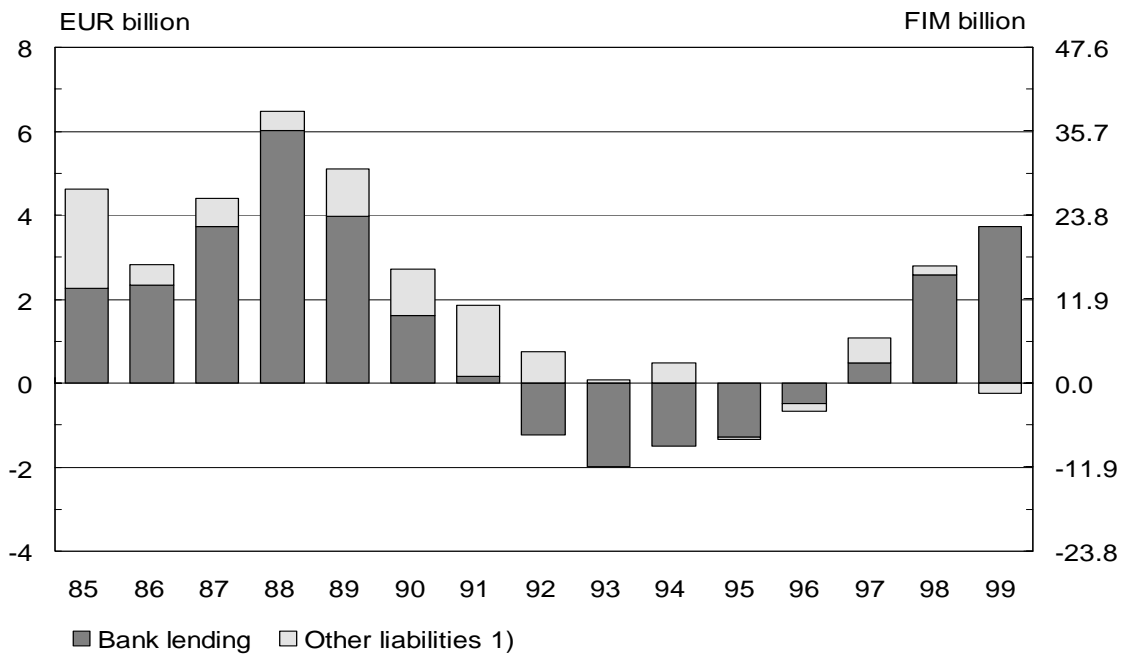


Chart 15.
HOUSEHOLDS' BORROWING

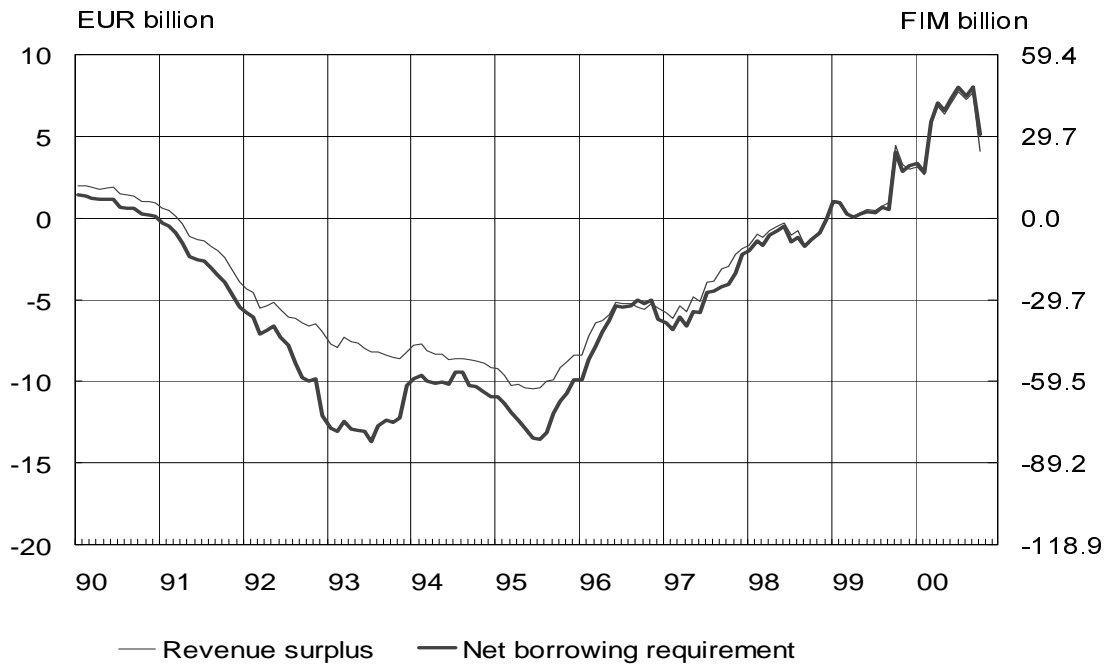
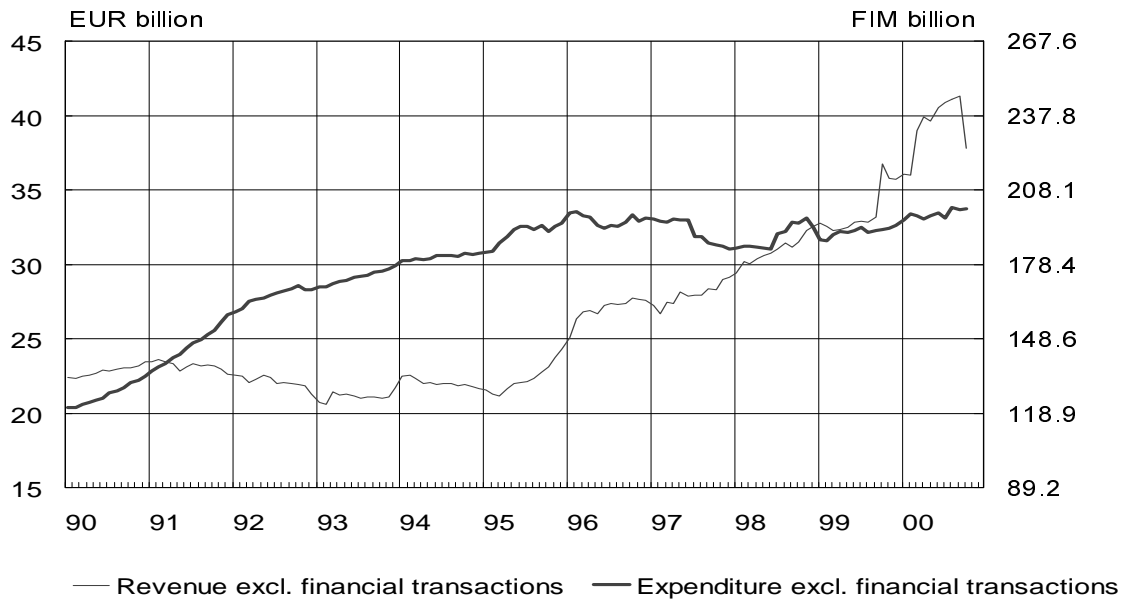


1) Due to a change (1996) in how the sectoral breakdown is made, there was a FIM 3.5 billion shift from households to the corporate sector.

Chart 16.

CENTRAL GOVERNMENT FINANCES

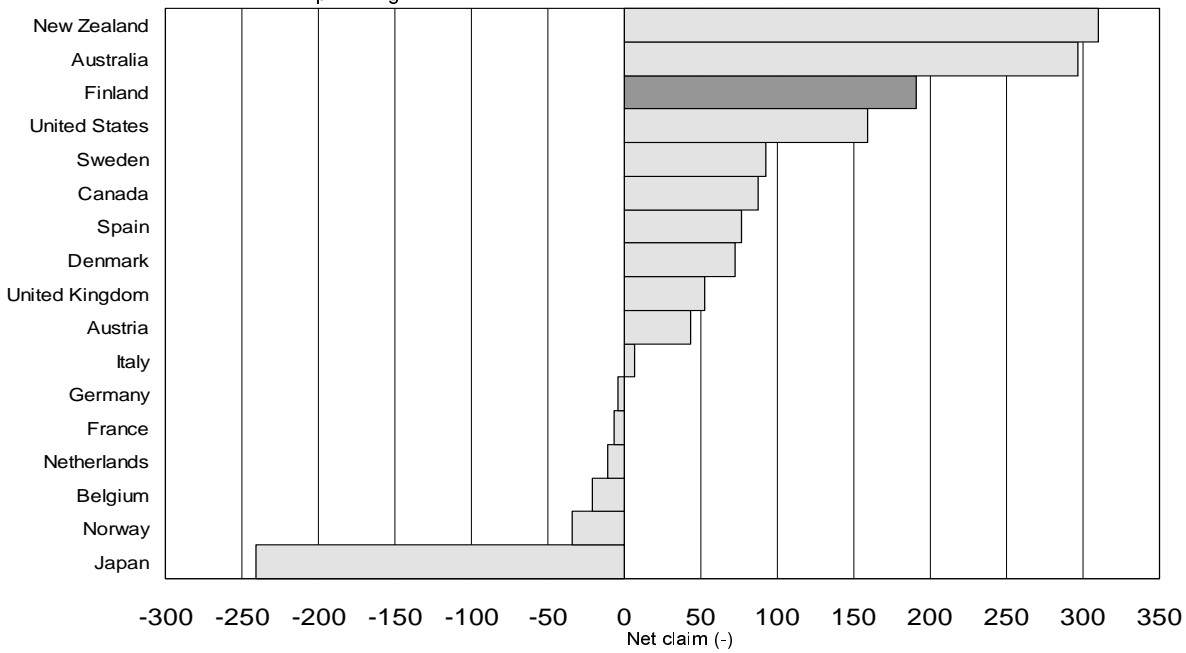
12-month moving totals



Latest observation Oct 2000

NET INTERNATIONAL INVESTMENT POSITION, international comparison

Per cent of exports of goods and services in 1998



For Netherlands the latest data available is for end 1997.

Chart 18.

FINLAND'S NET INTERNATIONAL INVESTMENT POSITION



TABLE 2

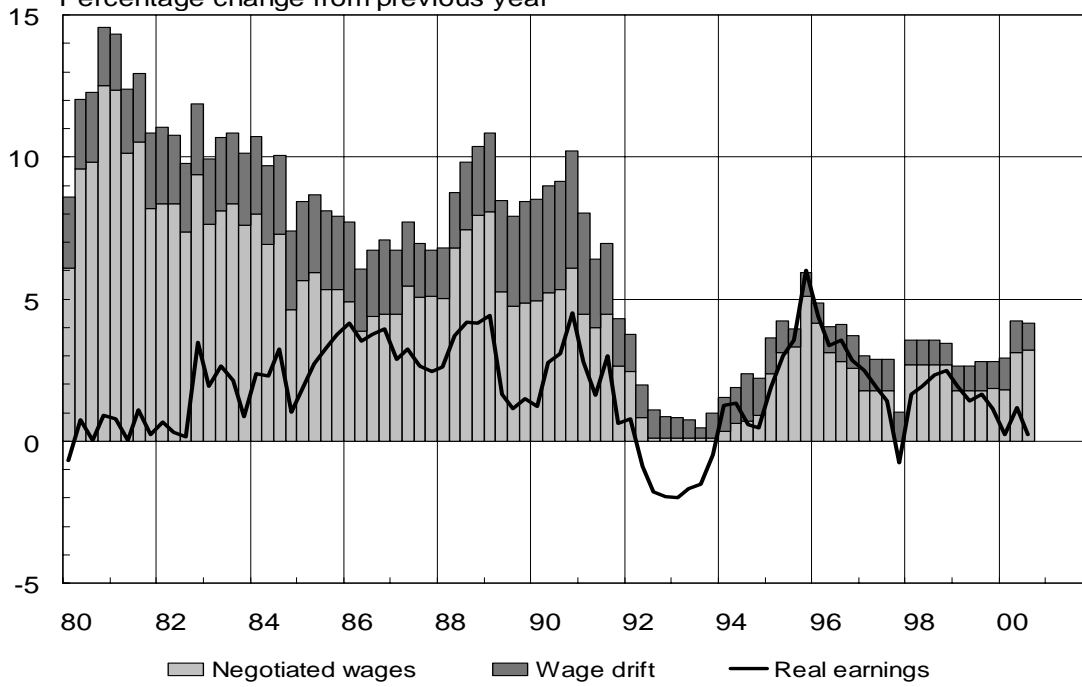
External balance and sectoral finance indicators

	1996	1997	1998	1999	2000
Trade account					
EUR billion	8.8	10.1	11.2	11.0	12.0 M01-M10 1.6 M10
per cent of GDP	8.9	9.5	9.7	9.0	
Current account					
EUR billion	4.0	6.0	6.5	6.8	7.6 M01-M10 1.4 M10
per cent of GDP	4.0	5.6	5.6	5.6	
Capital account. EUR billion	-6.3	-4.2	-6.3	-6.7	-7.0 M01-M10 -1.4 M10
General government	1.1	-1.0	-3.6	-5.3	-9.5 M01-M10 -2.1 M10
Direct investment					
to Finland	0.9	1.8	10.9	4.4	8.2 M01-M10 0.4 M10
abroad	2.8	4.6	16.8	5.5	19.6 M01-M10 0.3 M10
Shares	0.9	2.0	5.0	5.3	1.6 M01-M10 0.0 M10
Other capital (incl. errors and omissions)	-6.5	-2.4	-1.9	-5.6	12.3 M01-M10 0.5 M10
Foreign exchange reserve (increase -)	2.4	-1.8	-0.2	-0.1	-0.6 M01-M10 0.0 M10
Net lending (saving minus investment)					
Private sector					
EUR billion	7.1	7.6	5.1	4.6	
per cent of GDP	7.2	7.1	4.4	3.8	
General government					
EUR billion	-3.1	-1.6	1.5	2.2	
per cent of GDP	-3.2	-1.5	1.3	1.8	
Central government					
EUR billion	-7.1	-3.9	-1.7	-0.9	
per cent of GDP	-7.2	-3.7	-1.5	-0.8	
Local government					
EUR billion	0.8	-0.7	-0.4	-0.3	
per cent of GDP	0.8	-0.7	-0.3	-0.3	
Social security funds					
EUR billion	3.2	3.0	3.6	3.4	
per cent of GDP	3.3	2.8	3.1	2.8	
Net foreign debt					
per cent of GDP	41.9	41.5	74.1	179.0	
per cent of exports of goods and services	111.6	106.1	191.1	477.2	
Sectoral debt ratios (gross debt per cent of GDP)					
Non-financial corporate sector	48.6	43.6	41.4	43.8	
Household sector	42.0	39.7	39.0	40.1	
General government (EMU)	57.1	54.1	48.7	46.6	

Chart 19.

EARNINGS

Percentage change from previous year

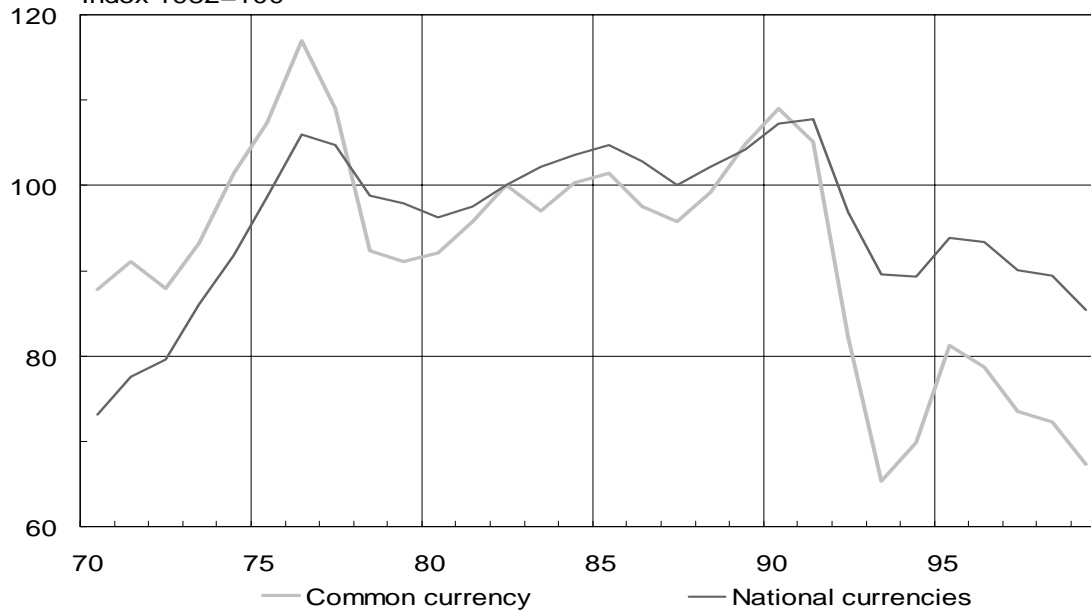


Latest observation Q3 2000

Chart 20.

RELATIVE UNIT LABOUR COSTS IN MANUFACTURING

Finland / competitor countries
Index 1982=100



Latest observation year 1999

A fall indicates improvement in competitive position

Chart 21.
PRODUCER PRICE INDICES
 12-month percentage change

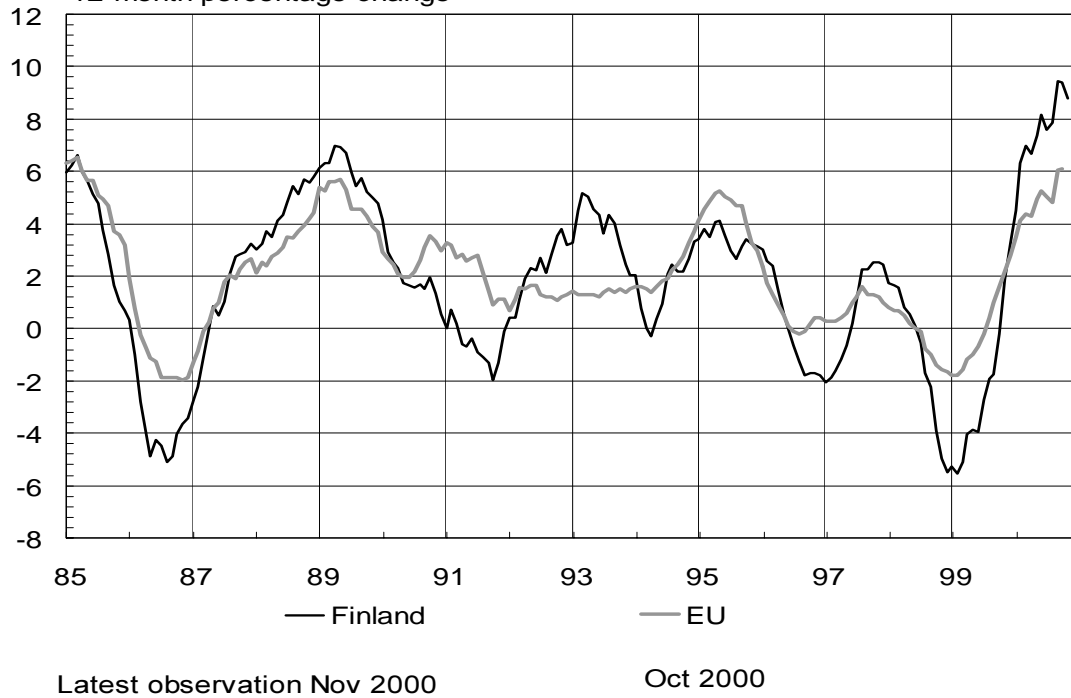


Chart 22.
CONSUMER PRICES
 12-month percentage change

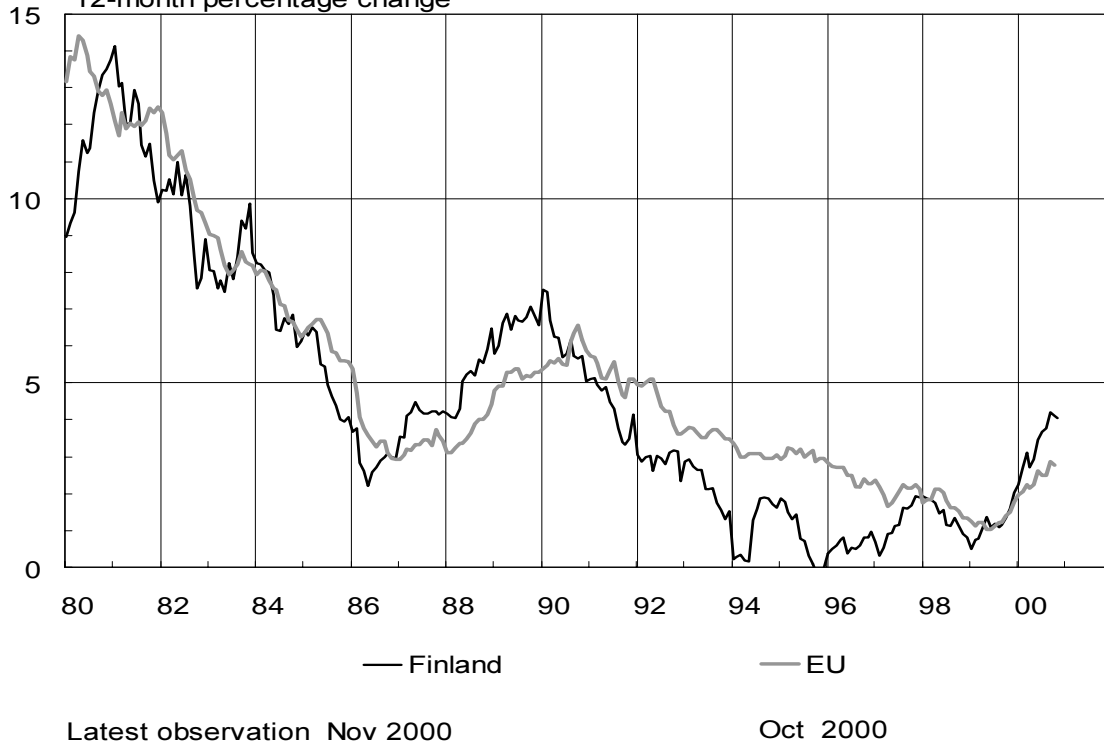
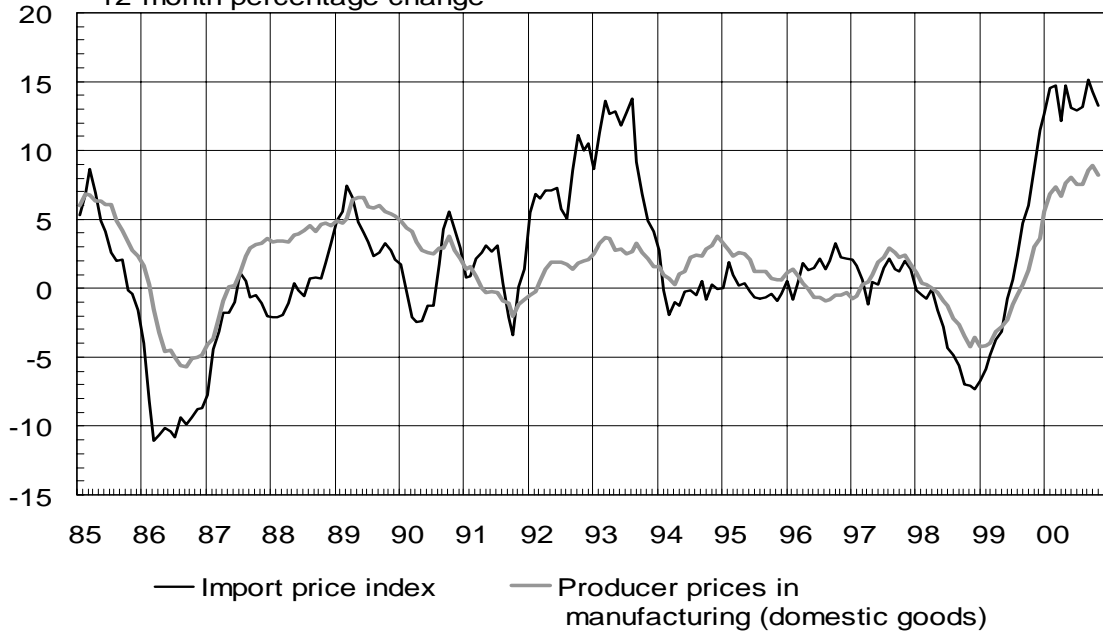


Chart 23 .

IMPORT PRICES AND PRODUCER PRICES

12-month percentage change

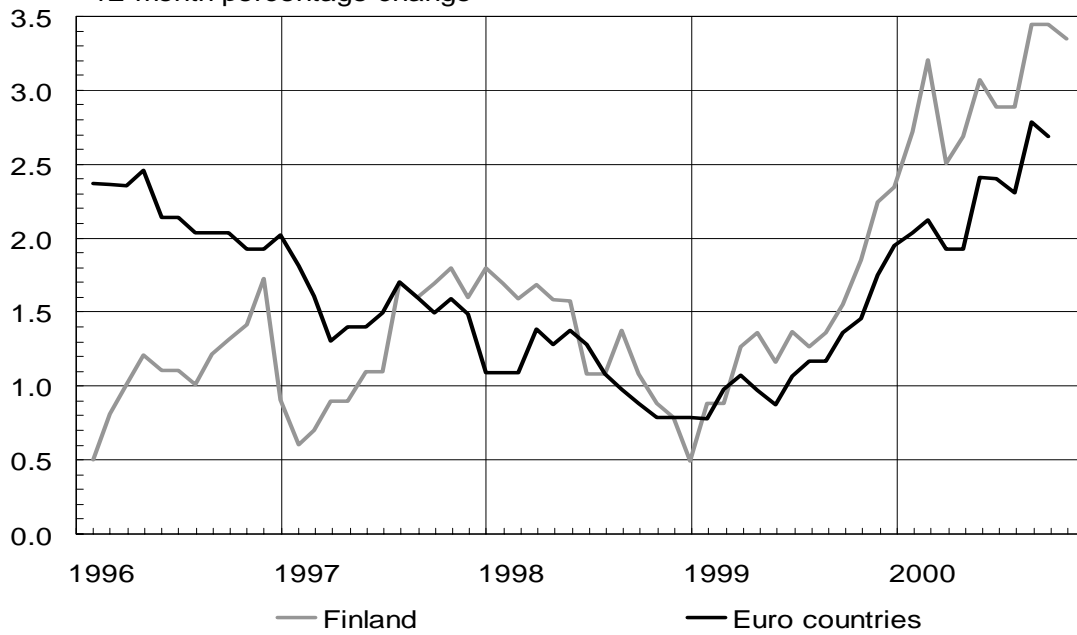


Latest observation Nov 2000

Chart 24.

HARMONIZED CONSUMER PRICE INDEX

12-month percentage change



Latest observation Nov 2000

Oct 2000

Chart 25.

TIMBER PRICES AND EXPORT PRICES OF FOREST INDUSTRY PRODUCTS

Index 1980 = 100



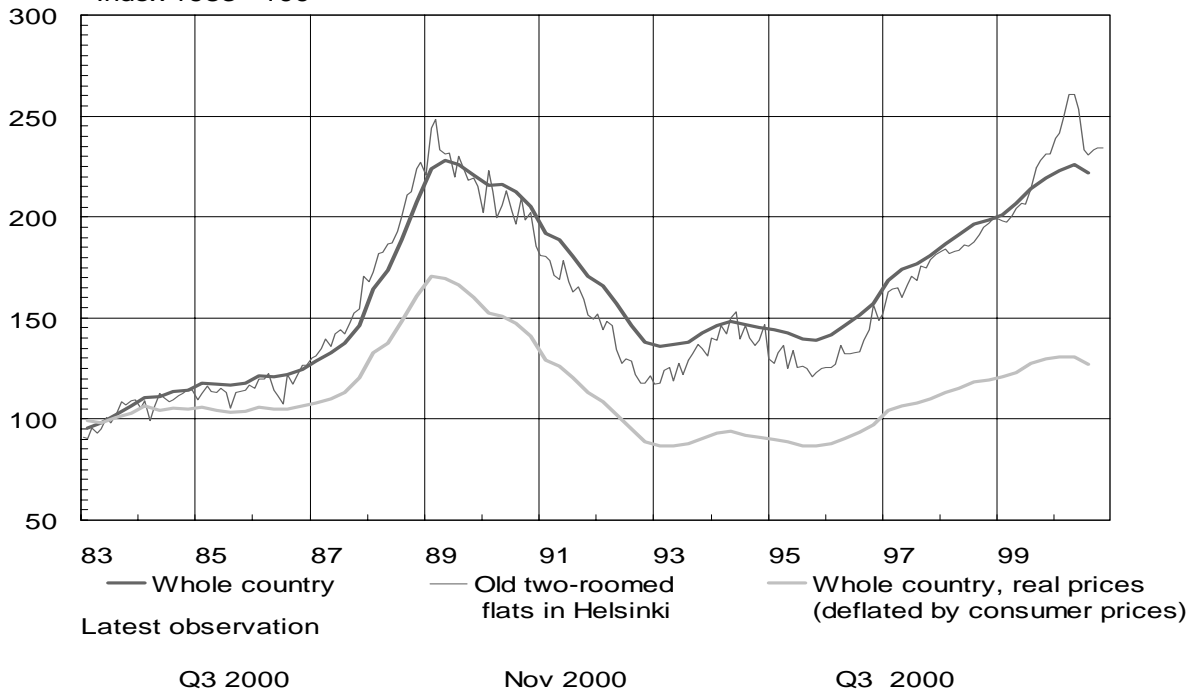
Latest observation Nov 2000

1) Export price index of Statistics Finland from beginning of 1995

Chart 26.

DWELLING PRICES

Index 1983 =100



Latest observation

TABLE 3

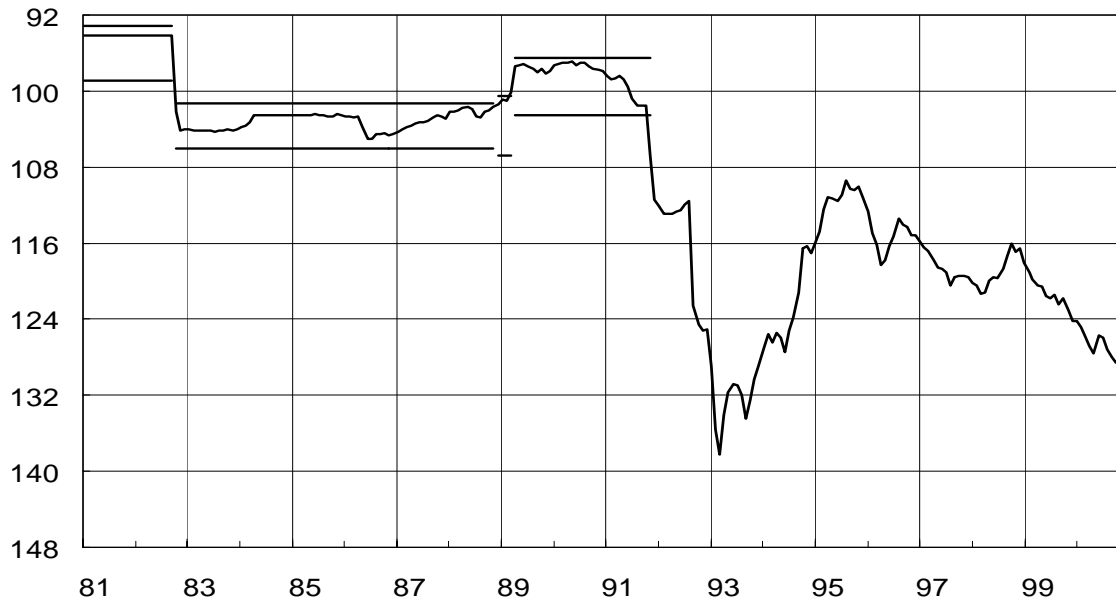
Cost and price indicators, percentage change

	1998	1999	2000
Labour costs			
Index of wages and salaries	3.5	2.7	4.1 Q3
Unit labour costs			
Whole economy	1.9	2.2	..
Manufacturing	-1.0	0.6	..
Price indices			
Export prices	0.0	-4.4	9.6 M11 7.9 M01-M11
Import prices	-3.5	0.6	13.2 M11 13.7 M01-M11
Producer prices	-1.1	-2.5	8.2 M11 7.5 M01-M11
Wholesale prices	-1.5	-0.1	8.8 M11 8.3 M01-M11
Consumer prices	1.4	1.2	4.0 M11 3.4 M01-M11
Indicator of the underlying inflation	1.0	1.3	4.3 M10 3.5 M01-M10
Asset prices			
Stumpage prices	3.0	1.9	5.6 M10 6.3 M01-M10
Dwelling prices	10.2	8.9	3.5 Q3
Share prices	41.6	72.1	31.6 M11 104.8 M01-M11

Chart 27.

TRADE-WEIGHTED COMPETITIVENESS INDICATOR (OLD BANK OF FINLAND CURRENCY INDEX)

Index 1982=100



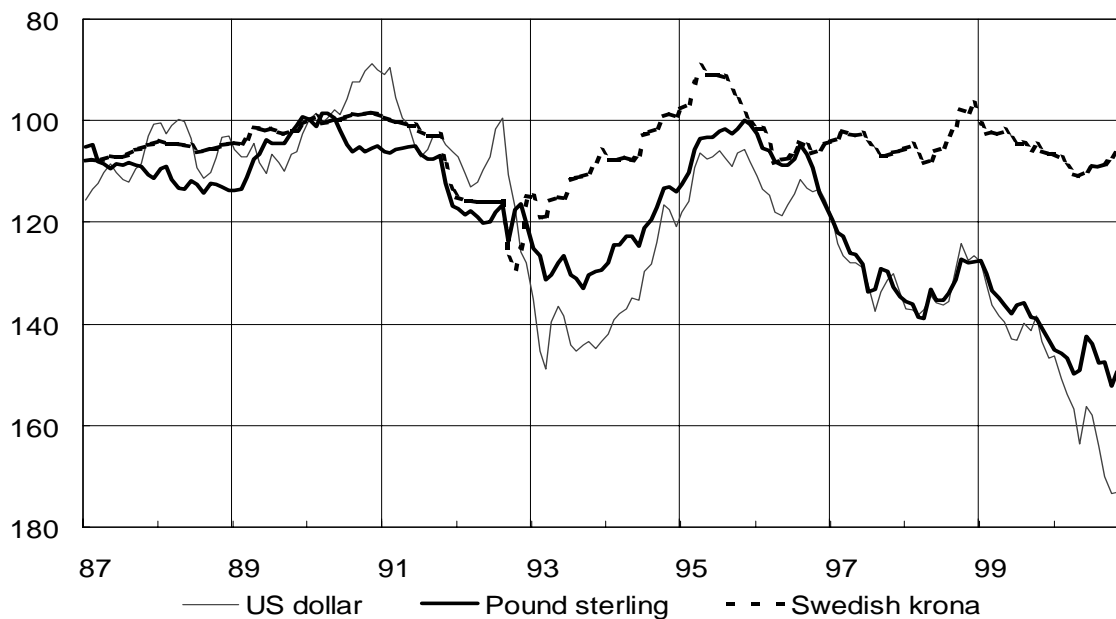
Latest observation Nov 2000

Chart 28.

EXCHANGE RATES

Rising curve=EURO strengthens

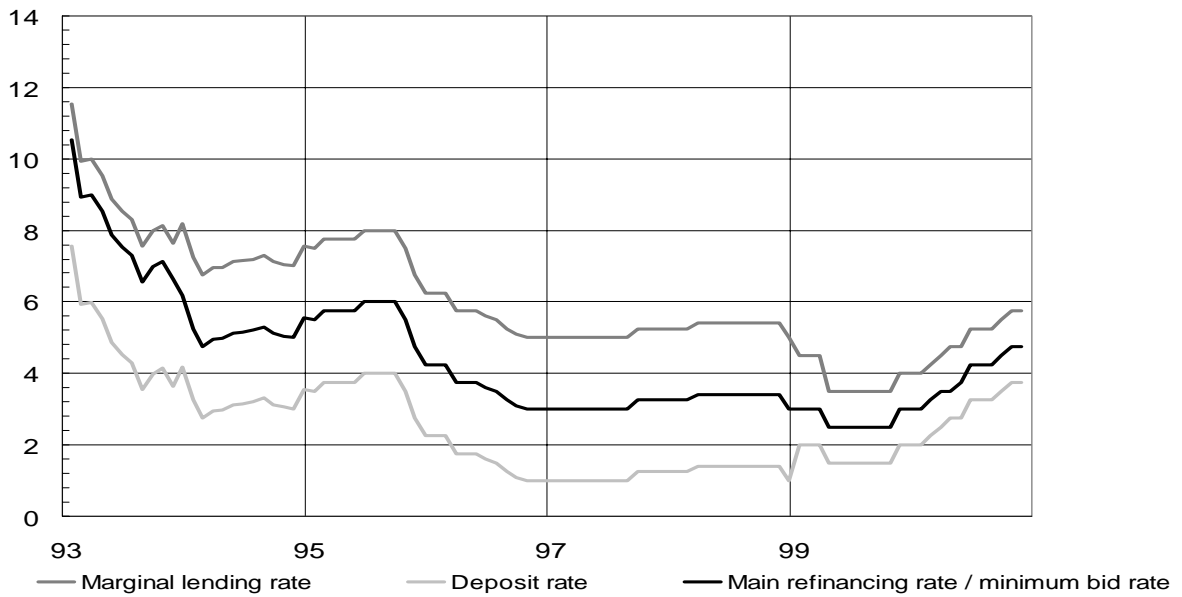
Monthly averages of selling rates in EURO, January 1990=100



Exchange rates until 31 Dec 1998 are based on corresponding Finnish markka rates converted into euro rates at the fixed conversion rate 5.94573.

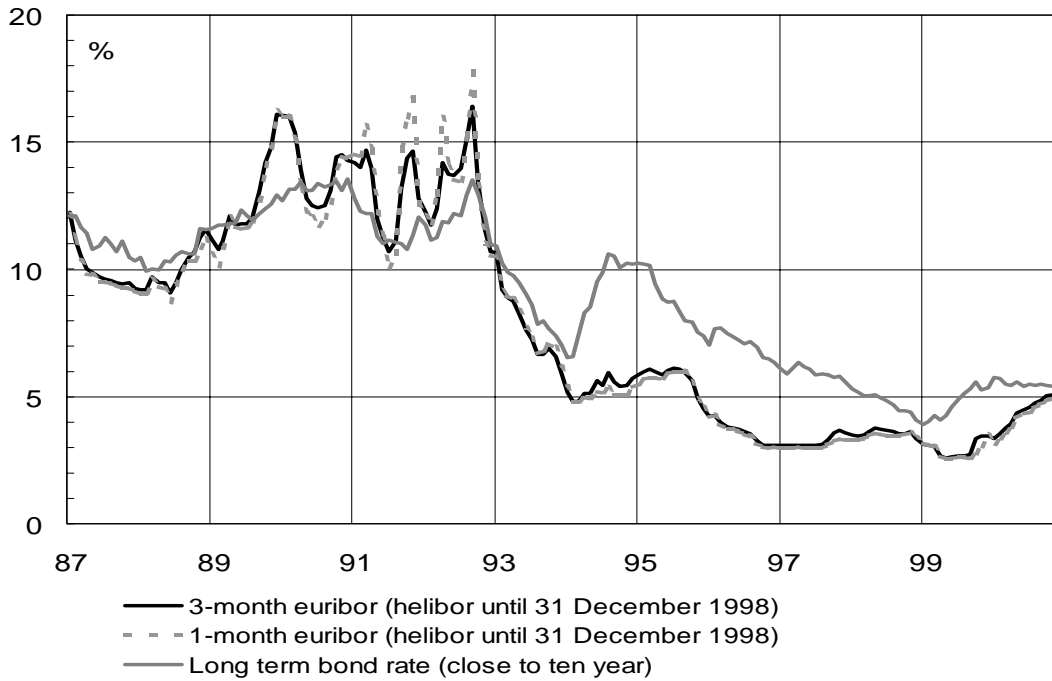
Latest observation Nov 2000

Chart 29.

RATES OF INTEREST SET BY EUROSYSTEM

Until 31 Dec 1998 the corresponding rates set by the Bank of Finland.
 Latest observation Nov 2000

Chart 30.

KEY INTEREST RATES

Latest observation Nov 2000

Chart 31.

SHORT-TERM DOMESTIC AND FOREIGN INTEREST RATES

3-month interest rates, %

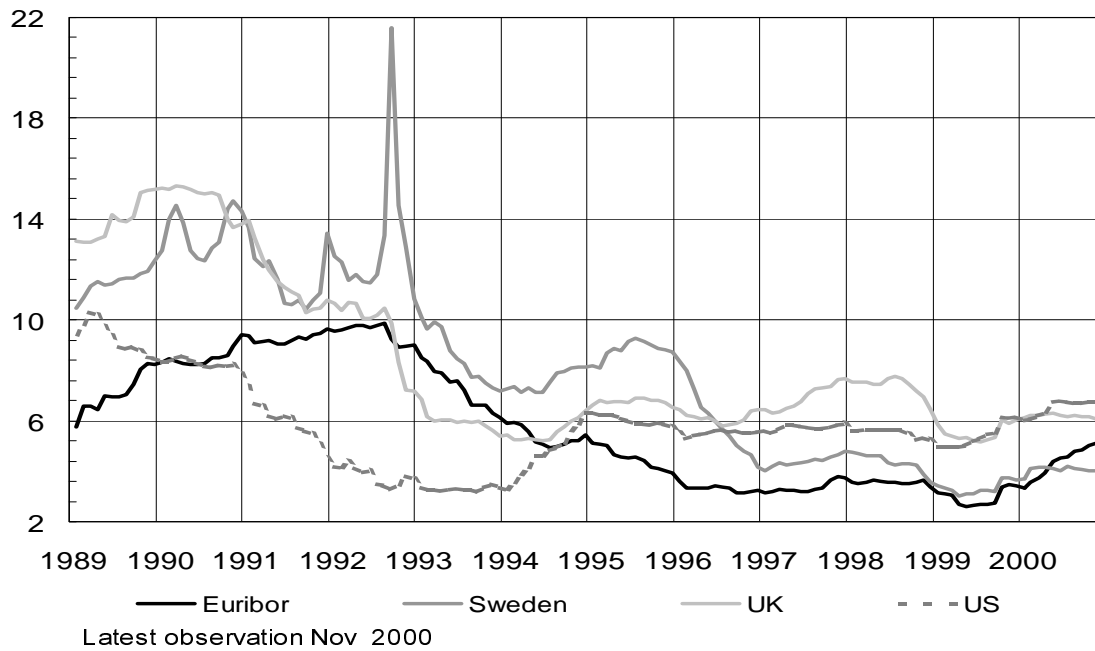


Chart 31.1.

LONG-TERM DOMESTIC AND FOREIGN INTEREST RATES

Government bond yields, close to 10 year, %

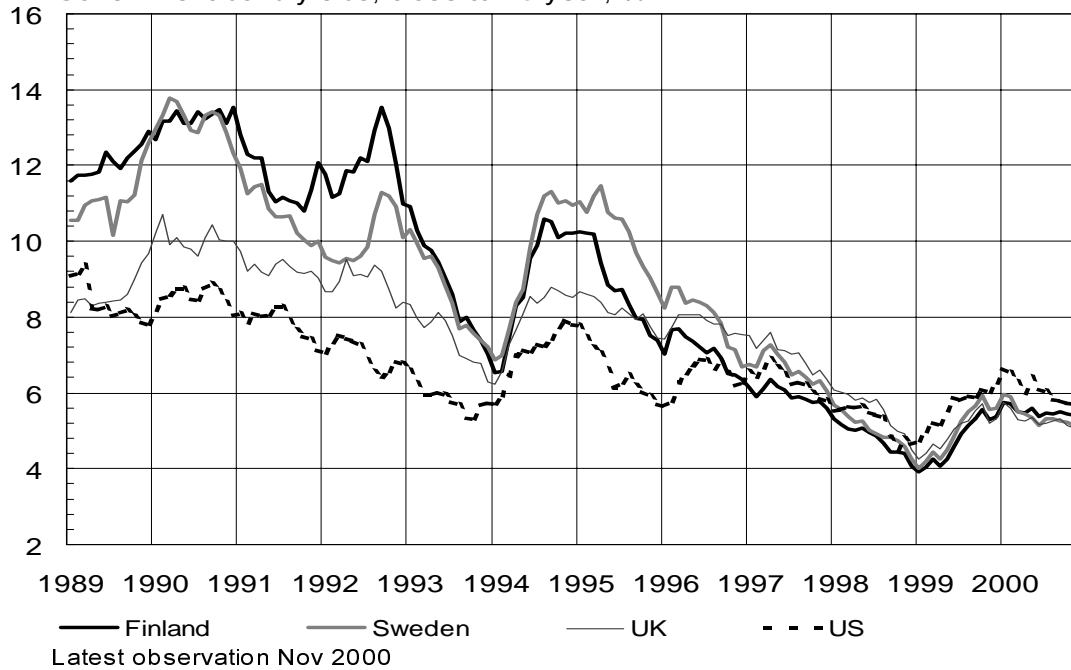
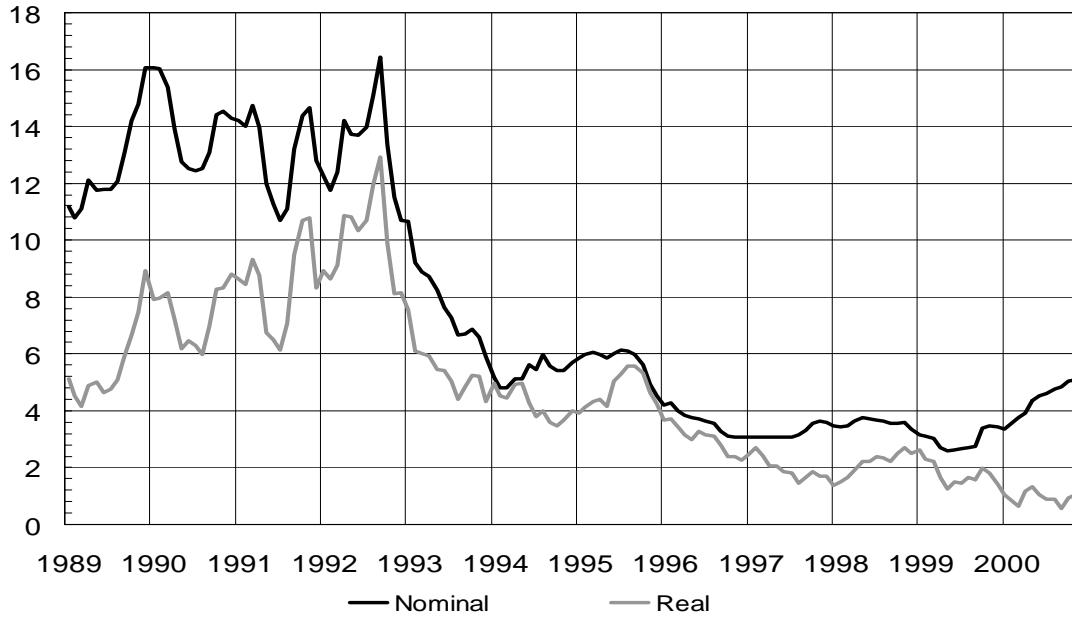


Chart 32.

REAL AND NOMINAL INTEREST RATES

3-month interest rates, %

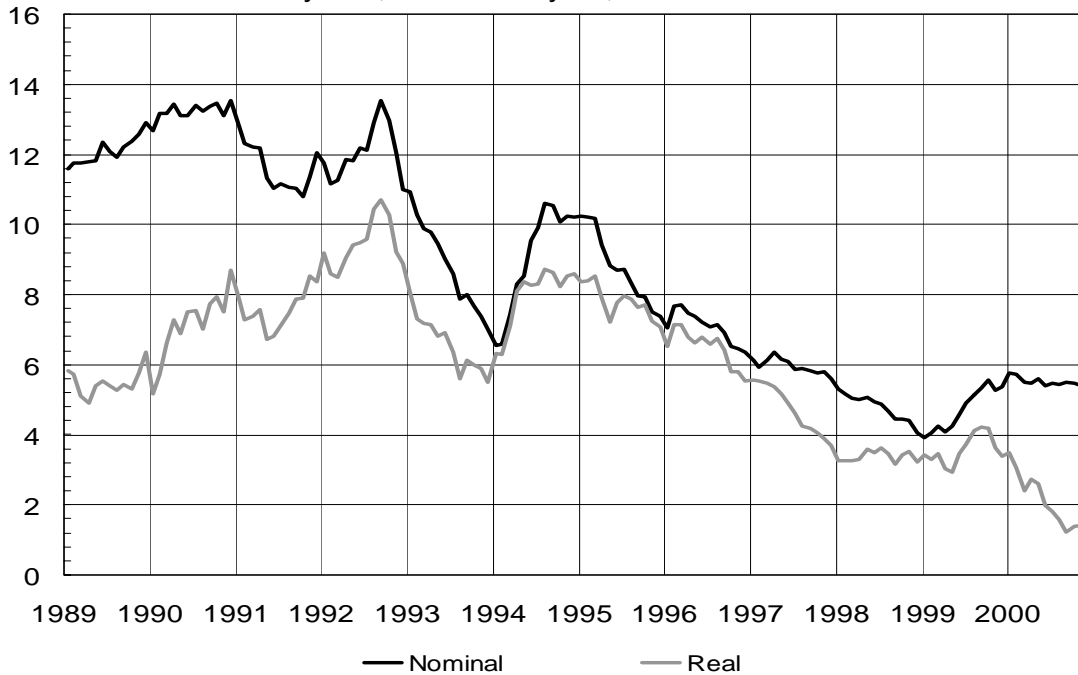


3-month euribor (from January 1999)
 Latest observation Nov 2000

Chart 32.1.

REAL AND NOMINAL INTEREST RATES

Government bond yields, close to 10 year, %



Latest observation Nov 2000

Chart 33.

YIELD CURVE

Maturities over one year based on government benchmark bonds, %

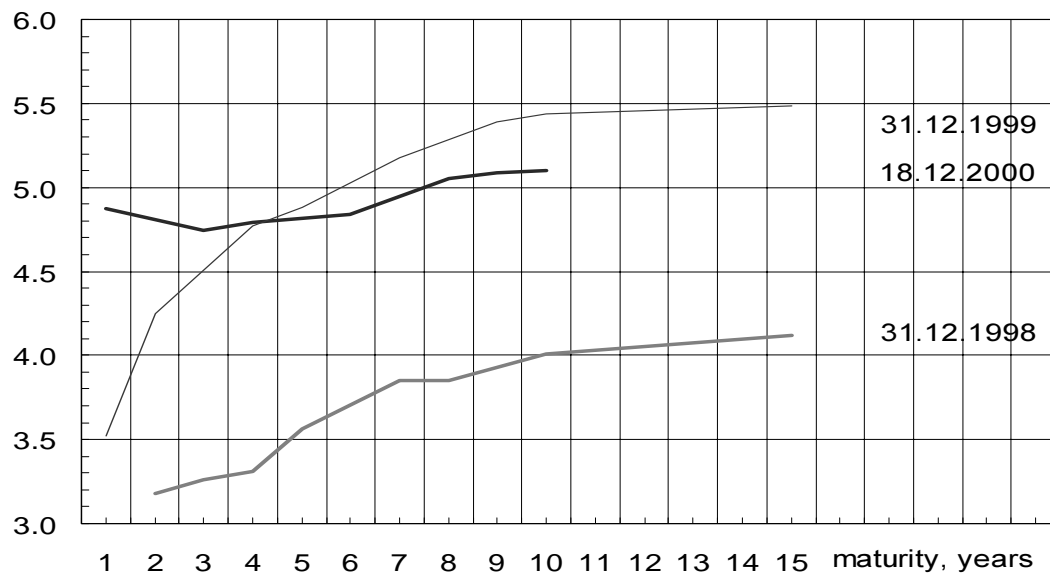


TABLE 4

Interest rates and exchange rates

Market rates, %, daily averages

	1999	5/2000	6/2000	7/2000	8/2000	9/2000	10/2000	11/2000
EURIBOR								
1 month	2.86	4.16	4.37	4.41	4.57	4.70	4.85	4.92
3 months	2.96	4.36	4.50	4.58	4.78	4.85	5.04	5.09
6 months	3.05	4.54	4.68	4.84	5.01	5.04	5.10	5.13
12 months	3.18	4.85	4.97	5.11	5.25	5.22	5.22	5.19
Yields on government bonds								
5 years	4.07	5.48	5.31	5.42	5.41	5.42	5.34	5.26
10 years	4.74	5.59	5.39	5.48	5.43	5.49	5.45	5.40

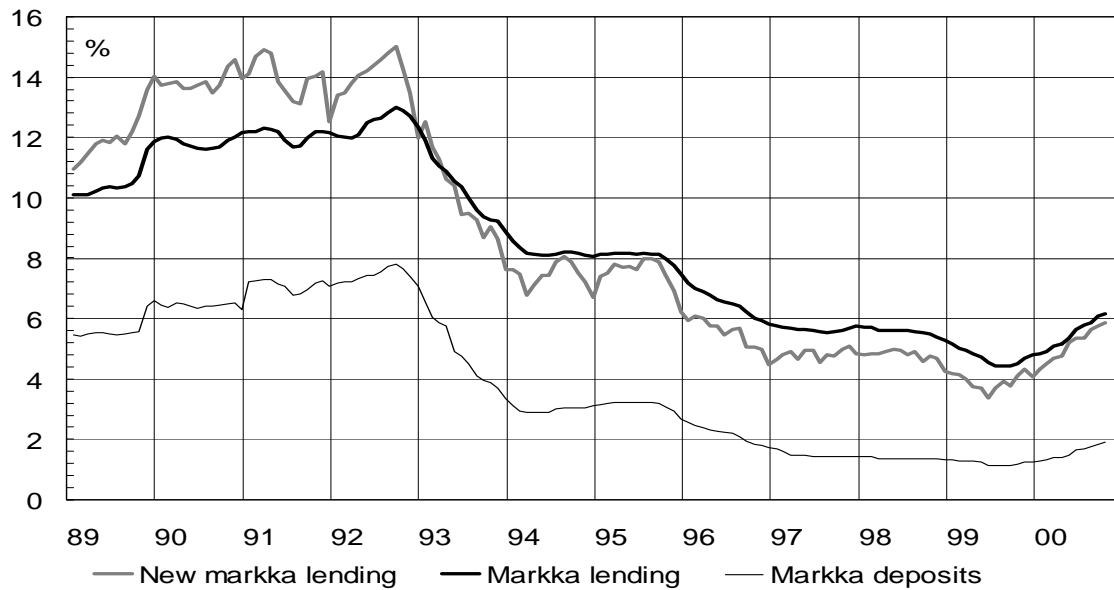
Exchange rates, daily averages

EUR exchange rate against
US dollar, Pound sterling and Swedish krona

Daily average								
US dollar	1.066	0.906	0.949	0.940	0.904	0.872	0.855	0.856
Pound sterling	0.659	0.601	0.629	0.623	0.607	0.608	0.589	0.600
Swedish krona	8.807	8.241	8.318	8.407	8.392	8.414	8.524	8.630
Trade-weighted competitiveness indicator 1982=100	121.2	127.6	125.7	125.9	127.2	128.0	128.5	128.0

Chart 34.

BANKS' MARKKA LENDING RATES AND MARKKA FUNDING RATES

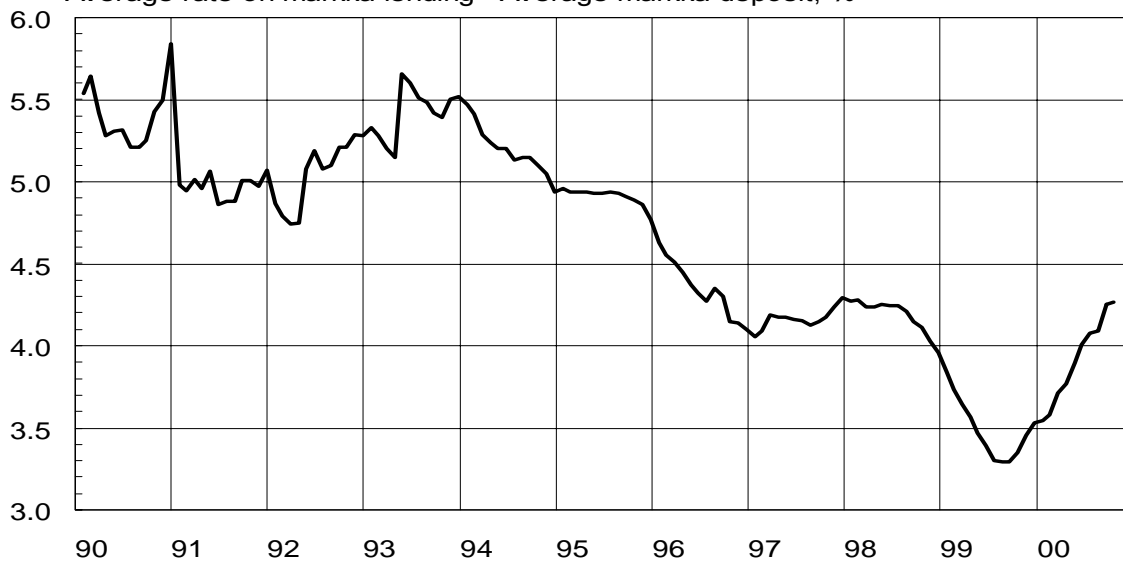


Latest observation Oct 2000

Chart 35.

BANKS' INTEREST RATE MARGIN

Average rate on markka lending - Average markka deposit, %

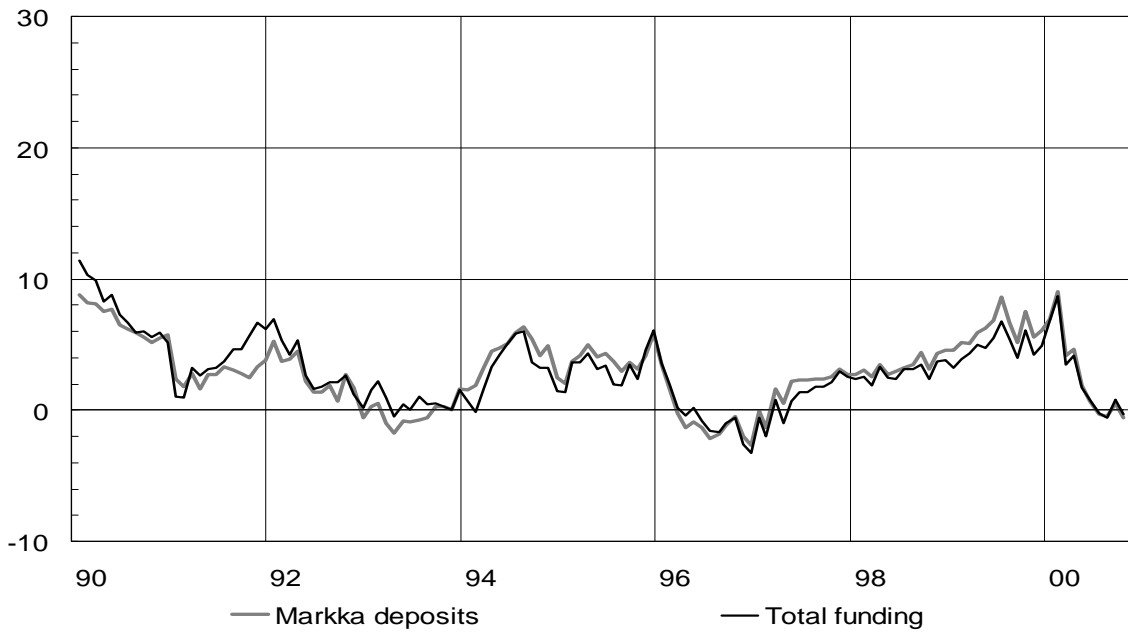


Latest observation Oct 2000

Chart 36.

BANK FUNDING FROM THE PUBLIC

12-month change, %

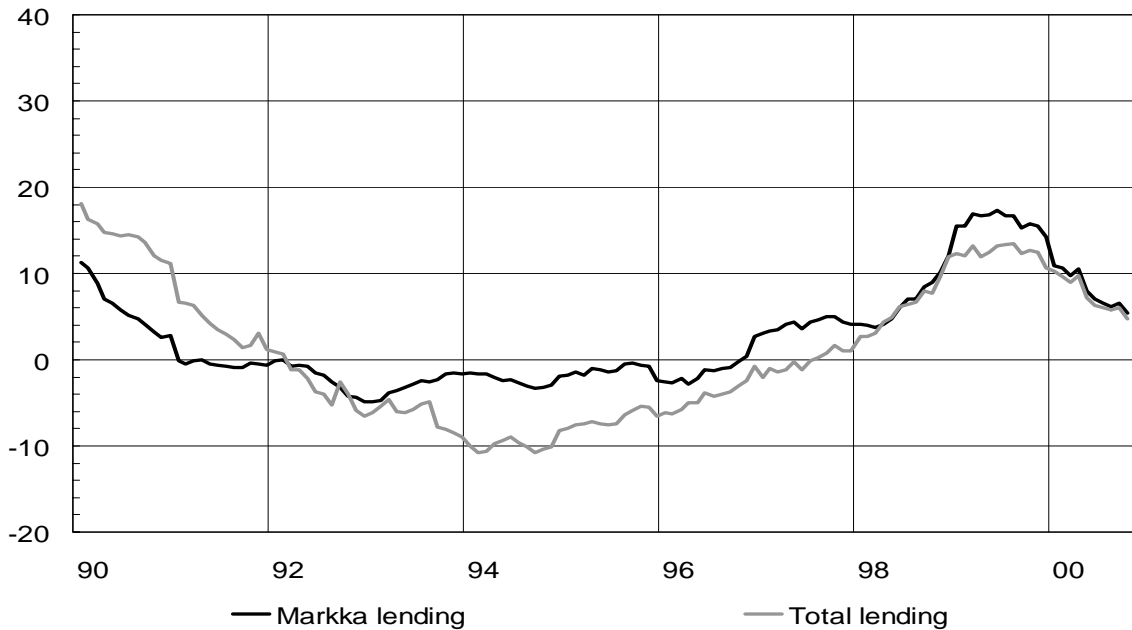


Latest observation Oct 2000

Chart 37.

BANK LENDING TO THE PUBLIC

12-month change, %



Latest observation Oct 2000

Chart 38.

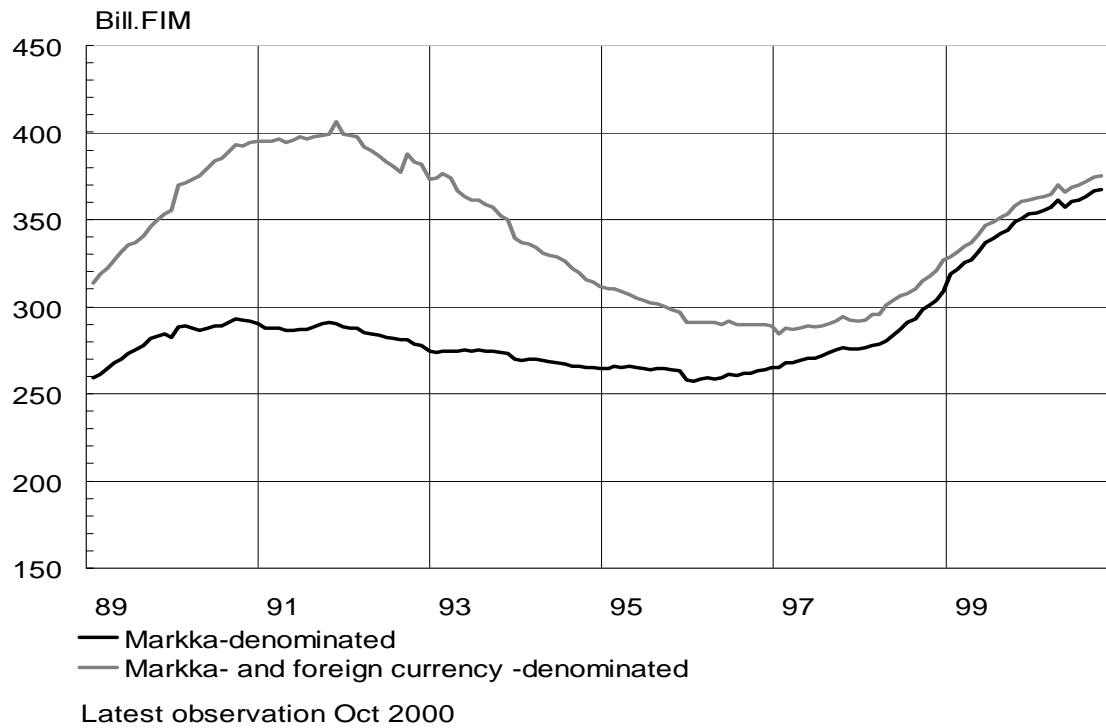
OUTSTANDING BANK CREDIT

Chart 39.

HEX, HELSINKI EXCHANGES
Share indices by sector

Hex-index 28.12.1990 = 1000

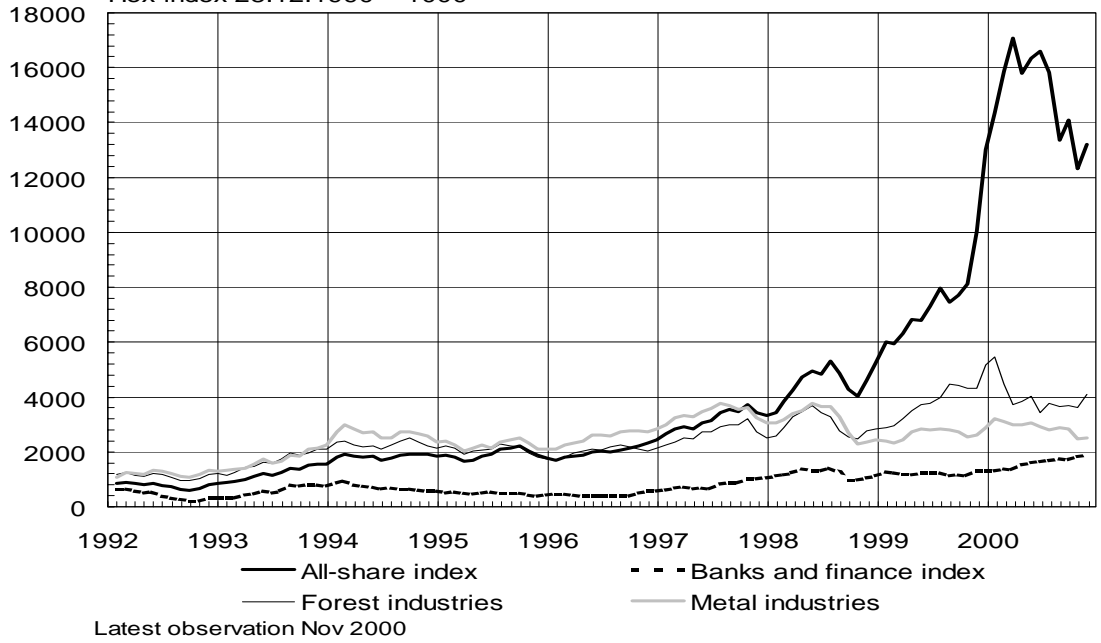
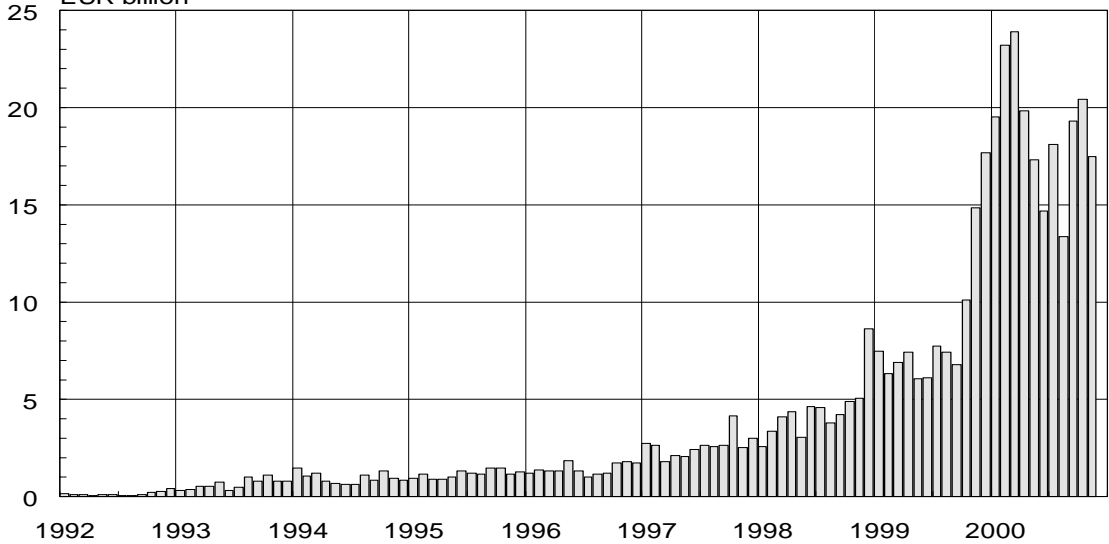


Chart 40.

HEX HELSINKI EXCHANGES
Share turnover

EUR billion



Latest observation Nov 2000

Chart 41.
HEX, HELSINKI EXCHANGES
Market Value

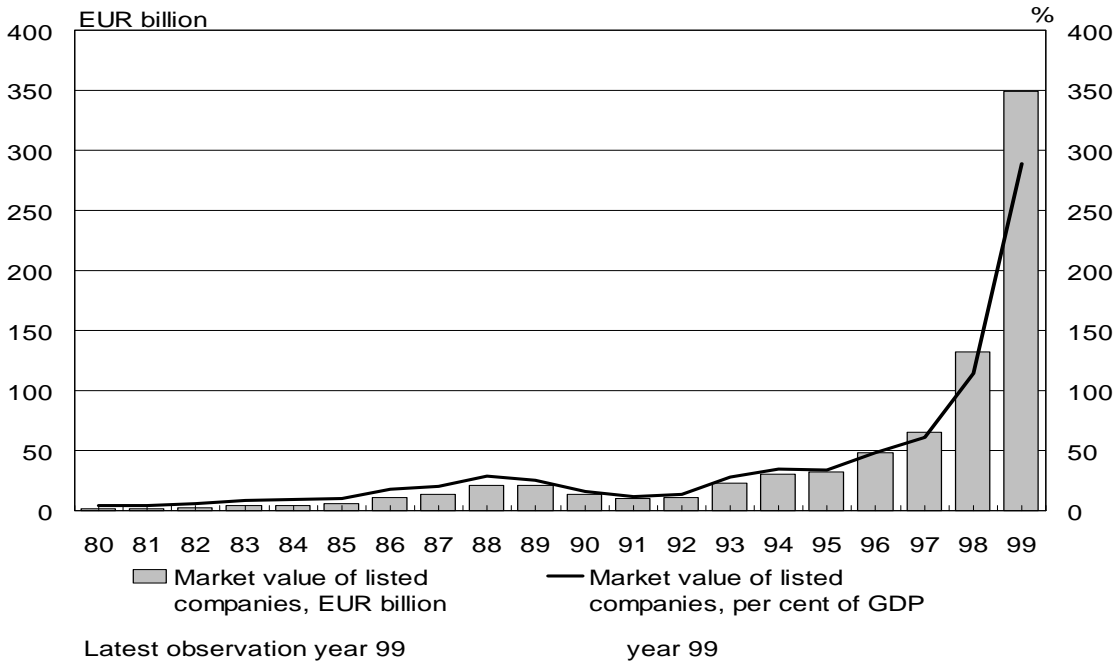
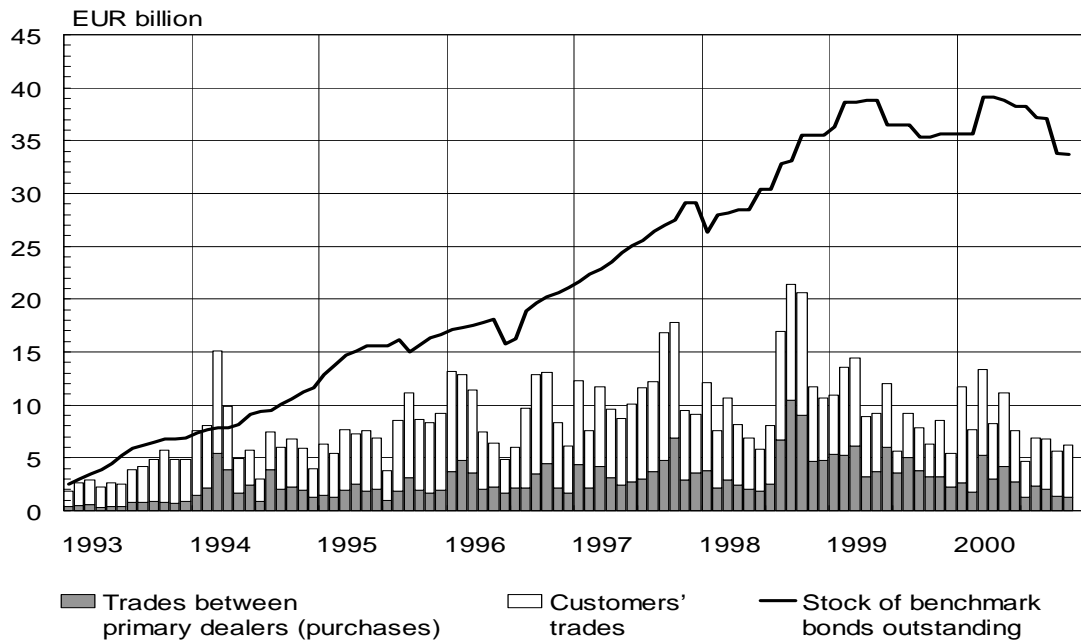
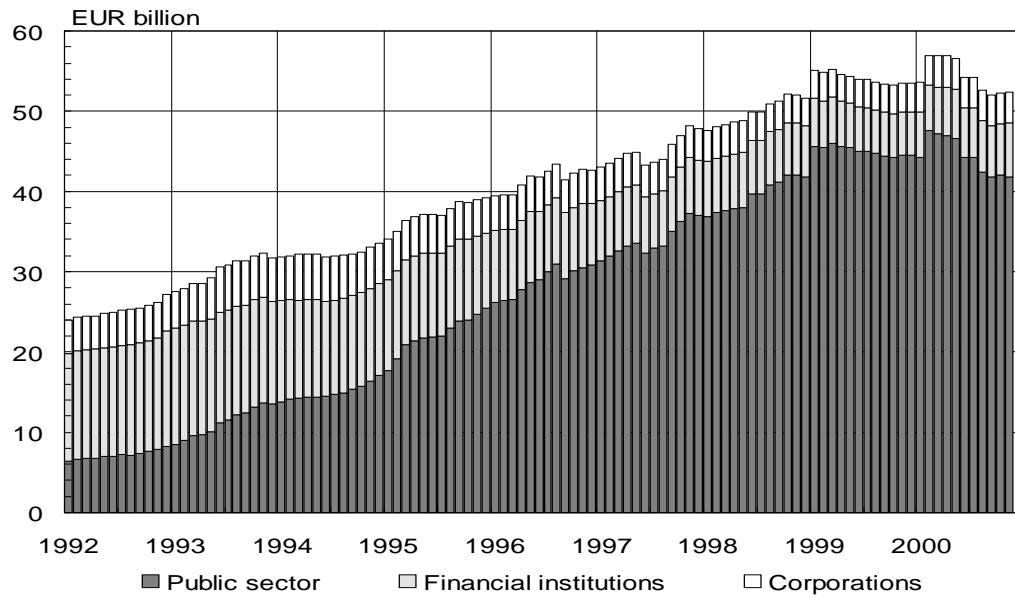


Chart 42.
GOVERNMENT BENCHMARK BONDS



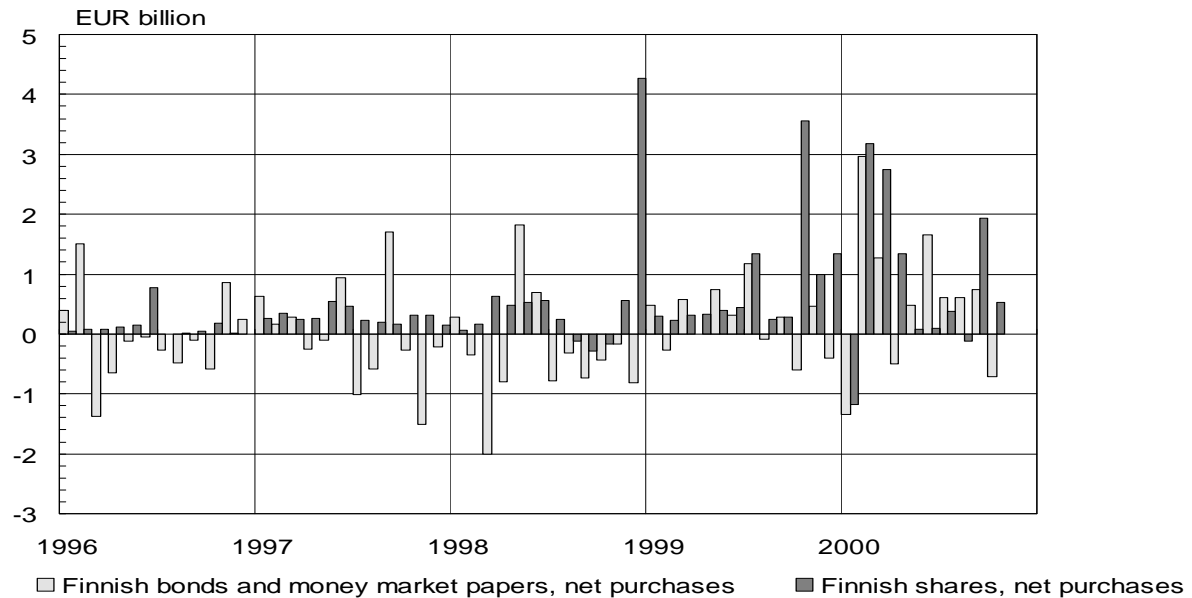
Latest observation Nov 2000

Chart 43.

STOCK OF BONDS OUTSTANDING IN FINLAND

Latest observation Nov 2000

Chart 44.

FOREIGN PORTFOLIO INVESTMENTS IN FINLAND

Latest observation Oct 2000

TABLE 5**Key figures for the Finnish deposit banks, billions of FIM***

All deposit banks	1992	1993	1994	1995	1996*	1997*	1998*	1999*	
Income from financial operations	10.7	13.0	13.7	12.4	11.0	11.7	13.5	13.5	
Other income	9.5	9.7	8.6	8.2	10.2	10.2	8.4	8.2	
Total income	20.2	22.7	22.3	20.6	21.2	21.9	21.9	21.7	
Expenses	14.9	15.3	16.4	15.5	12.8	12.0	11.4	11.5	
- pensionfund surplus refunded					1.2	1.5	0.6		
Depreciation	1.9	1.9	1.5	1.7	2.1	2.5	1.3	1.2	
Profit before credit and guarantee losses	3.4	5.5	4.4	3.4	7.5	8.9	9.2	9.0	
Credit and guarantee losses	14.0	14.7	11.2	6.2	3.7	2.4	1.8	0.5	
Profit before extraordinary items, appropriations and taxes	-10.6	-9.2	-6.8	-2.8	3.8	6.5	7.3	8.5	
Total assets	688.9	726.8	667.8	616.6	578.2	608.4	643.4	701.0	
Non-performing assets, net		35.9	25.4	19.6	12.3	8.3	5.5	4.8	
Capital adequacy, %	10.7	10.7	11.7	12.0	11.4	11.6	11.5	11.7	
	1992	1993	1994	1995	1996	1997	1998	1999	Oct 2000
Markka deposits of the public	264.6	268.8	275.4	291.4	283.7	291.1	304.7	323.2	316.6
- 12-month percentage change	-0.5	1.6	2.5	5.8	-2.7	2.6	4.6	6.1	-0.6
Markka lending to the public	274.4	269.8	264.7	258.0	265.0	275.7	309.1	353.1	367.1
- 12-month percentage change	-4.9	-1.7	-1.9	-2.5	2.7	4.0	12.1	14.2	5.4
Lending to the public (total)	373.2	339.6	311.8	291.5	289.1	292.0	326.8	361.6	374.9
- 12-month percentage change	-6.5	-9.0	-8.2	-6.5	-0.7	1.0	11.9	10.6	4.8

* groups consolidated

* For 1996 and 1997, the figures for the new cooperative banks group are used, previously separate figures for the OKO group and cooperative banks

* For 1998, the figures of Merita Pankki Oyj are used, previously figures for the Merita Oyj