

19 September 2000

No 9/2000

# Main Indicators for the Finnish Economy

## Charts and tables

	page	
Supply, demand and labour market		
Chart 1.1	GDP: Finland and EU countries	1
Chart 1.2	GDP: quarterly and monthly indicator	1
Chart 2	GDP by sectors of origin	2
Chart 3	Manufacturing production: Finland and EU countries	2
Chart 4	Main demand components	3
Chart 5	Household sector's saving ratio	3
Chart 6	Indicators of domestic demand	4
Chart 7	Labour force and employment	5
Chart 8	Unemployment rate: Finland and EU countries	5
Table 1	Supply, demand and labour market indicators	6
External balance and sectoral finance		
Chart 9	Exports of goods, volume	7
Chart 10	Imports of goods, volume	7
Chart 11	Foreign trade prices	8
Chart 12	External balance, trade account, current account	9
Chart 13	Sectoral Debt Ratios	9
Chart 14	Corporate sector borrowing	10
Chart 15	Household's borrowing	10
Chart 16	Central government finance	11
Chart 17	Foreign net debt, international comparison	12
Chart 18	Foreign net debt, per cent of GDP, per cent of exports	12
Table 2	External balance and sectoral finance indicators	13
Costs and prices		
Chart 19	Earnings	14
Chart 20	Relative unit labour costs in manufacturing	14
Chart 21	Producer price indices, Finland and EU countries	15
Chart 22	Consumer prices, Finland and EU countries	15
Chart 23	Import prices and producer prices	16
Chart 24	Harmonized consumer price index, Finland and Euro countries	16
Chart 25	Timber prices and export prices of forest industry products	17
Chart 26	Dwelling prices	17
Table 3	Cost and price indicators	18

## Money market and monetary policy

Chart 27	Trade-weighted competitiveness indicator	19
Chart 28	Exchange rates	19
Chart 29	Rates of interest set by eurosystem	20
Chart 30	Key interest rates	20
Chart 31	Short-term domestic and foreign interest rates	21
Chart 31.1	Long-term domestic and foreign interest rates	21
Chart 32	Real and nominal interest rates, 3-month	22
Chart 32.1	Real and nominal interest rates, government bond yields, 10 year	22
Chart 33	Yield curve	23
Table 4	Interest rates and exchange rates	24

## Financial market, securities market

Chart 34	Banks' markka lending rates and markka funding rates	25
Chart 35	Banks' interest rate margin	25
Chart 36	Bank funding from the public	26
Chart 37	Bank lending to the public	26
Chart 38	Outstanding bank credit	27
Chart 39	Hex, Helsinki Exchanges: share indices by sector	28
Chart 40	Hex, Helsinki Exchanges: share turnover	28
Chart 41	Hex, Helsinki Exchanges: market value	29
Chart 42	Government benchmark bonds	29
Chart 43	Stock of bonds outstanding in Finland	30
Chart 44	Foreign portfolio investments in Finland	30
Table 5	Key figures for the Finnish deposit banks	31

Chart 1.1

**GROSS DOMESTIC PRODUCT: FINLAND AND EU**

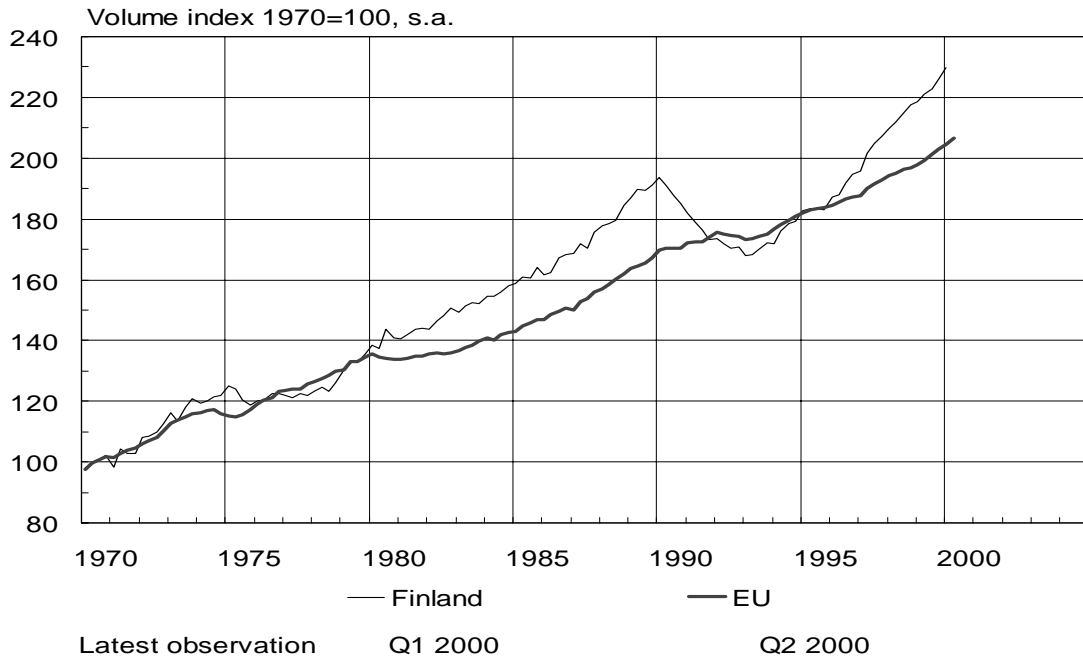


Chart 1.2

**GROSS DOMESTIC PRODUCT**

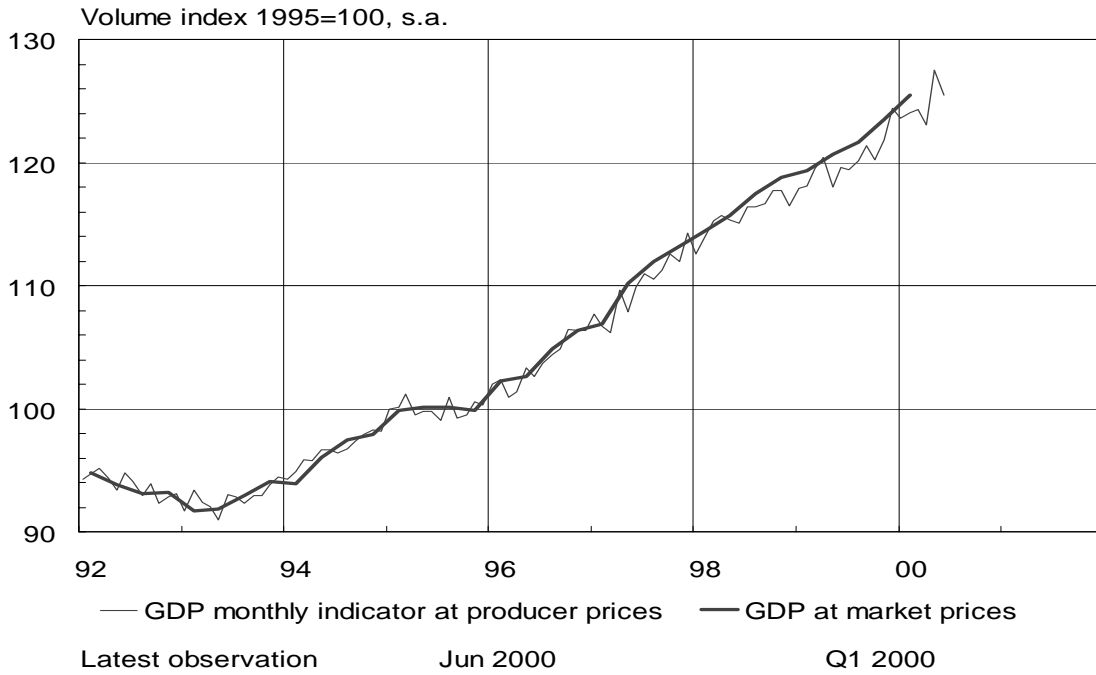


Chart 2.

**GDP<sup>1)</sup> BY SECTORS OF ORIGIN**

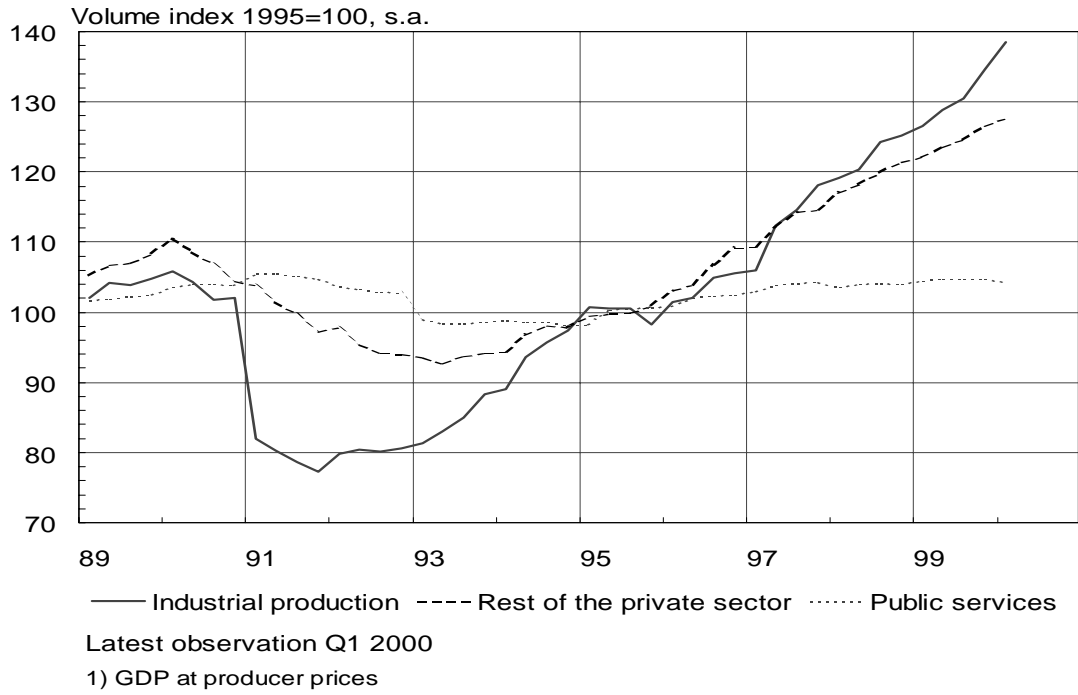


Chart 3.

**MANUFACTURING PRODUCTION**

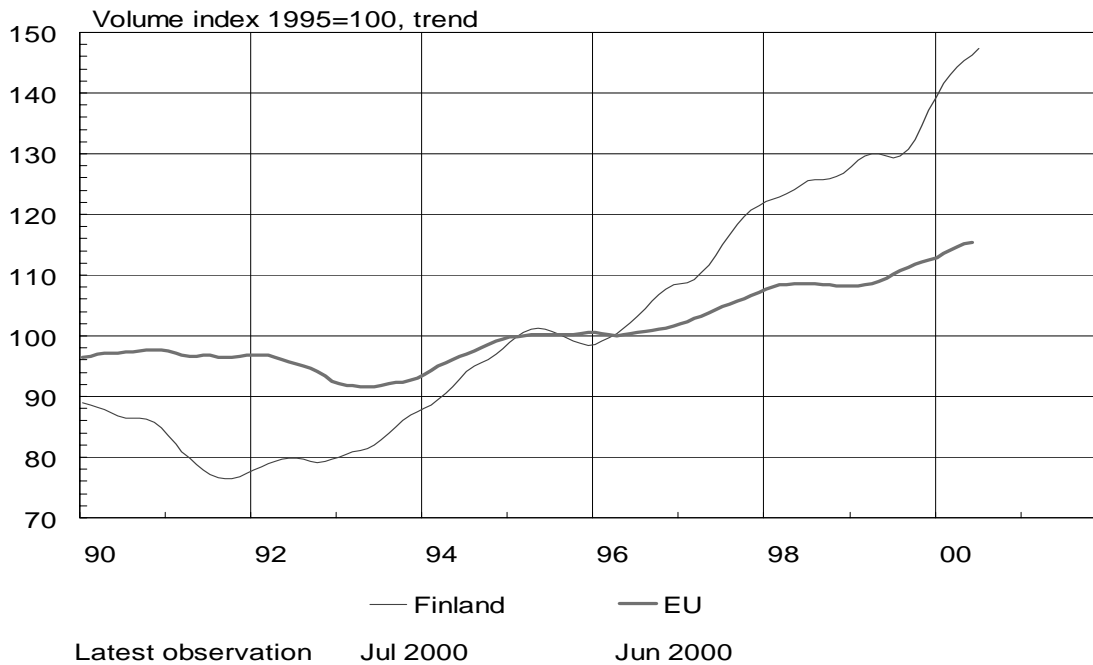


Chart 4.

**MAIN DEMAND COMPONENTS**

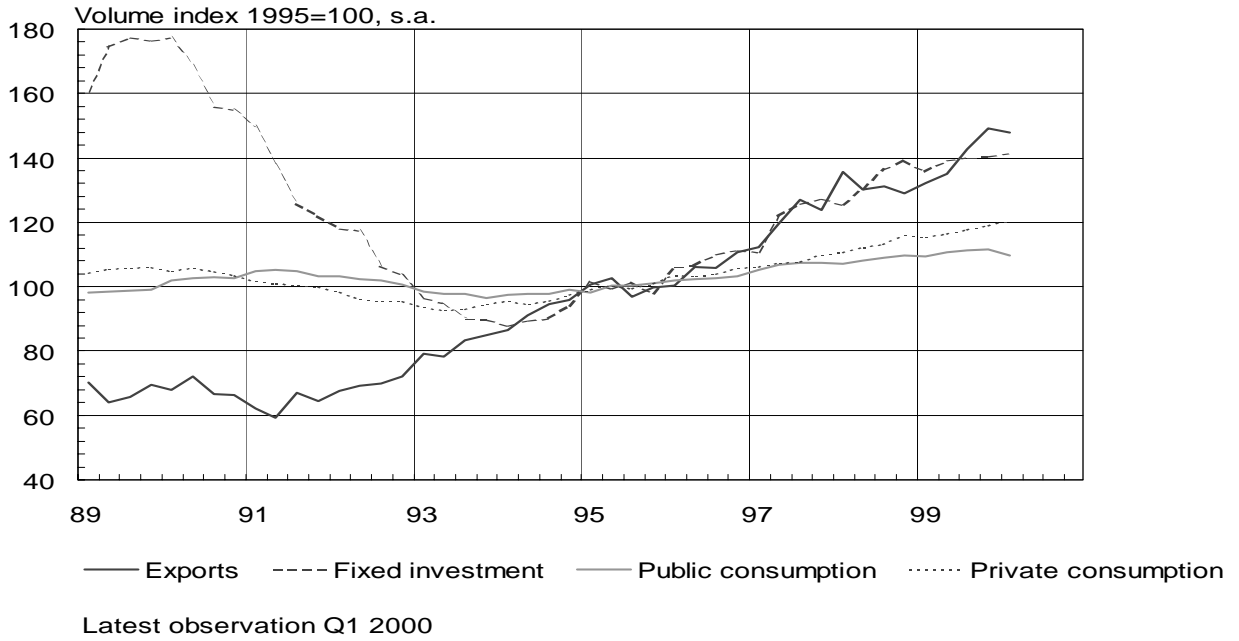


Chart 5.

**HOUSEHOLD SECTOR'S SAVING RATIO**

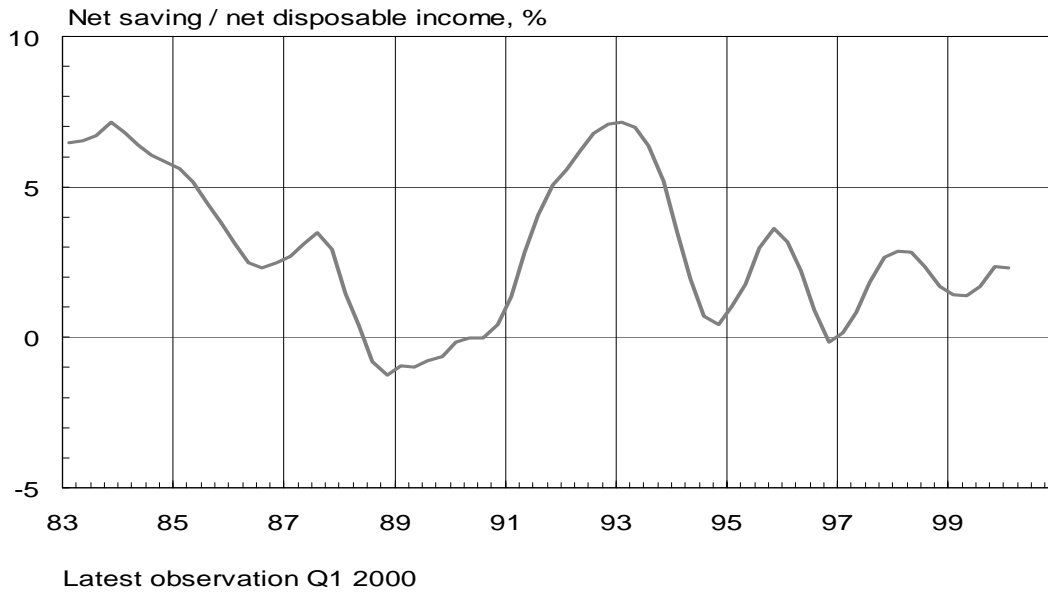


Chart 6.  
**INDICATORS OF DOMESTIC DEMAND**  
**Private consumption**



**Fixed investment**

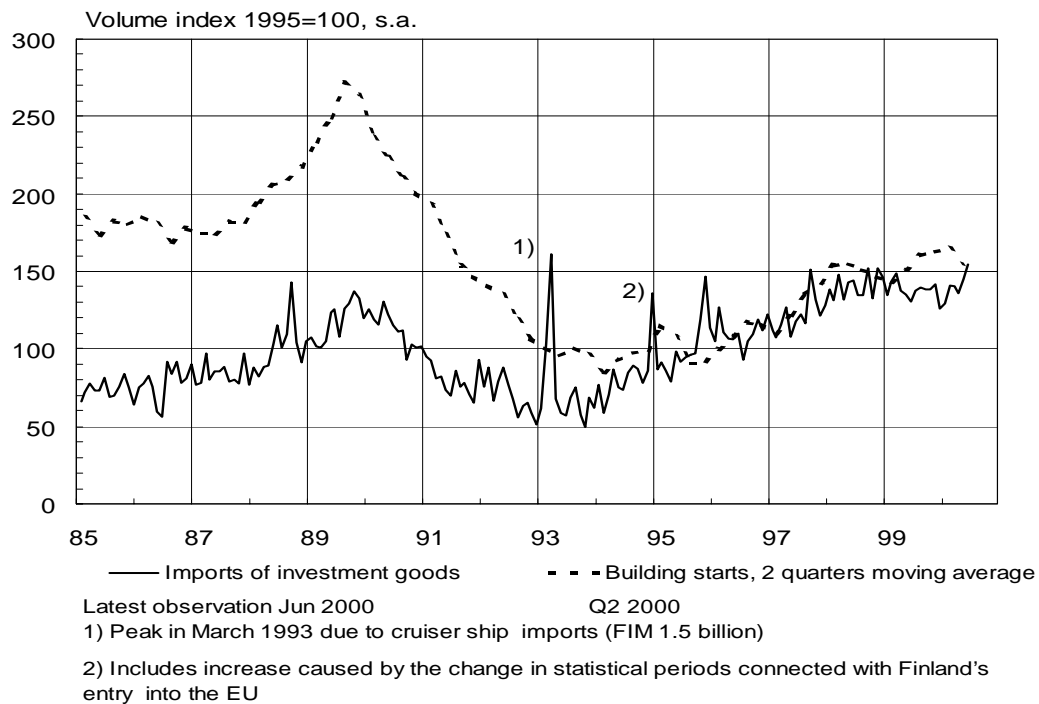
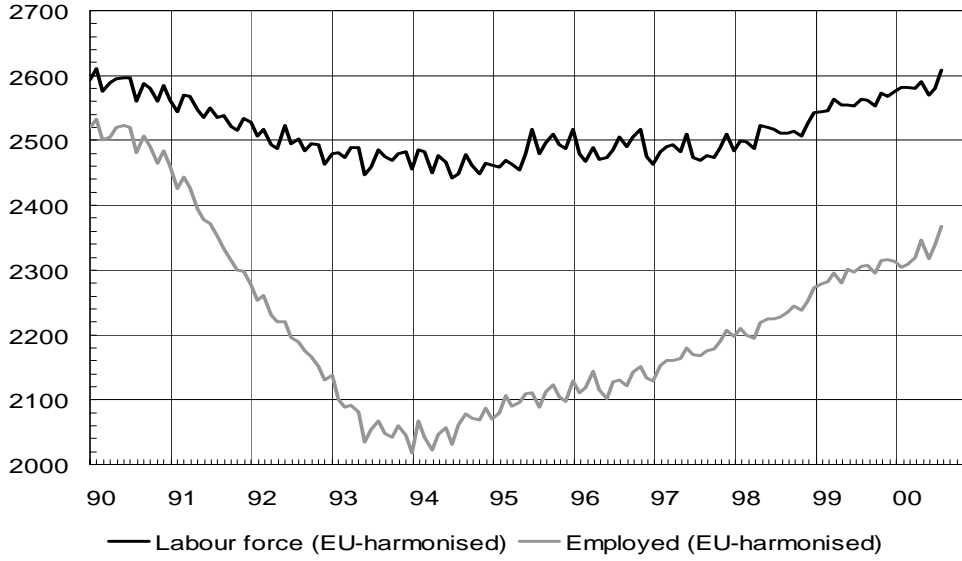


Chart 7.

**LABOUR FORCE AND EMPLOYMENT**

1000 persons, s.a.

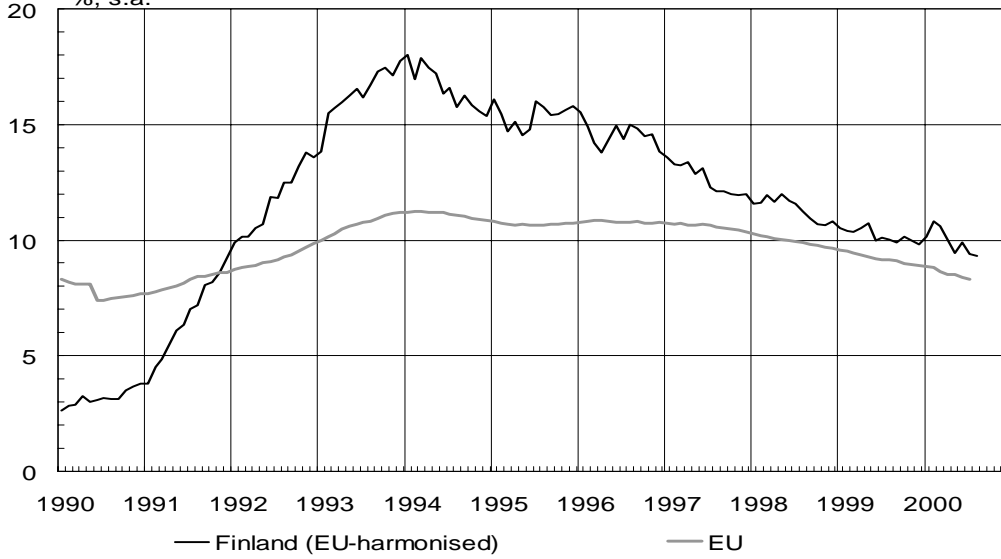


Latest observation Aug 2000

Chart 8.

**UNEMPLOYMENT RATE**

%, s.a.



Latest observation Aug 2000

Jul 2000



TABLE 1

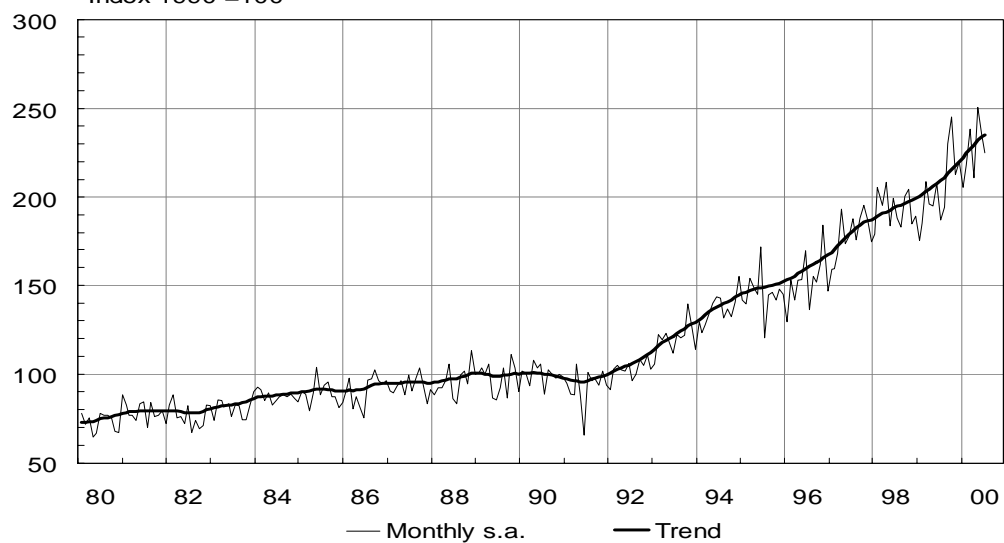
## Supply, demand and labour market indicators

	1997	1998	1999	2000	
	Volume change from previous year, per cent				
Gross domestic product 1) at market prices	6.3	5.5	4.0	5.2	Q1
GDP monthly indicator at producer prices	6.0	5.3	3.7	4.9 4.9	M06 M01-M06
Manufacturing production	10.0	9.3	5.7	12.8 9.7	M07 M01-M07
Consumption expenditure 1) private	3.7 3.5	3.9 4.9	3.1 3.6	3.1 4.4	Q1 Q1
government	4.1	1.7	2.0	0.0	Q1
Gross fixed capital formation 1) private	11.9 11.3	9.4 11.7	4.6 6.2	3.8 2.5	Q1 Q1
government	15.0	-1.4	-3.8	13.0	Q1
Domestic demand 1)	4.7	4.9	2.7	2.3	Q1
Exports of goods and services 1)	14.1	8.9	6.3	12.0	Q1
Imports of goods and services 1)	11.3	8.3	3.2	5.3	Q1
	Percentage change from previous year				
Employed persons 2)	2.0	2.4	3.3	2.8 1.6	M08 M01-M08
	Per cent				
Unemployment rate 2)	12.6	11.4	10.2	9.3 s.a. 10.0	M08 M01-M08

1) European System of Accounts 1995

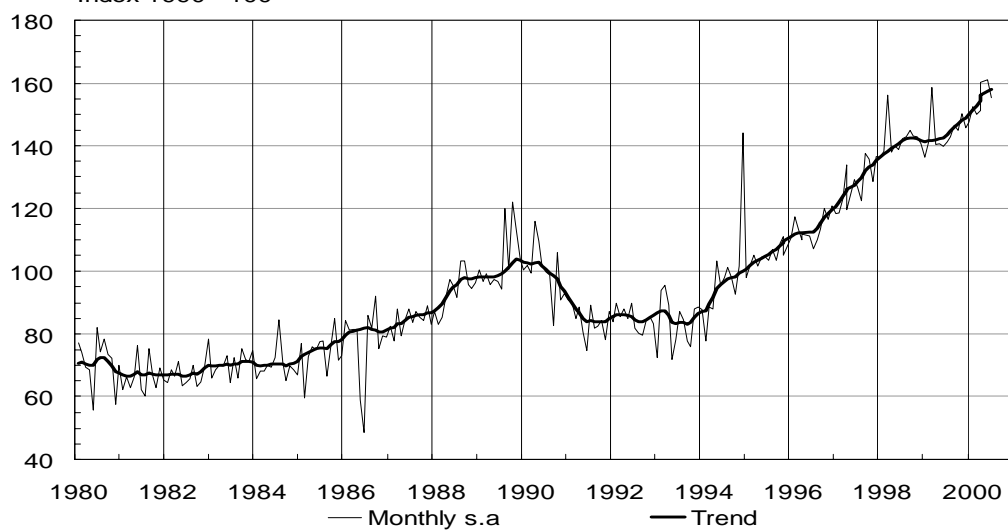
2) EU harmonized figures

Chart 9.  
**EXPORTS OF GOODS, volume**  
 Index 1990 =100



Latest observation Jul 2000

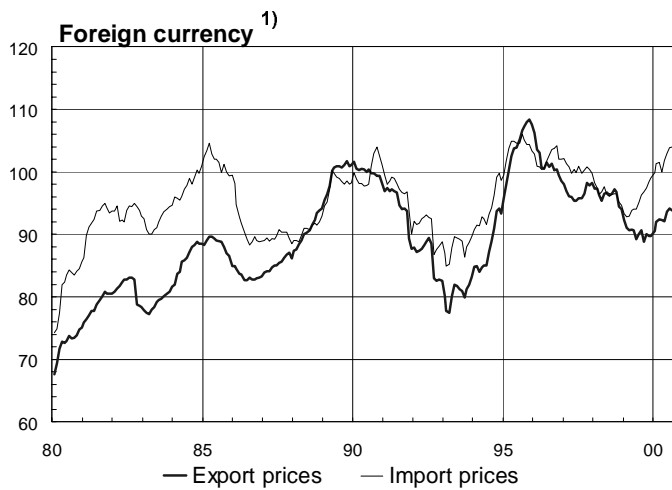
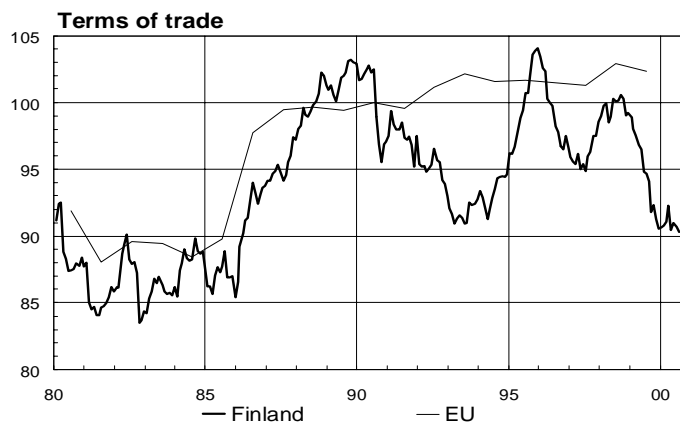
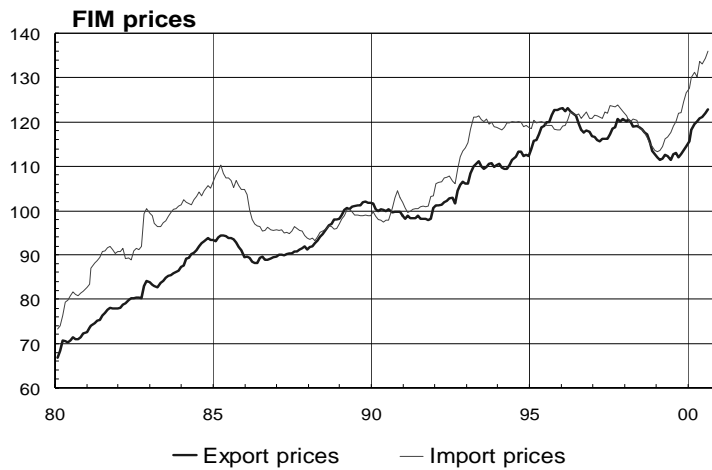
Chart 10.  
**IMPORTS OF GOODS, volume**  
 Index 1990 =100



Latest observation Jul 2000

The change in statistical periods caused by Finland's entry into the EU has not been taken into account in the seasonally-adjusted figures or in the trend for December 1994

Chart 11.  
**FOREIGN TRADE PRICES**  
 Index 1990 = 100



1) FIM prices have been deflated using the payments-weighted currency index.

Latest observation Aug 2000    Year 99 EU

Chart 12.  
**EXTERNAL BALANCE**  
 12-month moving totals

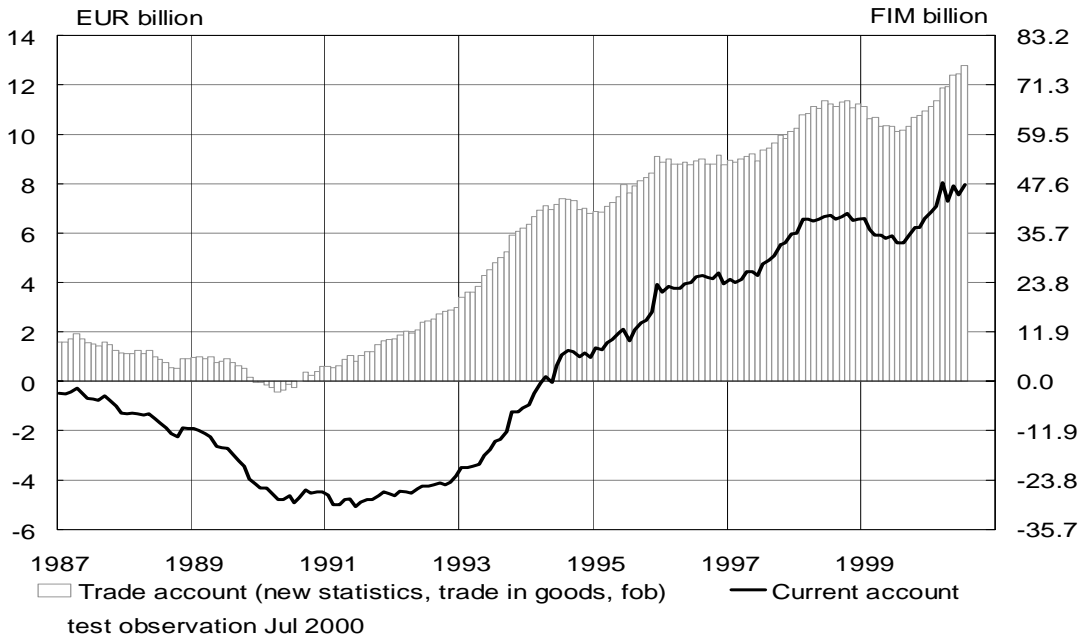


Chart 13.  
**SECTORAL DEBT RATIOS**

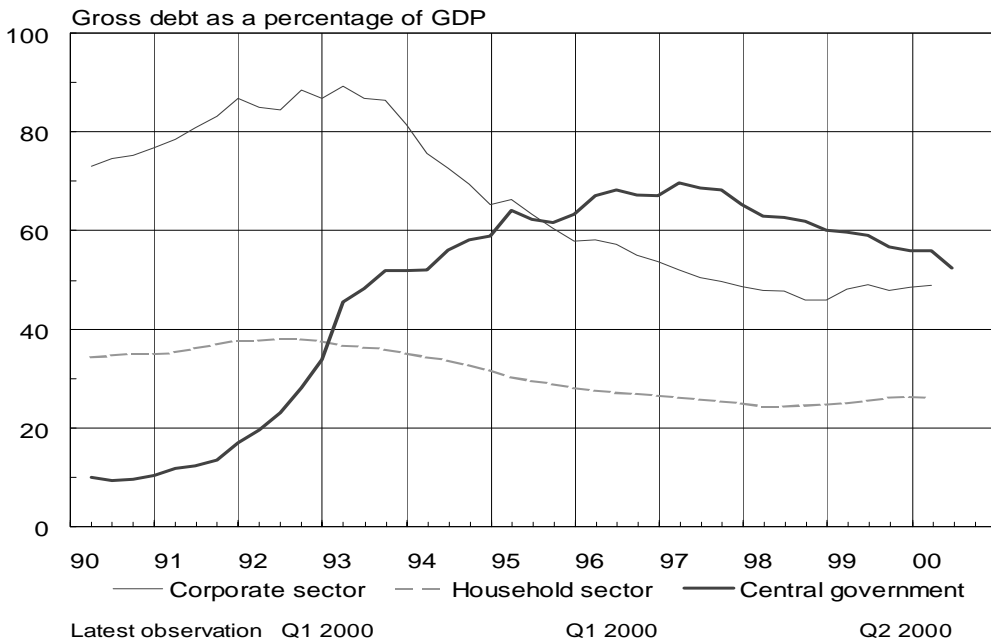


Chart 14.  
**CORPORATE SECTOR BORROWING**

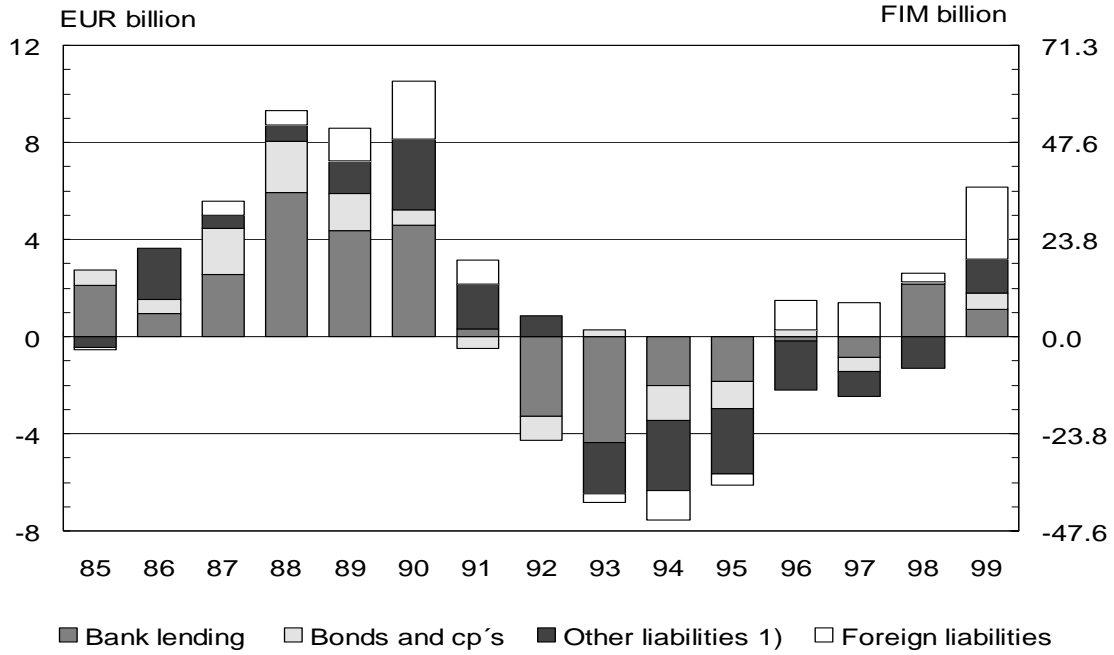
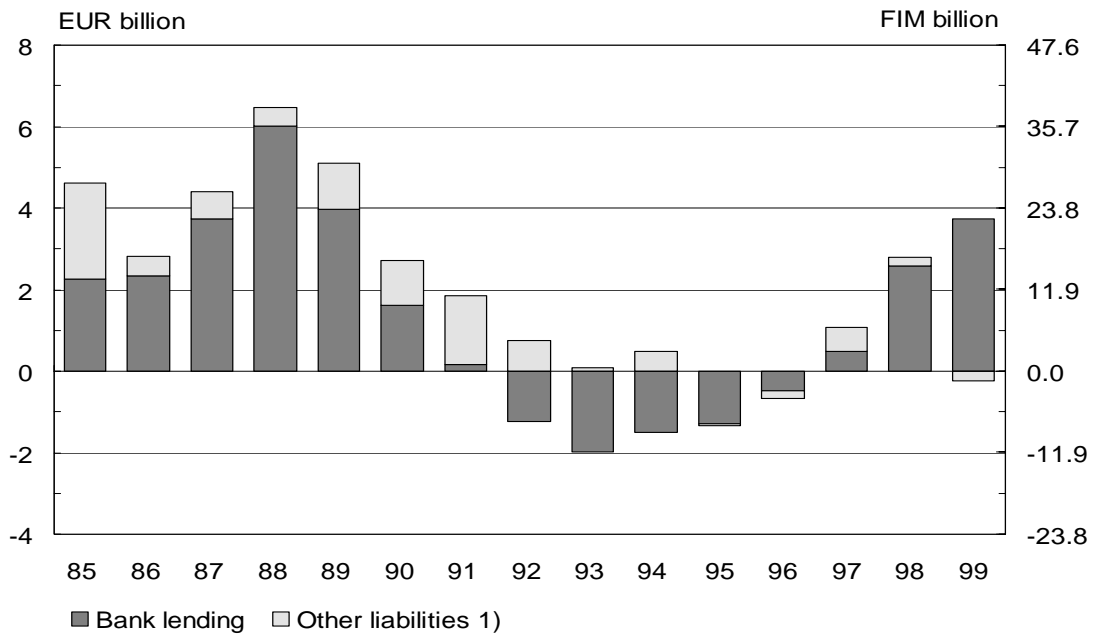


Chart 15.  
**HOUSEHOLDS' BORROWING**

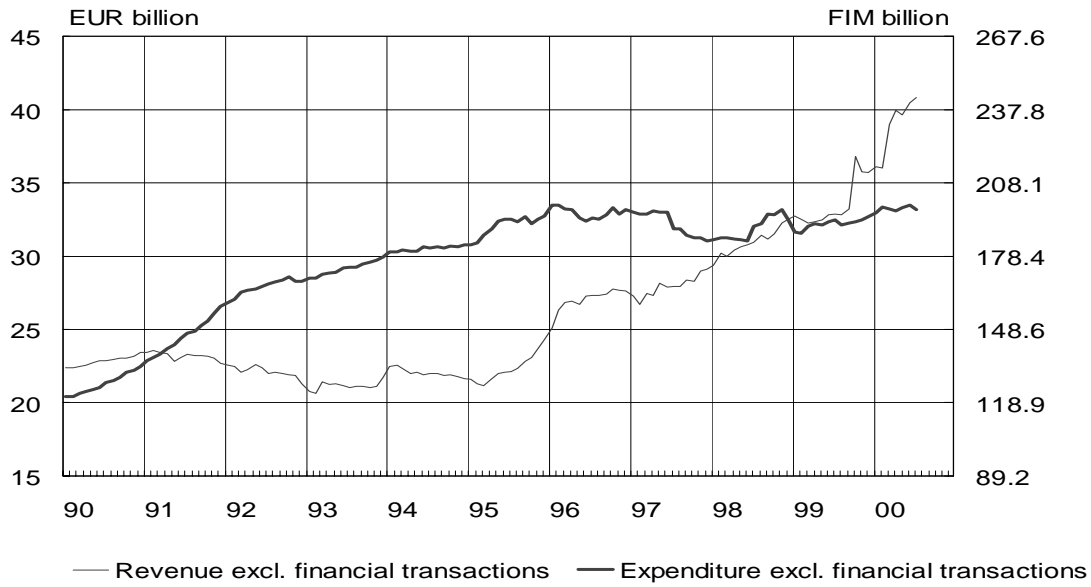


1) Due to a change (1996) in how the sectoral breakdown is made, there was a FIM 3.5 billion shift from households to the corporate sector.

Chart 16.

### CENTRAL GOVERNMENT FINANCES

12-month moving totals



Latest observation July 2000

Chart 17.

### NET INTERNATIONAL INVESTMENT POSITION, international comparison

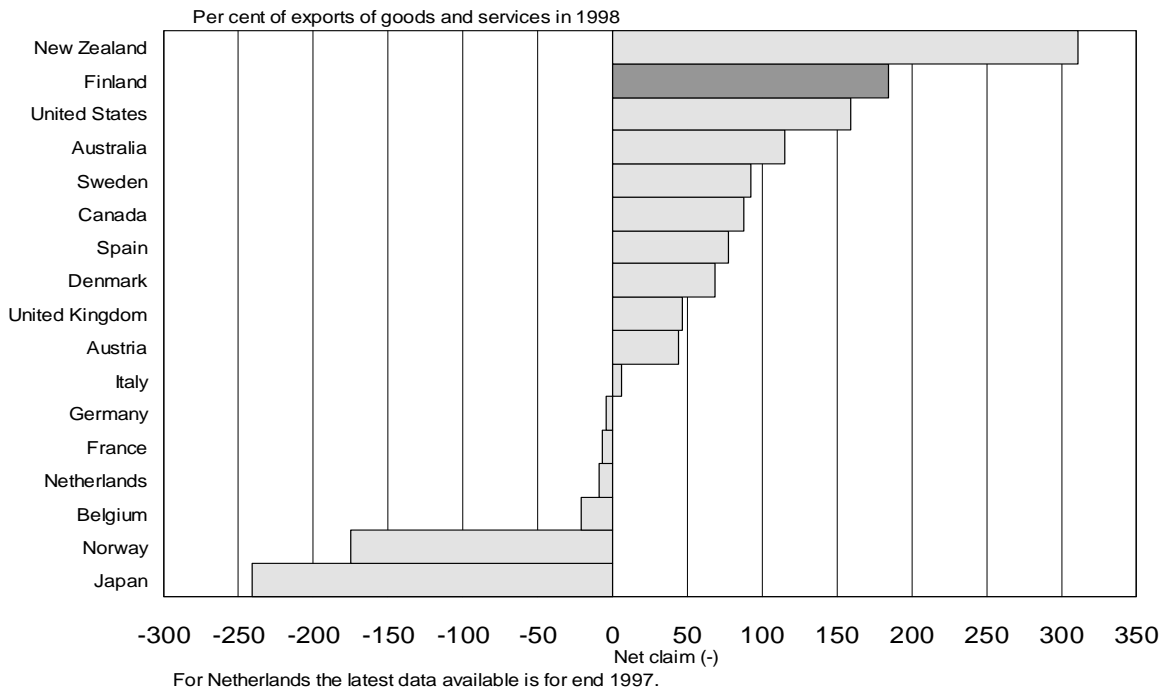


Chart 18.

### FINLAND'S NET INTERNATIONAL INVESTMENT POSITION

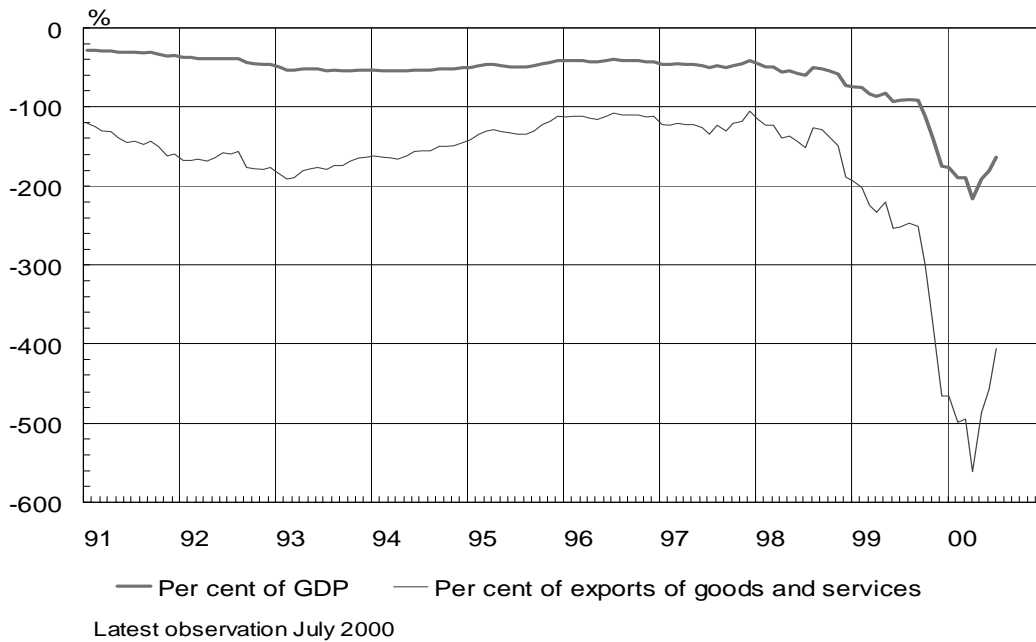


TABLE 2

## External balance and sectoral finance indicators

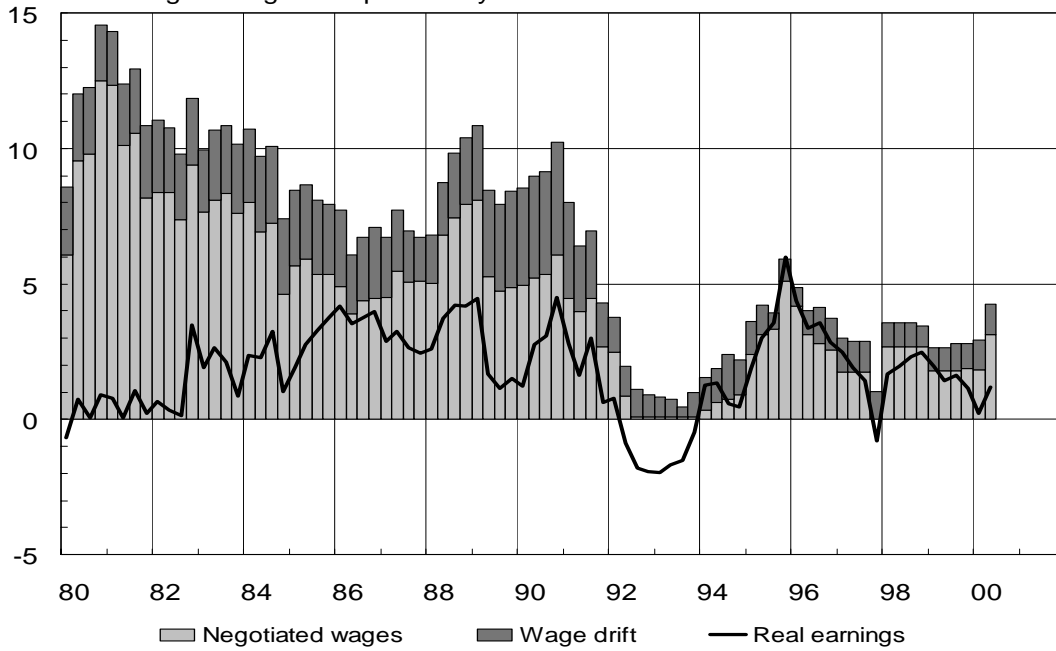
	1996	1997	1998	1999	2000
<b>Trade account</b>					
EUR billion	8.8	10.1	11.2	11.0	7.6 M01-M07 1.2 M07
per cent of GDP	8.9	9.5	9.7	9.0	
<b>Current account</b>					
EUR billion	4.0	6.0	6.6	6.6	3.8 M01-M07 1.0 M07
per cent of GDP	4.0	5.6	5.7	5.4	
<b>Capital account. EUR billion</b>	-6.3	-4.2	-6.4	-6.5	-3.4 M01-M07 -0.7 M07
General government	1.1	-1.0	-4.0	-4.4	-1.9 M01-M07 -0.2 M07
Direct investment					
to Finland	0.9	1.8	10.9	3.1	6.6 M01-M07 0.2 M07
abroad	2.8	4.6	16.8	4.3	7.4 M01-M07 -0.5 M07
Shares	0.9	2.0	5.0	5.5	1.0 M01-M07 0.1 M07
Other capital (incl. errors and omissions)	-6.5	-2.4	-1.5	-6.3	-1.7 M01-M07 -1.2 M07
Foreign exchange reserve (increase -)	2.4	-1.8	-0.2	-0.1	-0.3 M01-M07 -0.3 M07
<b>Net lending</b> (saving minus investment)					
Private sector					
EUR billion	7.1	7.6	5.1	4.3	
per cent of GDP	7.2	7.1	4.4	3.5	
General government					
EUR billion	-3.1	-1.6	1.5	2.3	
per cent of GDP	-3.2	-1.5	1.3	1.9	
Central government					
EUR billion	-7.1	-3.9	-1.7	-0.9	
per cent of GDP	-7.2	-3.7	-1.5	-0.8	
Local government					
EUR billion	0.8	-0.7	-0.4	-0.3	
per cent of GDP	0.8	-0.7	-0.3	-0.2	
Social security funds					
EUR billion	3.2	3.0	3.6	3.5	
per cent of GDP	3.3	2.8	3.1	2.9	
<b>Net foreign debt</b>					
per cent of GDP	41.9	41.0	73.2	174.7	
per cent of exports of goods and services	111.6	105.0	189.2	466.9	
<b>Sectoral debt ratios</b> (gross debt per cent of GDP)					
Non-financial corporate sector	48.6	43.6	41.3	43.7	
Household sector	42.0	39.7	38.9	40.0	
General government (EMU)	57.1	54.1	48.7	46.6	



Chart 19.

**EARNINGS**

Percentage change from previous year

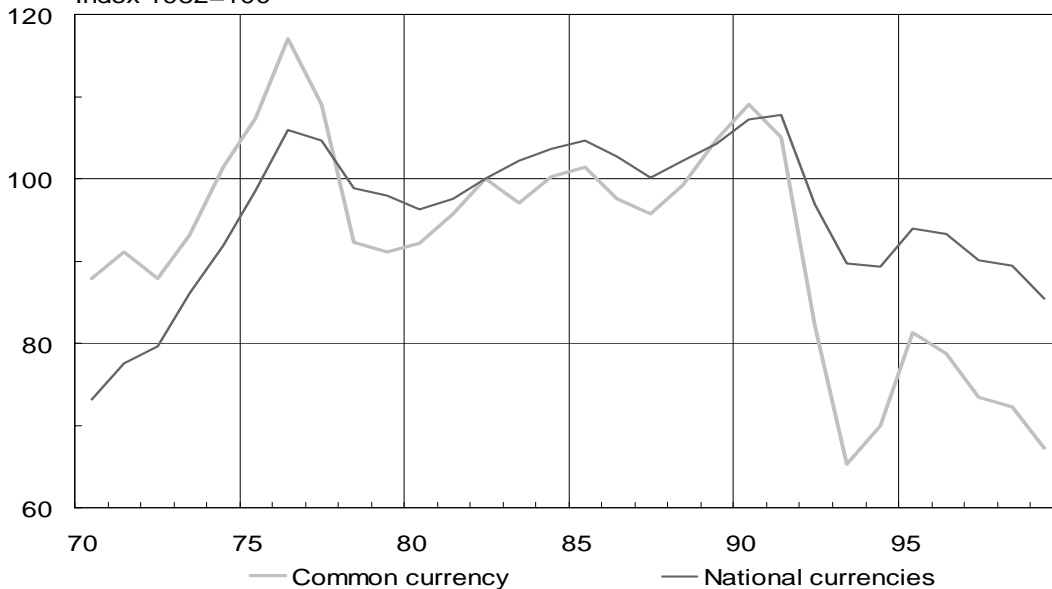


Latest observation Q2 2000

Chart 20.

**RELATIVE UNIT LABOUR COSTS IN MANUFACTURING**

Finland / competitor countries  
Index 1982=100



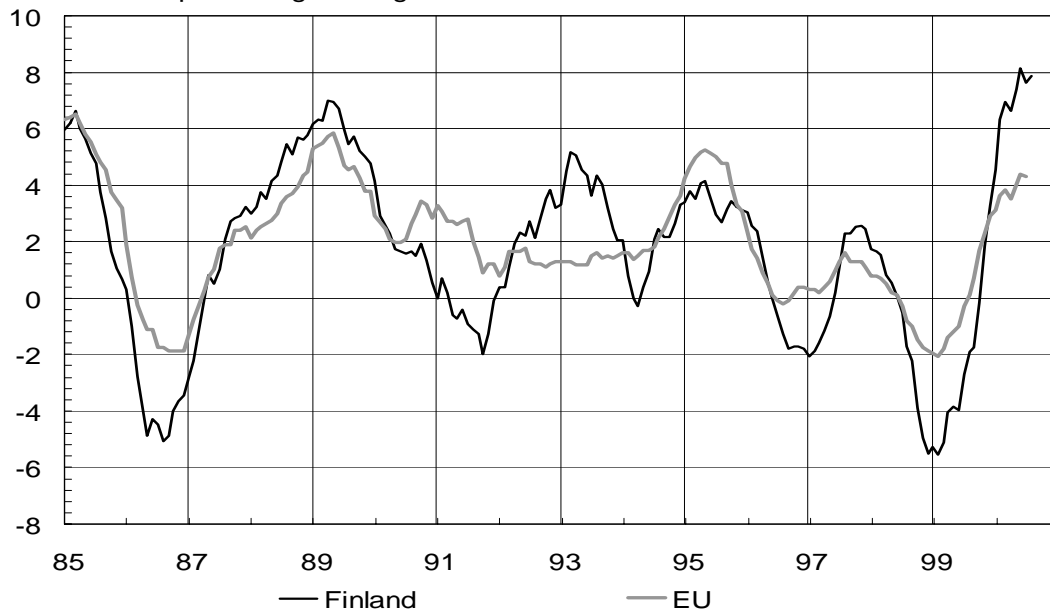
Latest observation year 1999

A fall indicates improvement in competitive position

Chart 21.

**PRODUCER PRICE INDICES**

12-month percentage change



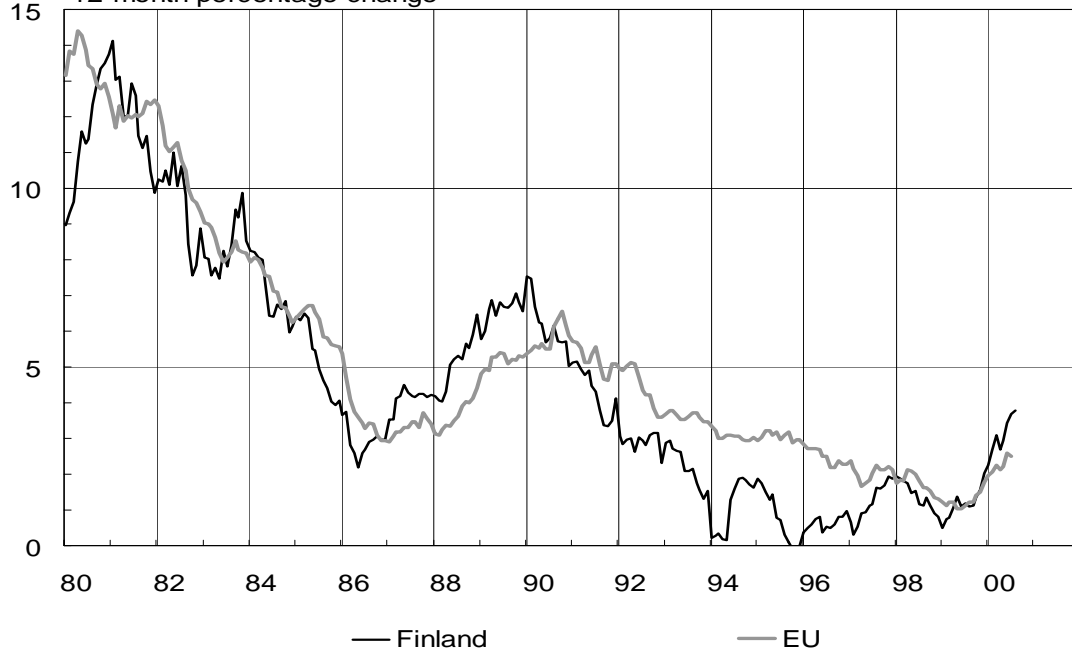
Latest observation Aug 2000

Jul 2000

Chart 22.

**CONSUMER PRICES**

12-month percentage change



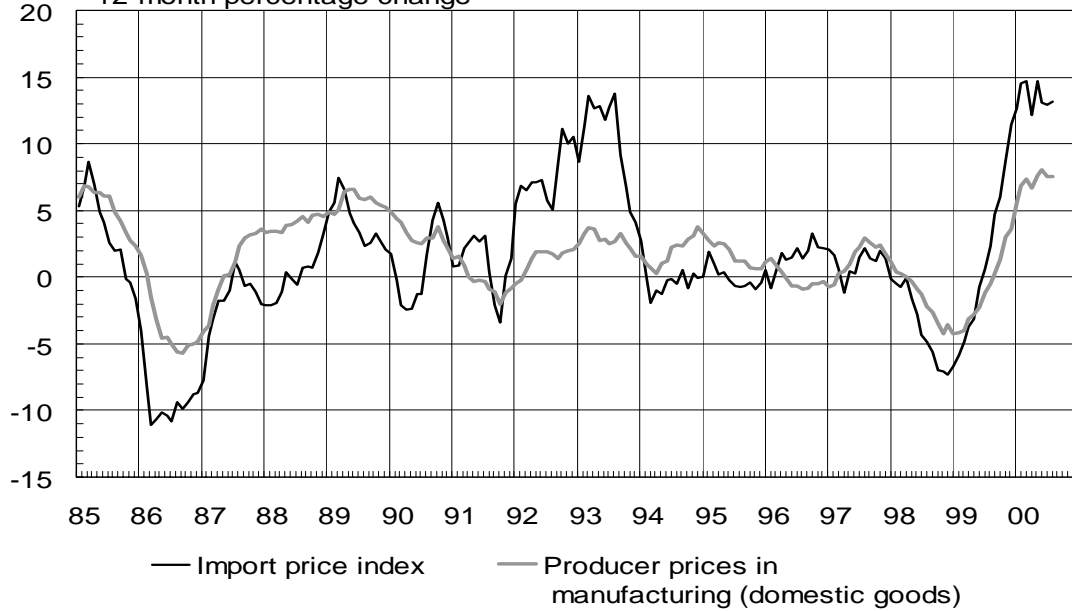
Latest observation Aug 2000

Jul 2000

Chart 23 .

**IMPORT PRICES AND PRODUCER PRICES**

12-month percentage change

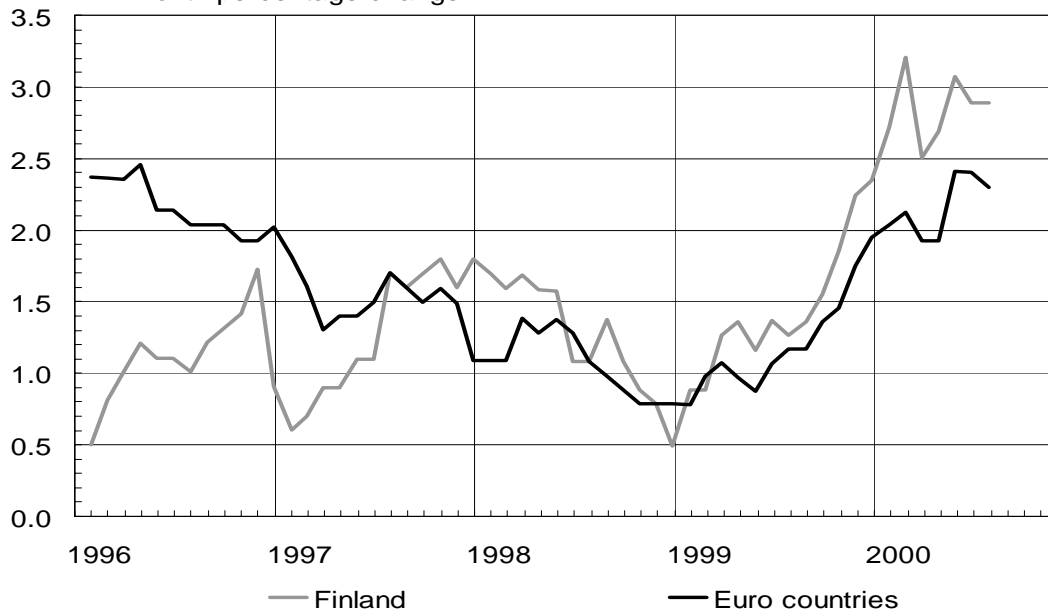


Latest observation Aug 2000

Chart 24.

**HARMONIZED CONSUMER PRICE INDEX**

12-month percentage change

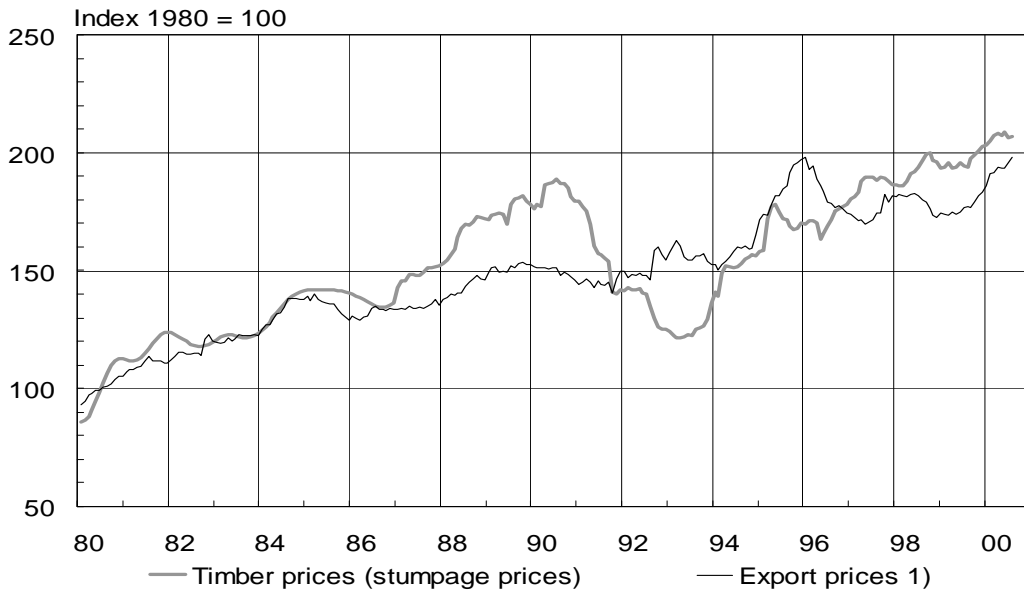


Latest observation Aug 2000

Aug 2000

Chart 25.

**TIMBER PRICES AND EXPORT PRICES OF FOREST INDUSTRY PRODUCTS**



Latest observation Aug 2000

1) Export price index of Statistics Finland from beginning of 1995

Chart 26.

**DWELLING PRICES**

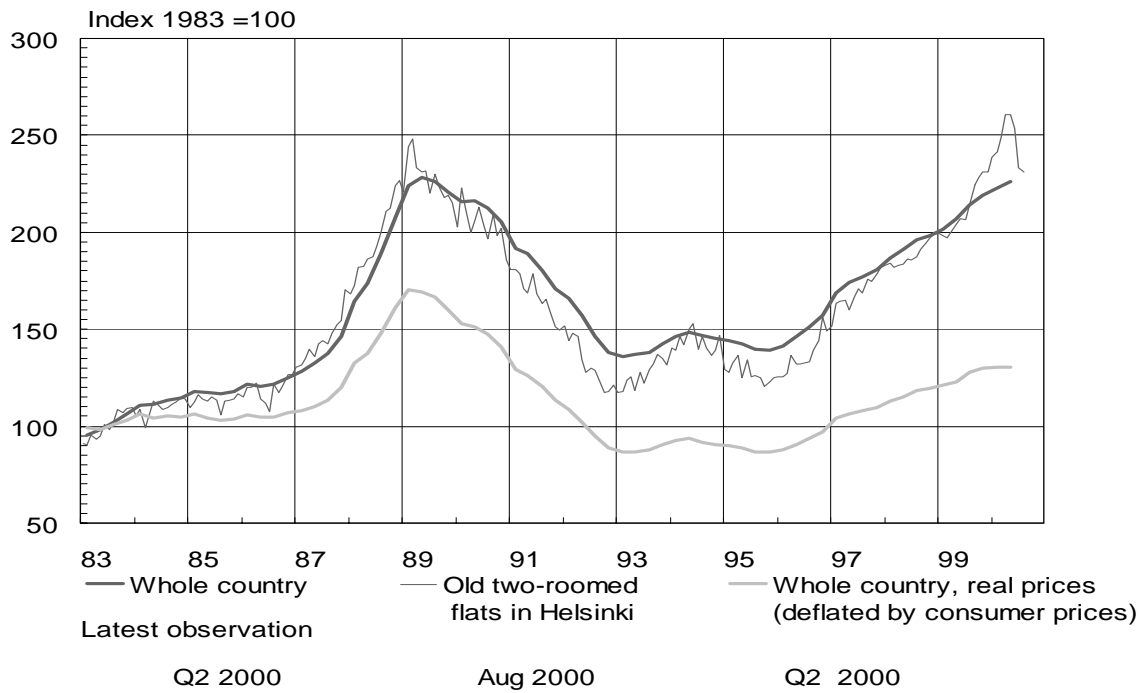


TABLE 3

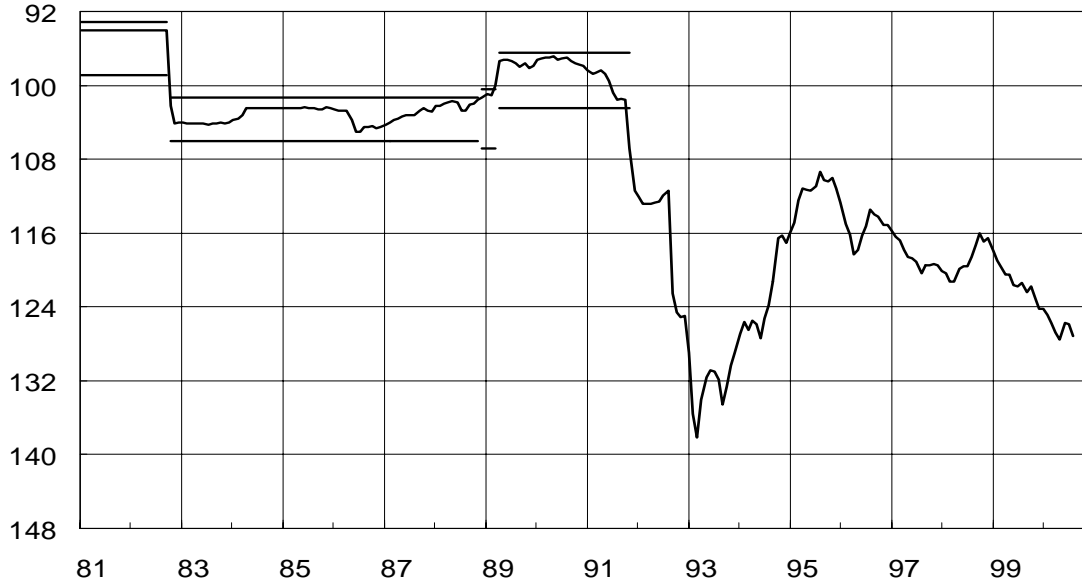
## Cost and price indicators, percentage change

	1998	1999	2000
<b>Labour costs</b>			
Index of wages and salaries	3.5	2.7	4.2 Q2
Unit labour costs			
Whole economy	1.9	2.2	..
Manufacturing	-1.0	0.6	..
<b>Price indices</b>			
Export prices	0.0	-4.4	8.6 M08 7.0 M01-M08
Import prices	-3.5	0.6	13.6 M08 13.5 M01-M08
Producer prices	-1.1	-2.5	7.6 M08 7.1 M01-M08
Wholesale prices	-1.5	-0.1	8.2 M08 7.9 M01-M08
Consumer prices	1.4	1.2	3.8 M08 3.1 M01-M08
Indicator of the underlying inflation	1.0	1.3	3.7 M07 3.2 M01-M07
<b>Asset prices</b>			
Stumpage prices	3.0	1.9	6.8 M08 6.4 M01-M08
Dwelling prices	10.2	8.9	9.4 Q2
Share prices	41.6	72.1	79.3 M08 129.3 M01-M08

Chart 27.

**TRADE-WEIGHTED COMPETITIVENESS INDICATOR  
(OLD BANK OF FINLAND CURRENCY INDEX)**

Index 1982=100



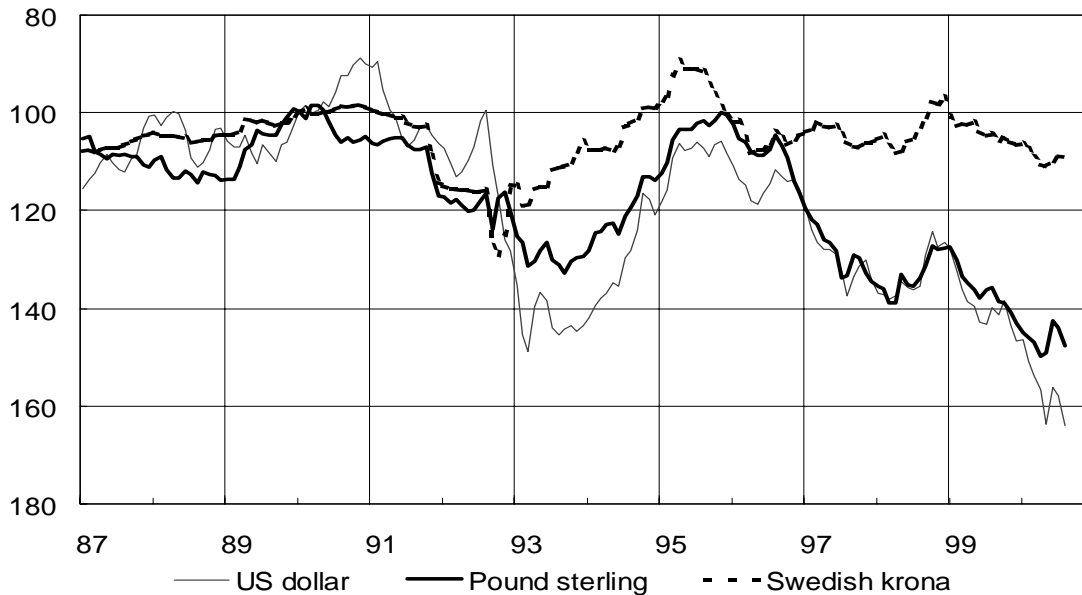
Latest observation Aug 2000

Chart 28.

**EXCHANGE RATES**

Rising curve=EURO strenghtens

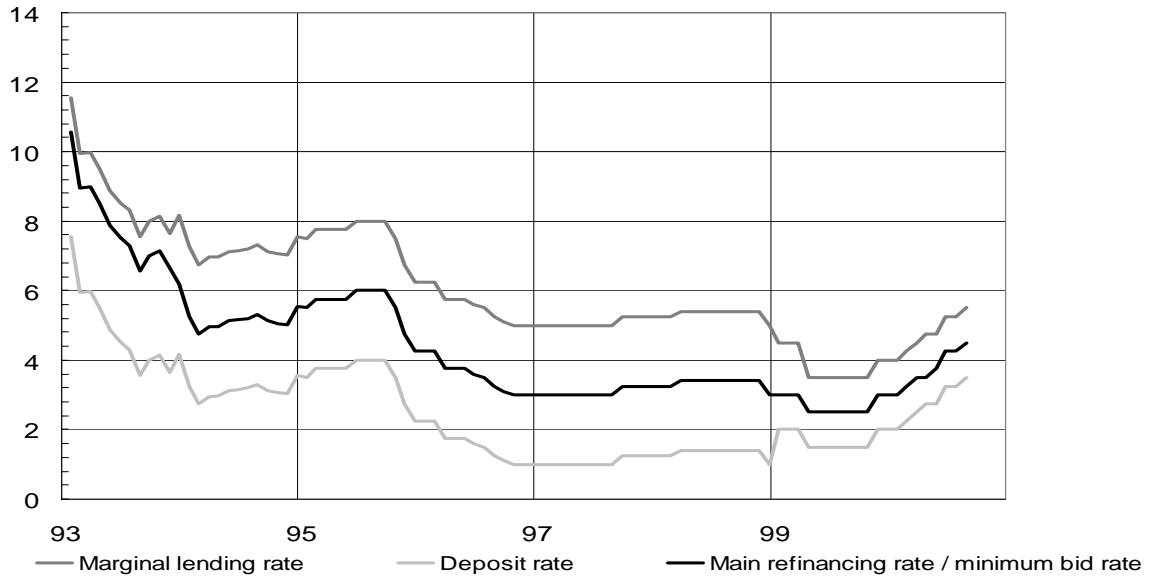
Monthly averages of selling rates in EURO, January 1990=100



Exchange rates until 31 Dec 1998 are based on corresponding Finnish markka rates converted into euro rates at the fixed conversion rate 5.94573.  
Latest observation Aug 2000

Chart 29.

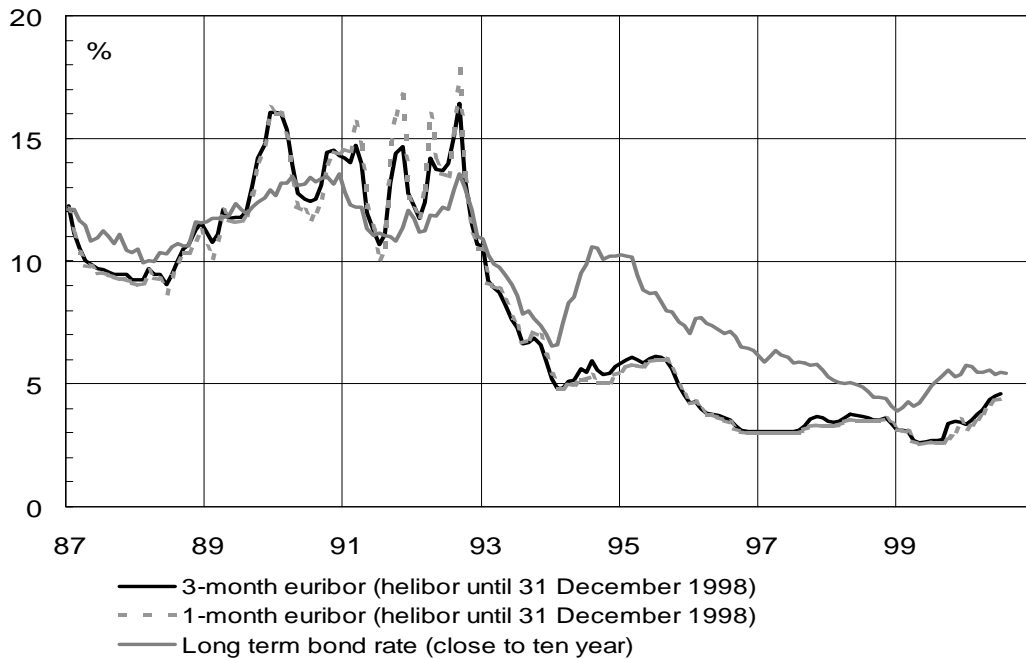
**RATES OF INTEREST SET BY EUROSYSTEM**



Until 31 Dec 1998 the corresponding rates set by the Bank of Finland.  
 Latest observation Aug 2000

Chart 30.

**KEY INTEREST RATES**



Latest observation July 2000

Chart 31.

**SHORT-TERM DOMESTIC AND FOREIGN INTEREST RATES**

3-month interest rates, %

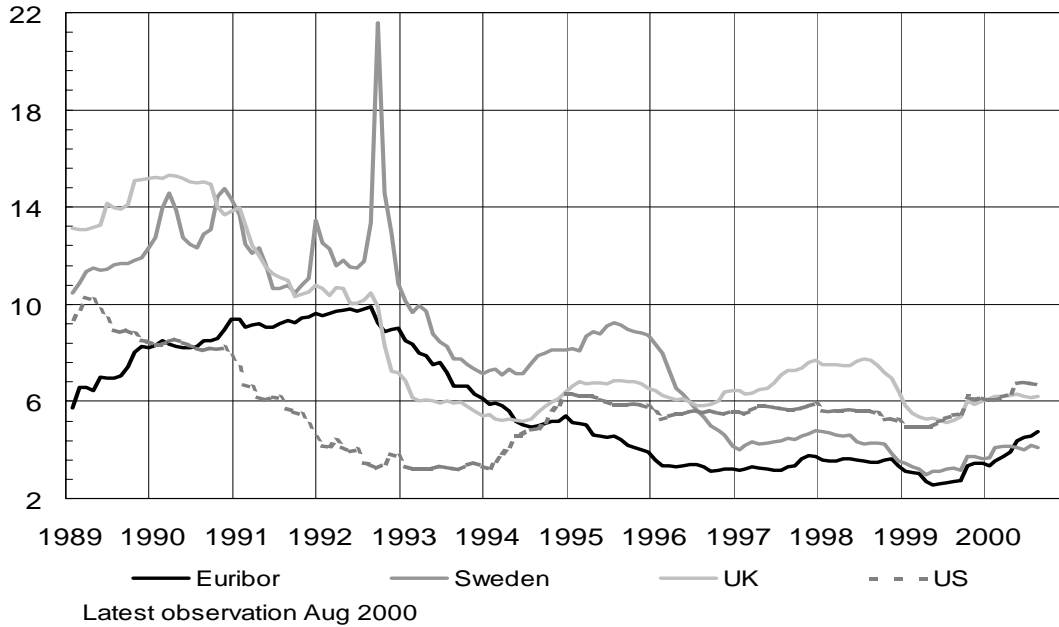


Chart 31.1.

**LONG-TERM DOMESTIC AND FOREIGN INTEREST RATES**

Government bond yields, close to 10 year, %

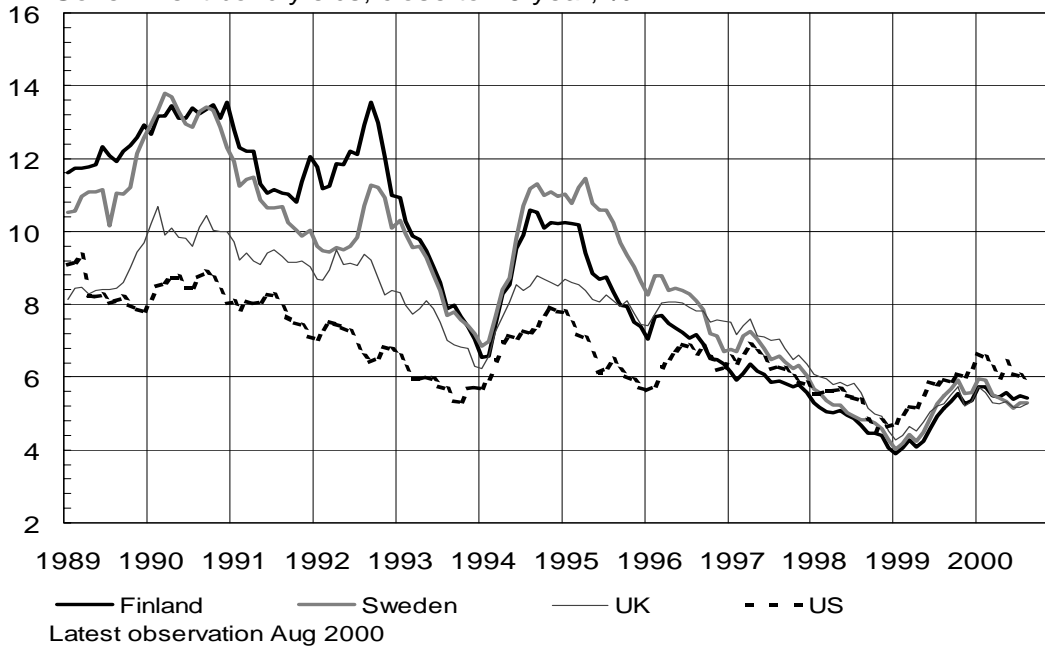
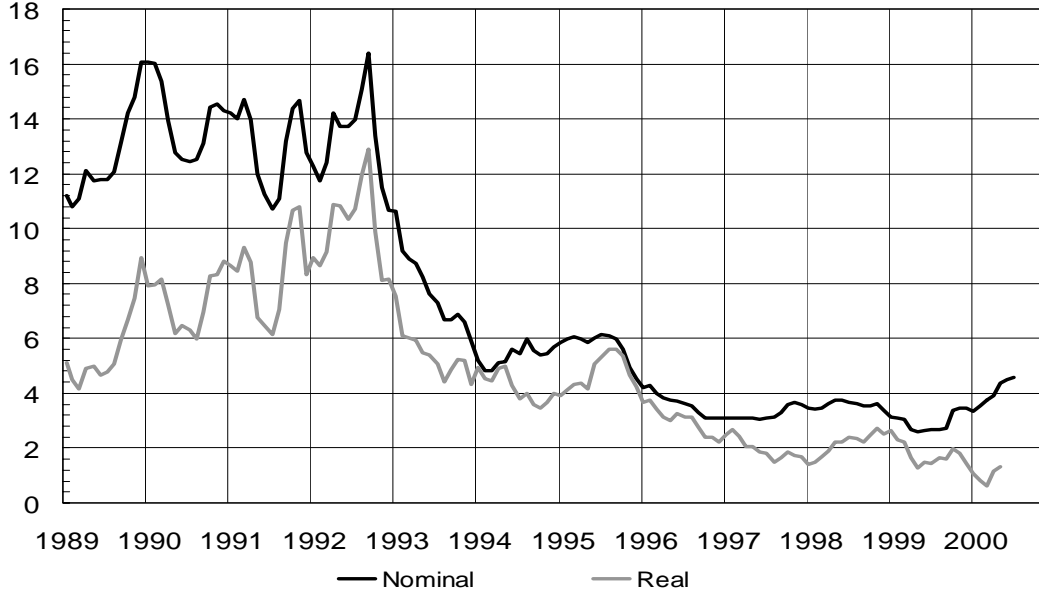




Chart 32.

**REAL AND NOMINAL INTEREST RATES**

3-month interest rates, %

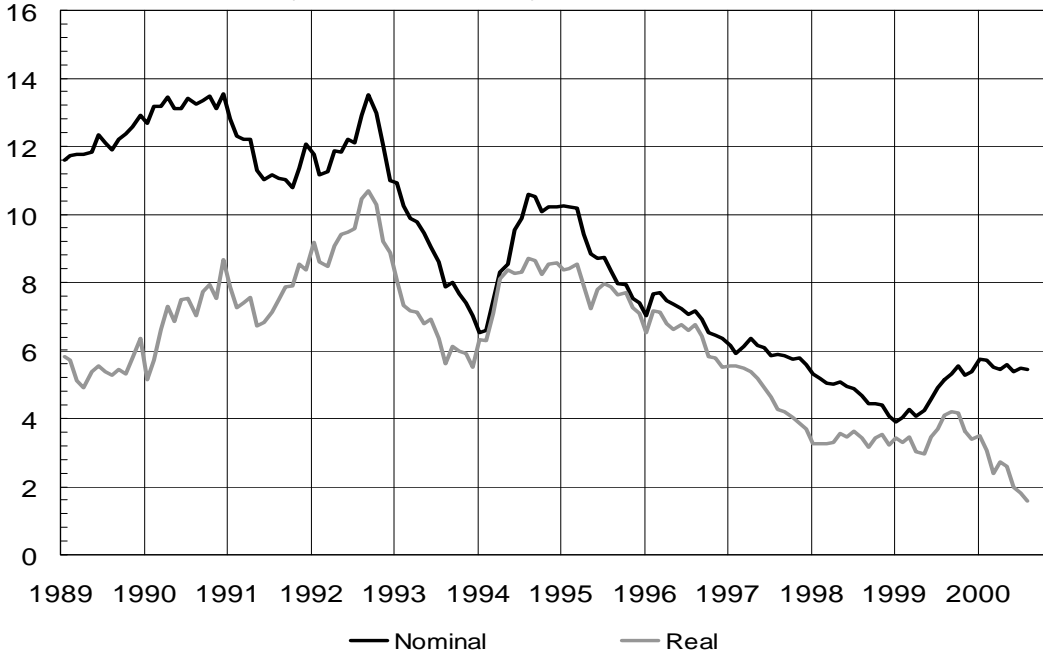


3-month euribor (from January 1999)  
 Latest observation July 2000

Chart 32.1.

**REAL AND NOMINAL INTEREST RATES**

Government bond yields, close to 10 year, %



Latest observation July 2000

Chart 33.

**YIELD CURVE**

Maturities over one year based on government benchmark bonds, %

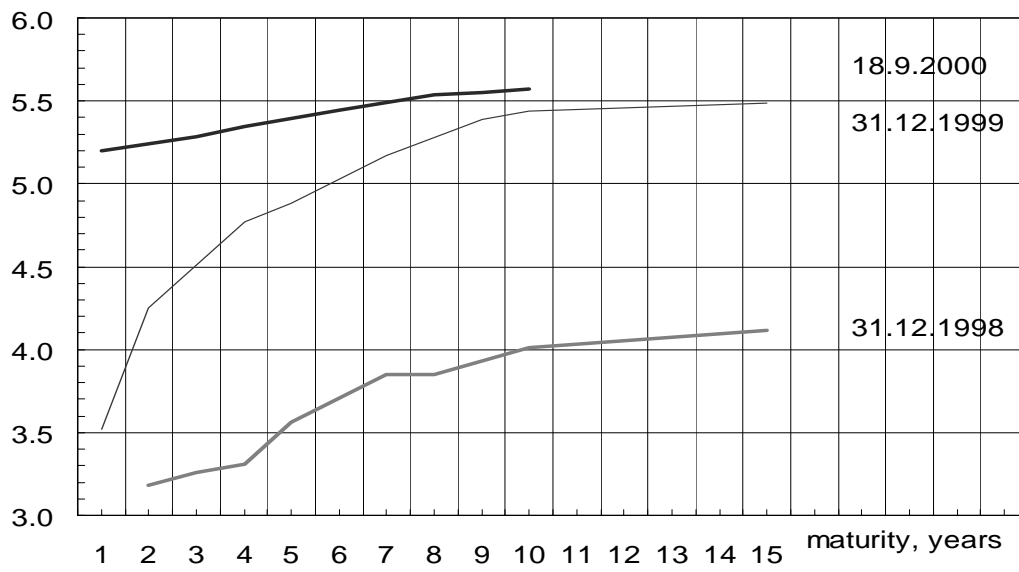


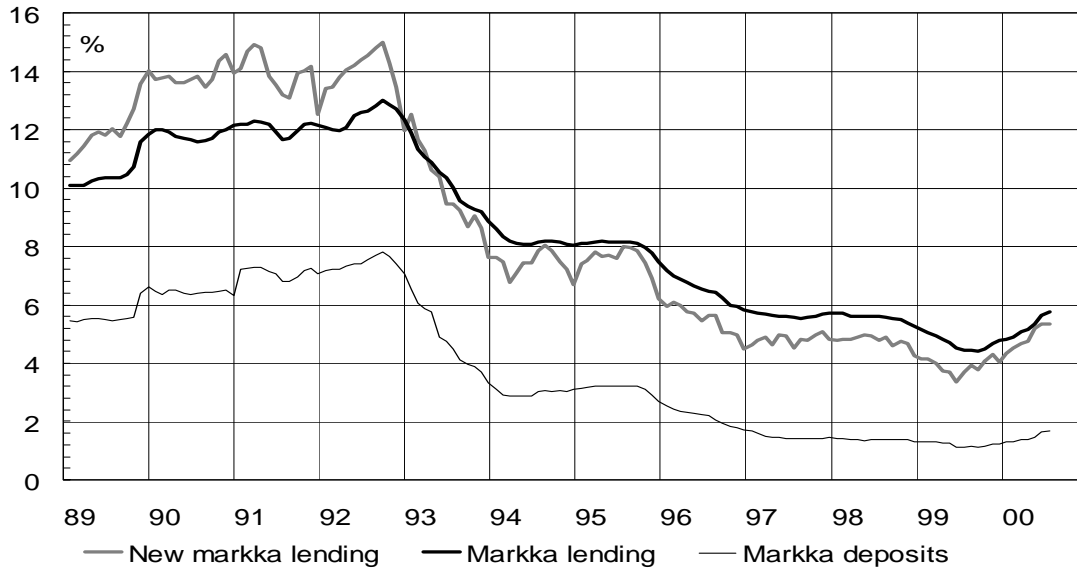
TABLE 4

### Interest rates and exchange rates

<b>Market rates</b> , %, daily averages	1999	2/2000	3/2000	4/2000	5/2000	6/2000	7/2000	8/2000
EURIBOR								
1 month	2.862	3.359	3.589	3.791	4.163	4.370	4.408	4.574
3 months	2.961	3.537	3.747	3.925	4.362	4.502	4.583	4.777
6 months	3.054	3.735	3.936	4.083	4.544	4.681	4.837	5.011
12 months	3.183	4.111	4.267	4.365	4.849	4.965	5.105	5.248
Yields on government bonds								
5 years	4.07	5.19	5.04	5.24	5.48	5.31	5.42	5.41
10 years	4.74	5.72	5.50	5.46	5.59	5.39	5.48	5.43
<b>Exchange rates</b> , daily averages								
EUR exchange rate against US dollar, Pound sterling and Swedish krona								
Daily average								
US dollar	1.066	0.983	0.964	0.947	0.906	0.949	0.940	0.904
Pound sterling	0.659	0.615	0.611	0.598	0.601	0.629	0.623	0.607
Swedish krona	8.807	8.511	8.388	8.267	8.241	8.318	8.407	8.392
Trade-weighted competitiveness indicator 1982=100	121.2	124.8	125.8	126.8	127.6	125.7	125.9	127.2

Chart 34.

### BANKS' MARKKA LENDING RATES AND MARKKA FUNDING RATES



Latest observation July 2000

Chart 35.

### BANKS' INTEREST RATE MARGIN

Average rate on markka lending - Average markka deposit, %

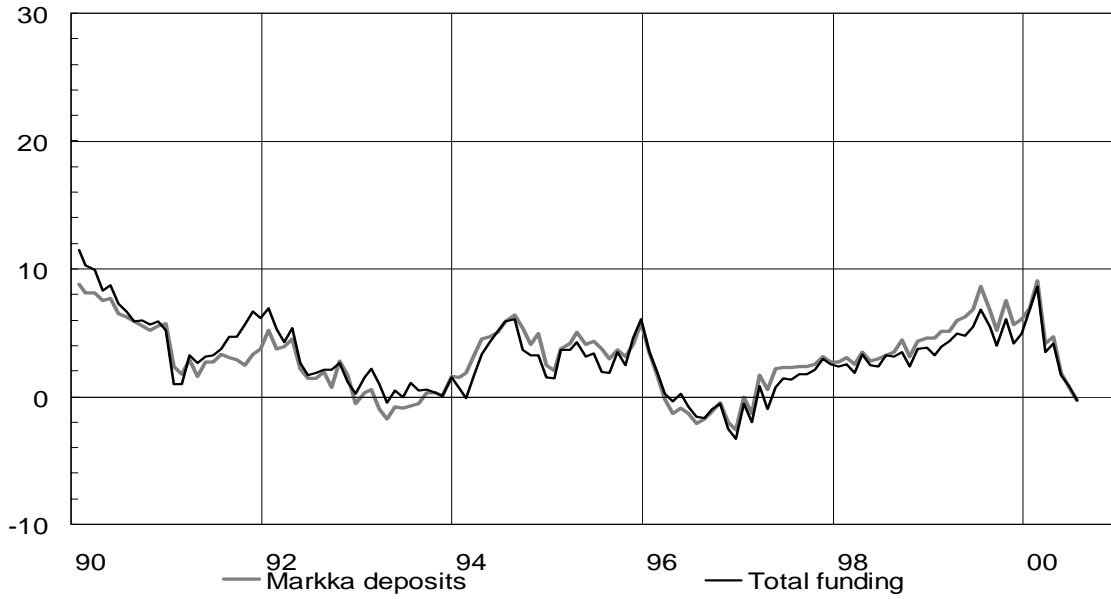


Latest observation July 2000

Chart 36.

**BANK FUNDING FROM THE PUBLIC**

12-month change, %

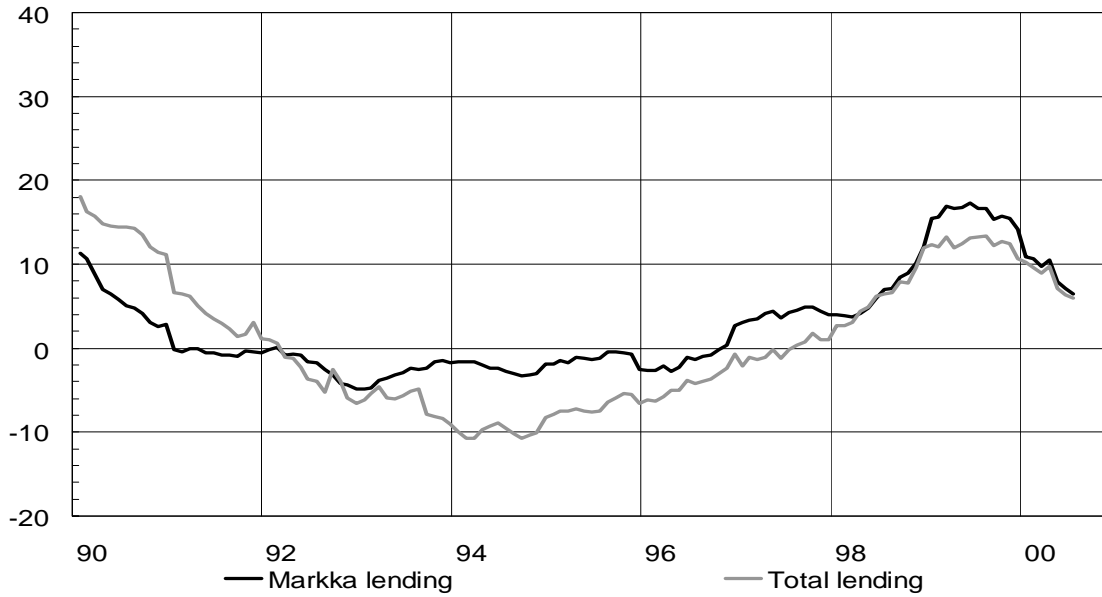


Latest observation July 2000

Chart 37.

**BANK LENDING TO THE PUBLIC**

12-month change, %



Latest observation July 2000

Chart 38.

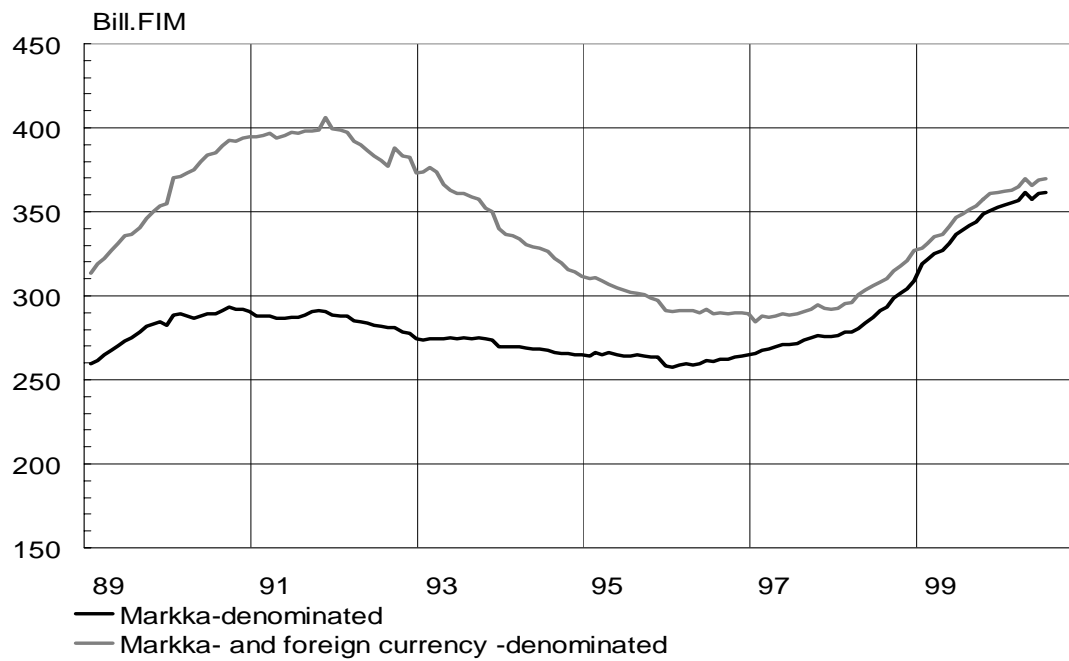
**OUTSTANDING BANK CREDIT**

Chart 39.

**HEX, HELSINKI EXCHANGES**  
**Share indices by sector**

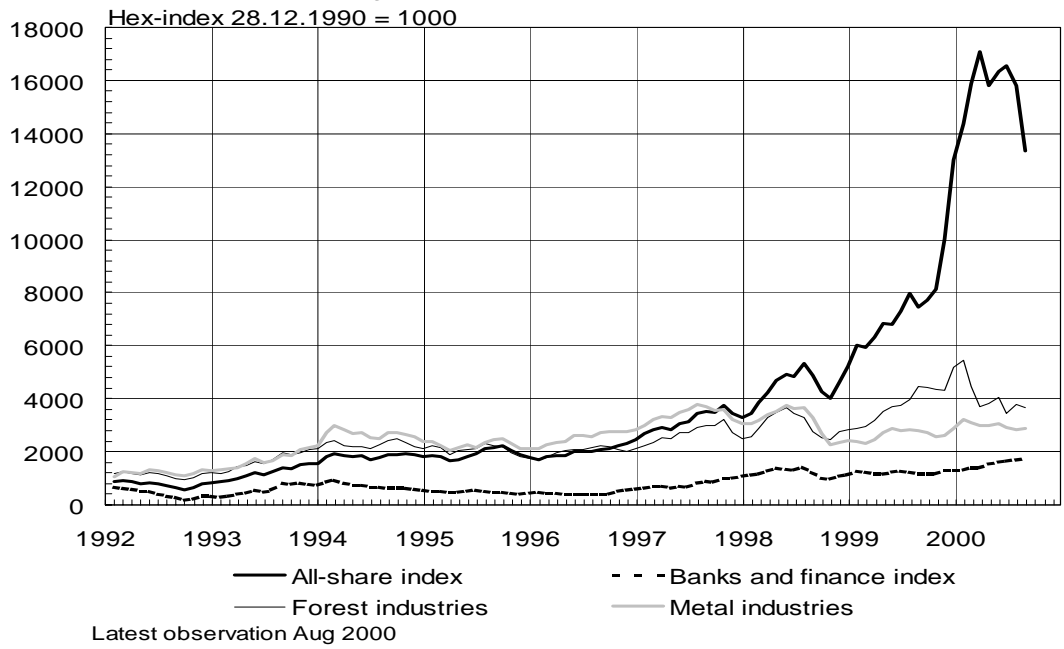


Chart 40.

**HEX HELSINKI EXCHANGES**  
**Share turnover**

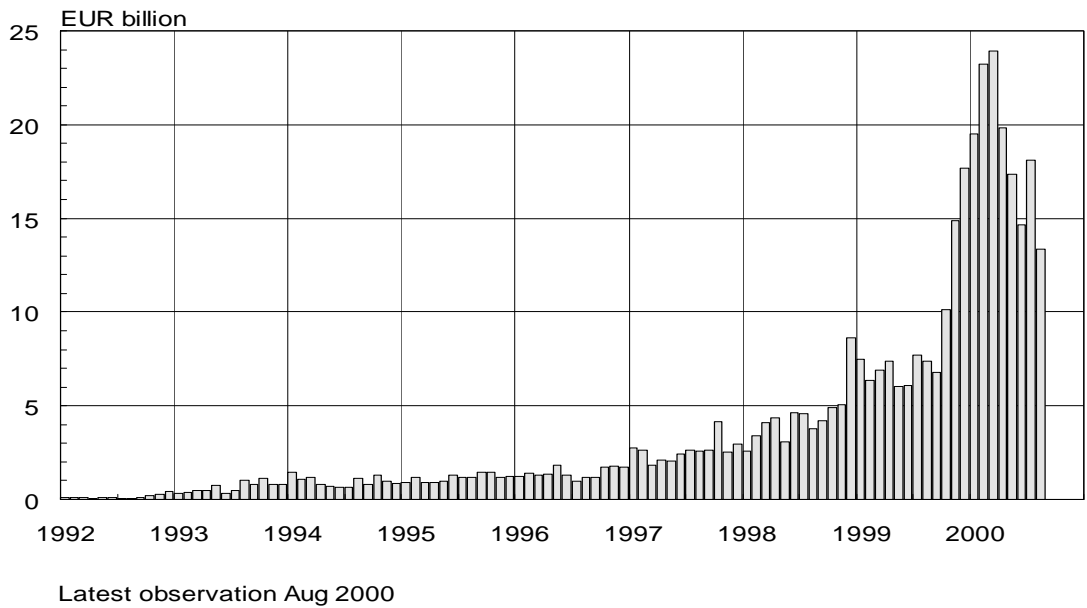


Chart 41.  
**HEX, HELSINKI EXCHANGES**  
**Market Value**

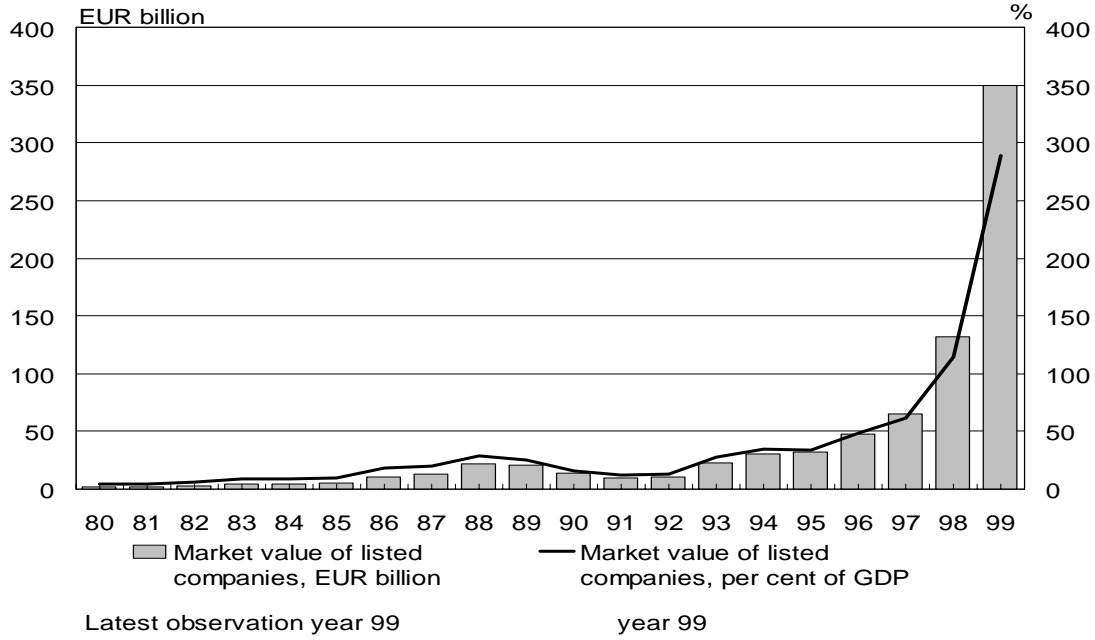


Chart 42.  
**GOVERNMENT BENCHMARK BONDS**

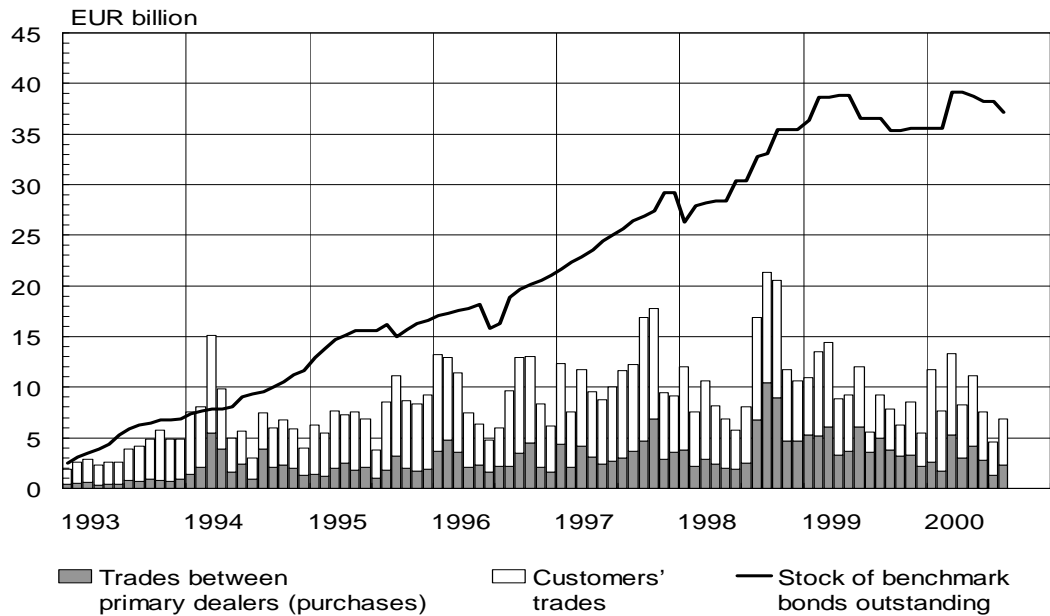




Chart 43.

**STOCK OF BONDS OUTSTANDING IN FINLAND**

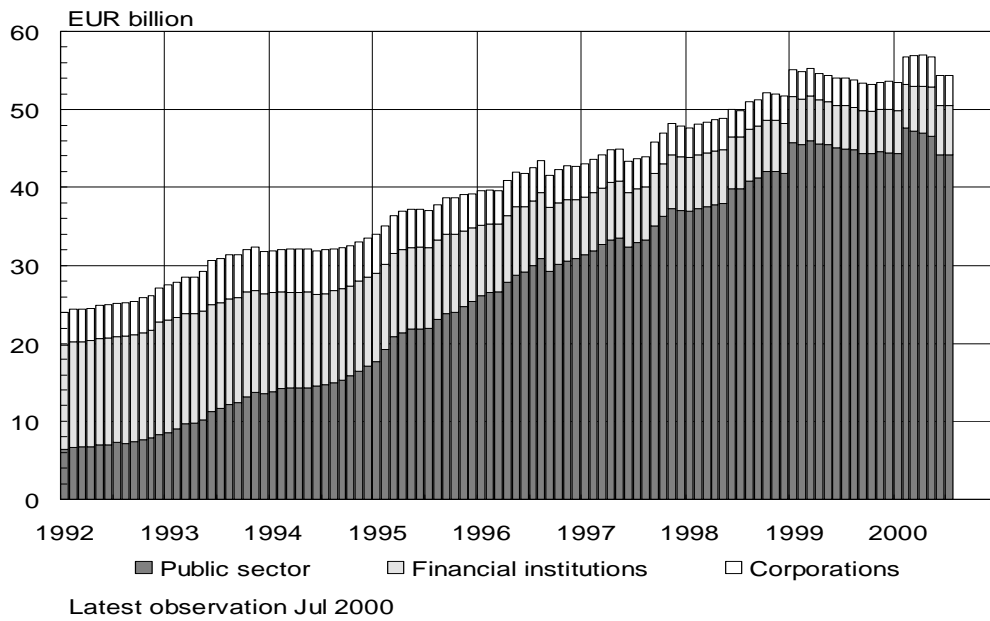


Chart 44.

**FOREIGN PORTFOLIO INVESTMENTS IN FINLAND**

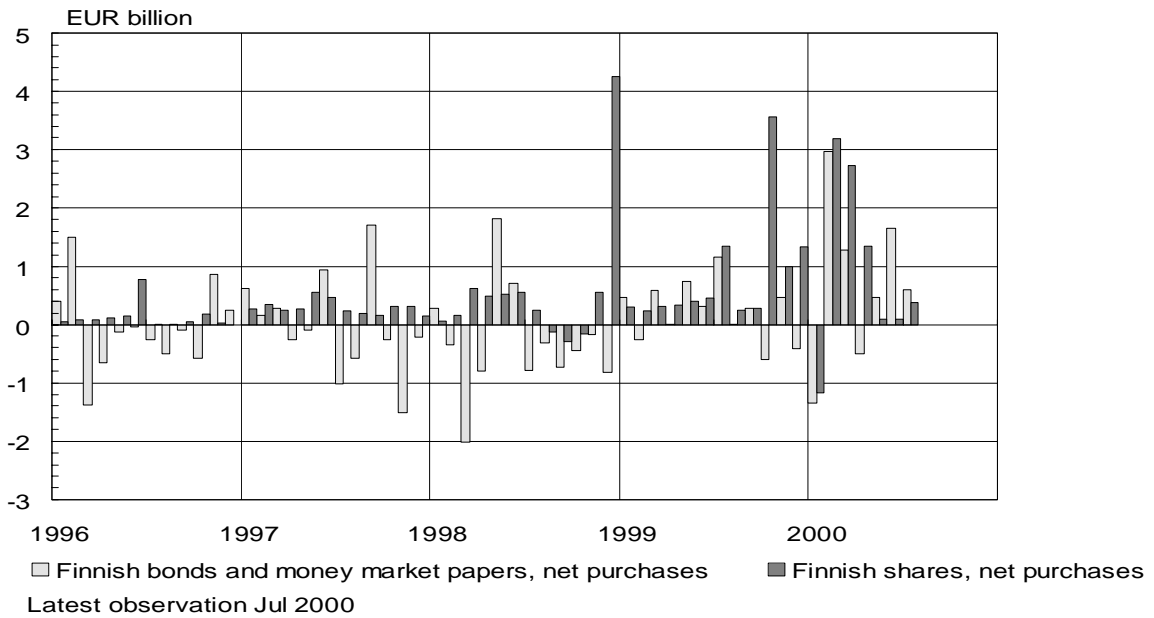


TABLE 5

## Key figures for the Finnish deposit banks, billions of FIM\*

All deposit banks	1992	1993	1994	1995	1996*	1997*	1998*	1999*	
Income from financial operations	10.7	13.0	13.7	12.4	11.0	11.7	13.5	13.5	
Other income	9.5	9.7	8.6	8.2	10.2	10.2	8.4	8.2	
Total income	20.2	22.7	22.3	20.6	21.2	21.9	21.9	21.7	
Expenses	14.9	15.3	16.4	15.5	12.8	12.0	11.4	11.5	
- pensionfund surplus refunded					1.2	1.5	0.6		
Depreciation	1.9	1.9	1.5	1.7	2.1	2.5	1.3	1.2	
Profit before credit and guarantee losse	3.4	5.5	4.4	3.4	7.5	8.9	9.2	9.0	
Credit and guarantee losses	14.0	14.7	11.2	6.2	3.7	2.4	1.8	0.5	
Profit before extraordinary items, appropriations and taxes	-10.6	-9.2	-6.8	-2.8	3.8	6.5	7.3	8.5	
Total assets	688.9	726.8	667.8	616.6	578.2	608.4	643.4	701.0	
Non-performing assets, net		35.9	25.4	19.6	12.3	8.3	5.5	4.8	
Capital adequacy, %	10.7	10.7	11.7	12.0	11.4	11.6	11.5	11.7	
	1992	1993	1994	1995	1996	1997	1998	1999	Jul 2000
Markka deposits of the public	264.6	268.8	275.4	291.4	283.7	291.1	304.7	323.2	319.1
- 12-month percentage change	-0.5	1.6	2.5	5.8	-2.7	2.6	4.6	6.1	-0.3
Markka lending to the public	274.4	269.8	264.7	258.0	265.0	275.7	309.1	353.1	361.3
- 12-month percentage change	-4.9	-1.7	-1.9	-2.5	2.7	4.0	12.1	14.2	6.5
Lending to the public (total)	373.2	339.6	311.8	291.5	289.1	292.0	326.8	361.6	369.7
- 12-month percentage change	-6.5	-9.0	-8.2	-6.5	-0.7	1.0	11.9	10.6	6.0

\* groups consolidated

\* For 1996 and 1997, the figures for the new cooperative banks group are used, previously separate figures for the OKO group and cooperative banks

\* For 1998, the figures of Merita Pankki Oyj are used, previously figures for the Merita Oyj