

Chart 1.1

**GROSS DOMESTIC PRODUCT: FINLAND AND EU**

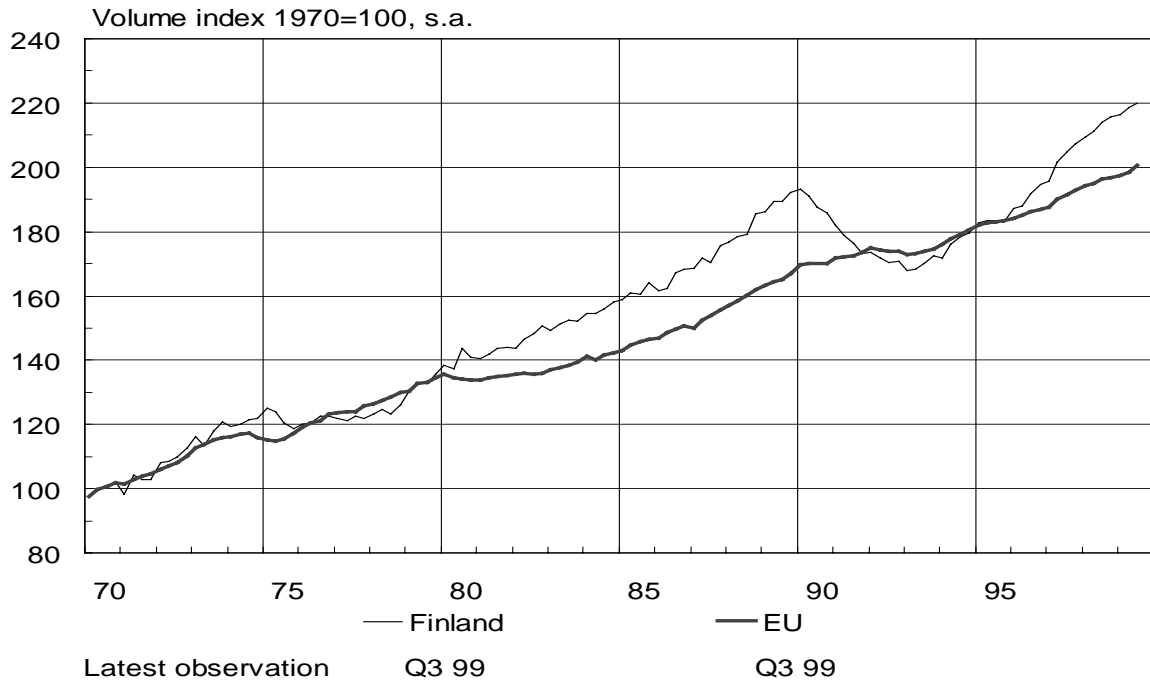


Chart 1.2

**GROSS DOMESTIC PRODUCT**

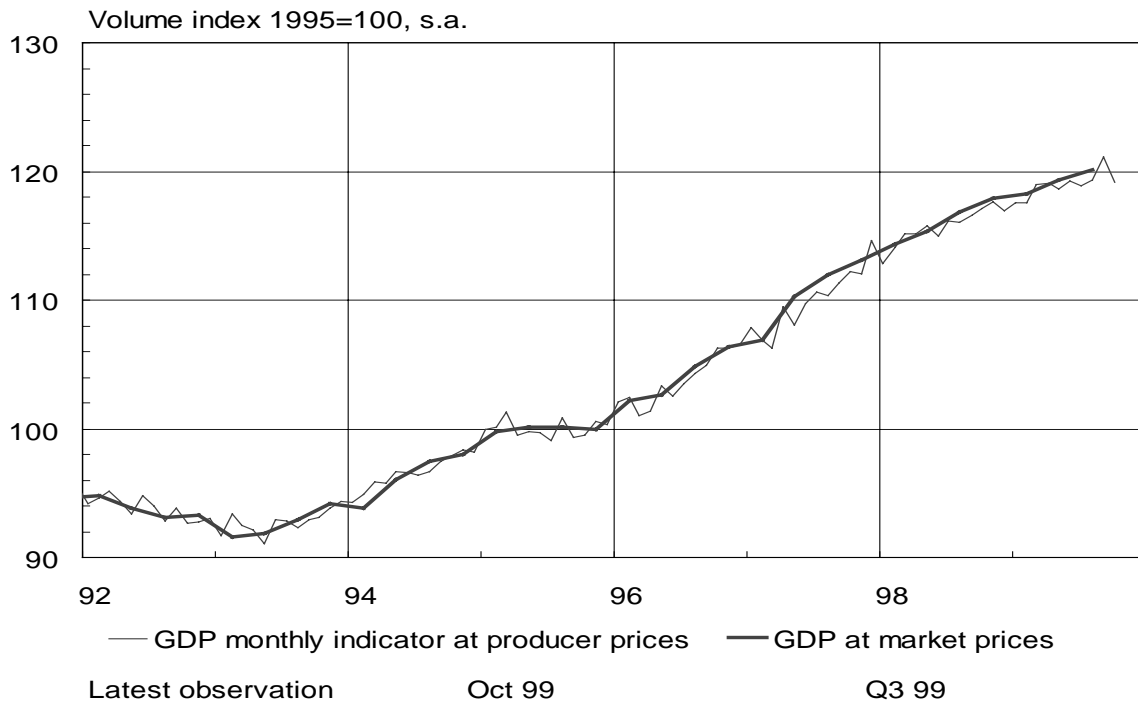


Chart 2.

### GDP<sup>1)</sup> BY SECTORS OF ORIGIN

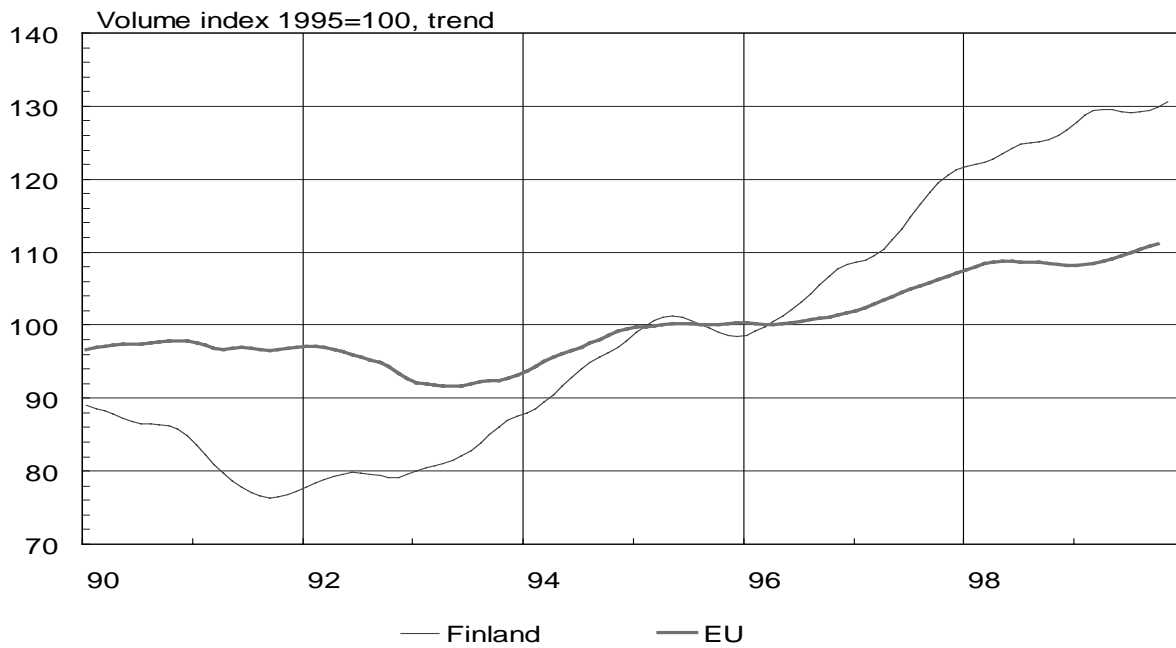


Latest observation Q3 99

1) GDP at producer prices

Chart 3.

### MANUFACTURING PRODUCTION



Latest observation

Nov 99

Oct 99

Chart 4.

**MAIN DEMAND COMPONENTS**

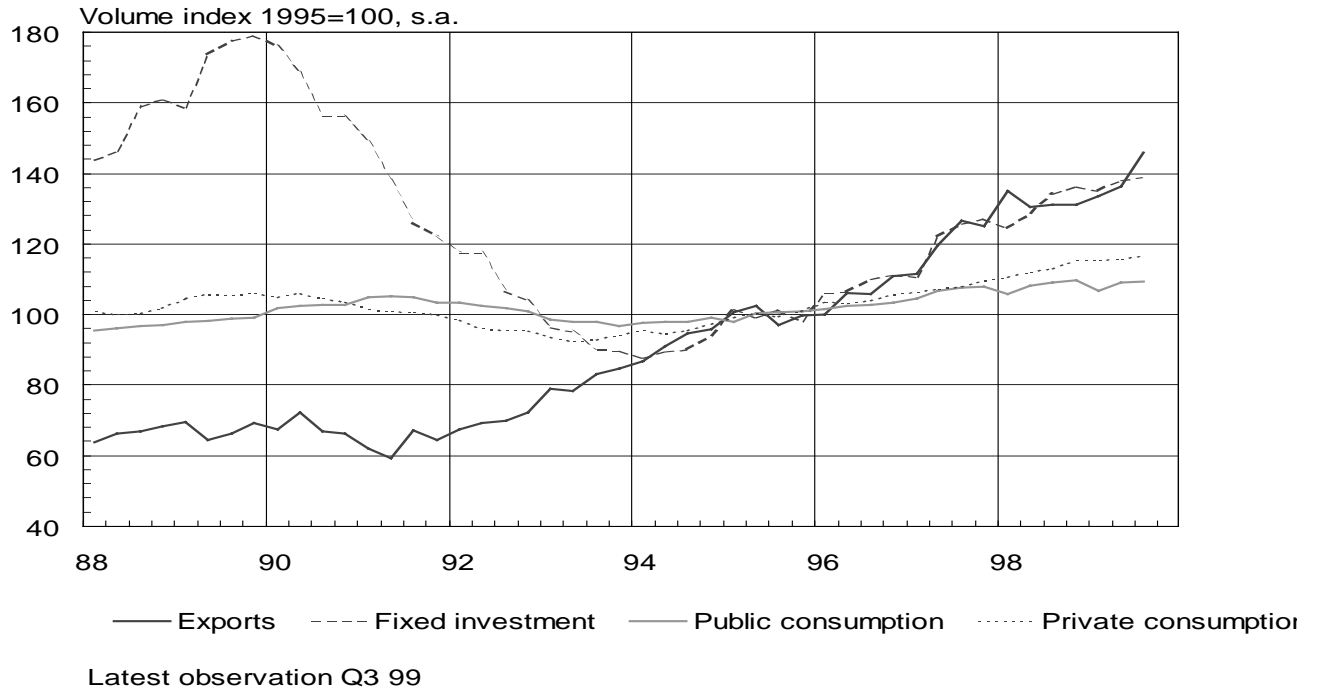


Chart 5.

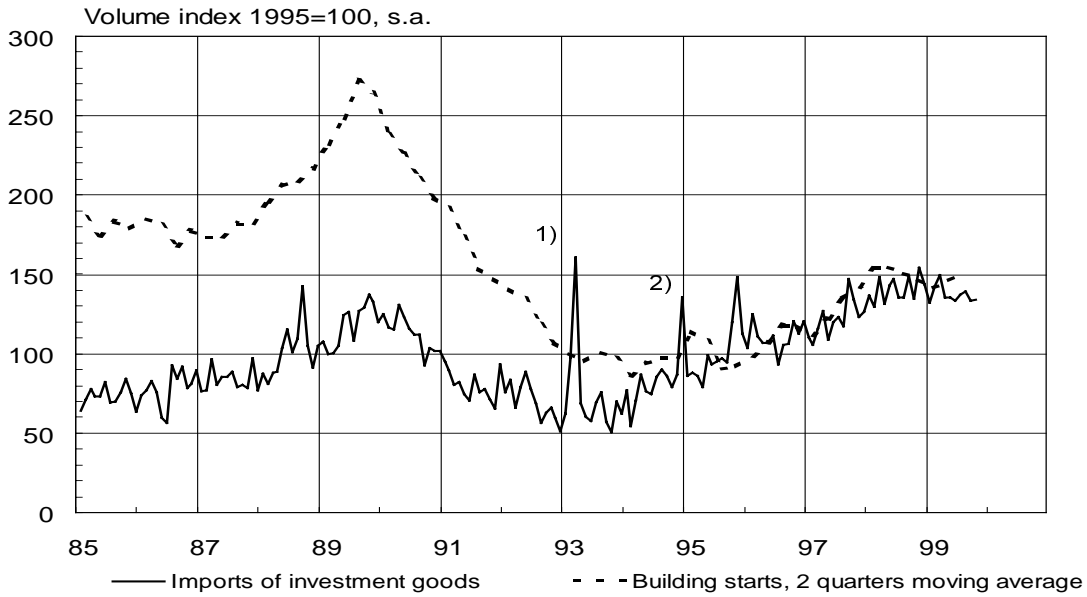
**HOUSEHOLD SECTOR'S SAVING RATIO**



Chart 6.  
**INDICATORS OF DOMESTIC DEMAND**  
**Private consumption**



**Fixed investment**

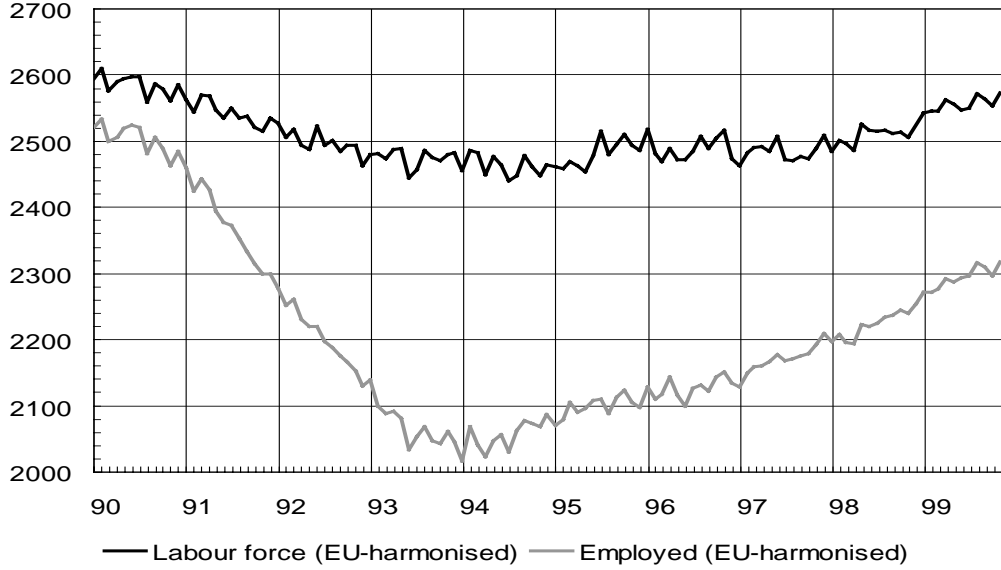


1) Peak in March 1993 due to cruiser ship imports (FIM 1.5 billion)  
 2) Includes increase caused by the change in statistical periods connected with Finland's entry into the EU

Chart 7.

**LABOUR FORCE AND EMPLOYMENT**

1000 persons, s.a.

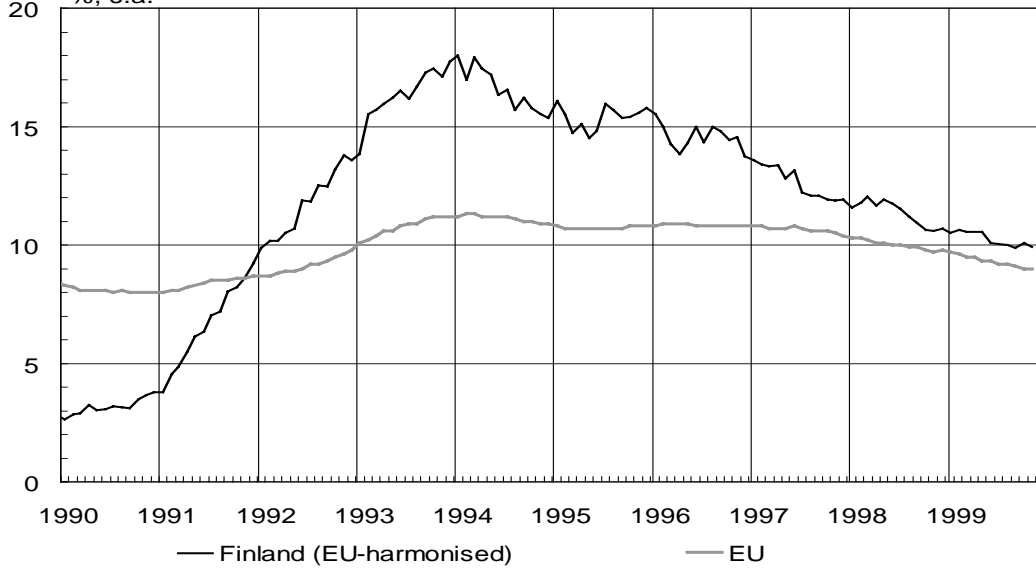


Latest observation Nov 99

Chart 8.

**UNEMPLOYMENT RATE**

%, s.a.



Latest observation Nov 99

Nov 99

TABLE 1

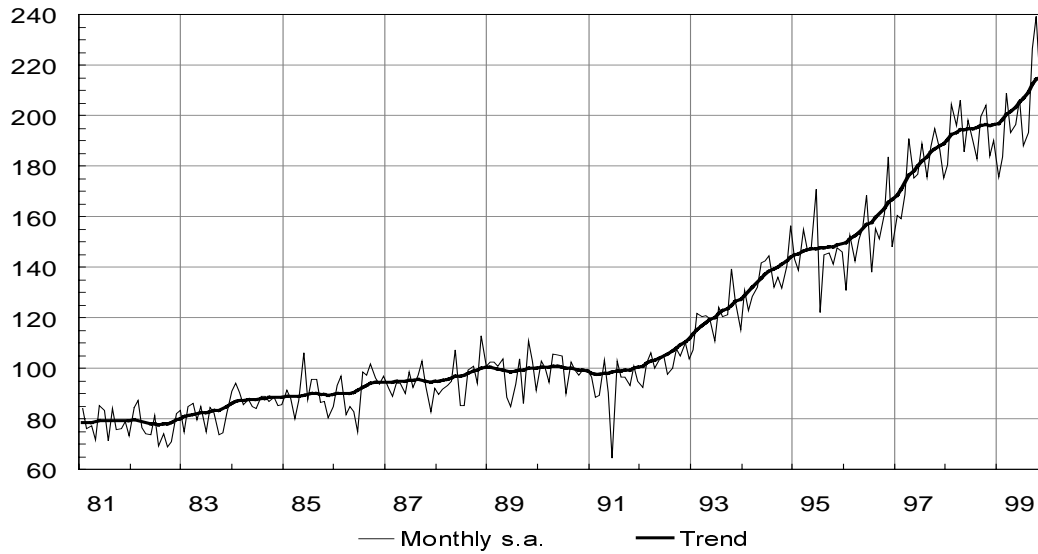
## Supply, demand and labour market indicators

	1996	1997	1998	1999	
	Volume change from previous year, per cent				
Gross domestic product 1) at market prices	4.0	6.3	5.0	2.8	Q3
GDP monthly indicator at producer prices	3.7	6.0	5.2	1.9	M10
				3.2	M01-M10
Manufacturing production	3.2	10.0	8.9	3.9	M11
				4.7	M01-M11
Consumption expenditure 1)	3.7	3.7	3.7	2.5	Q3
private	4.2	3.5	4.6	3.4	Q3
government	2.5	4.1	1.5	0.5	Q3
Gross fixed capital formation 1)	8.4	11.9	7.8	4.2	Q3
private	8.0	11.3	9.6	6.3	Q3
government	10.5	15.0	-0.4	-8.0	Q3
Domestic demand 1)	4.1	4.7	4.3	-0.9	Q3
Exports of goods and services 1)	5.8	14.1	9.3	11.8	Q3
Imports of goods and services 1)	6.4	11.3	8.5	3.6	Q3
	Percentage change from previous year				
Employed persons 2)	1.4	2.0	2.4	3.5	M11
				3.3	M01-M11
				Per cent	
Unemployment rate 2)	14.6	12.6	11.4	9.9	s.a. M11
				10.3	M01-M11

1) European System of Accounts 1995

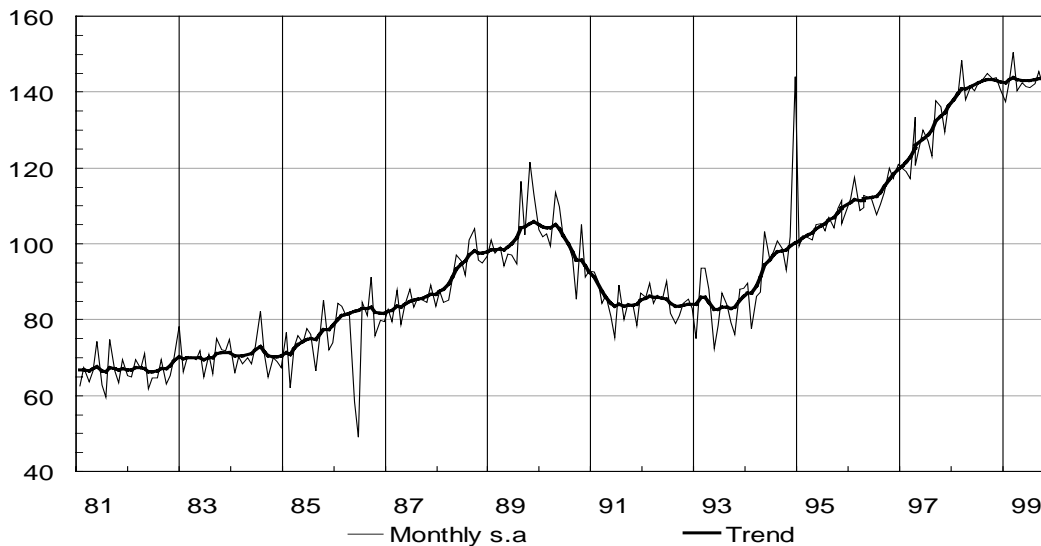
2) EU harmonized figures

Chart 9.  
**EXPORTS OF GOODS, volume**  
 Index 1990 =100



Latest observation Nov 99

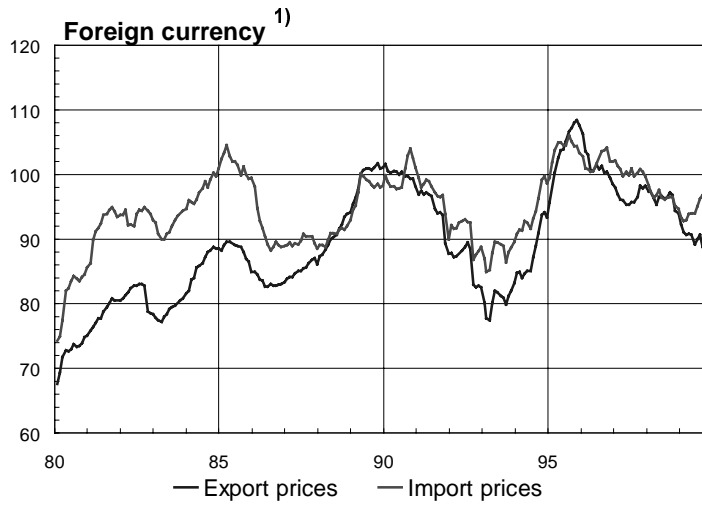
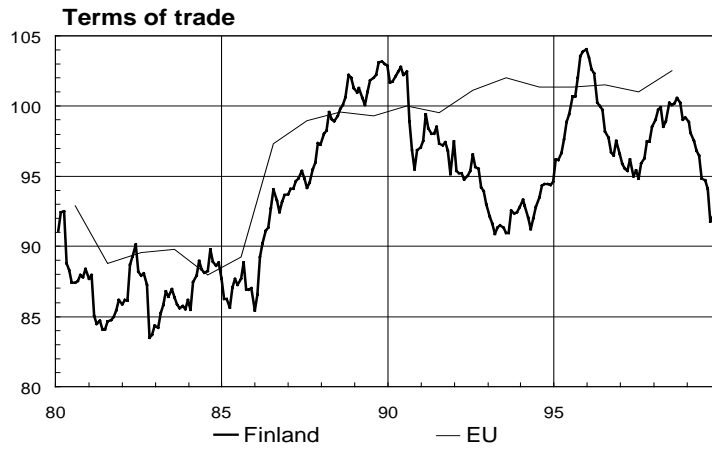
Chart 10.  
**IMPORTS OF GOODS, volume**  
 Index 1990 =100



Latest observation Nov 99

The change in statistical periods caused by Finland's entry into the EU has not been taken into account in the seasonally-adjusted figures or in the trend for December 1994

Chart 11.  
**FOREIGN TRADE PRICES**  
 Index 1990 = 100



1) FIM prices have been deflated using the trade-weighted currency index.



Chart 12.  
**EXTERNAL BALANCE**  
 12-month moving totals

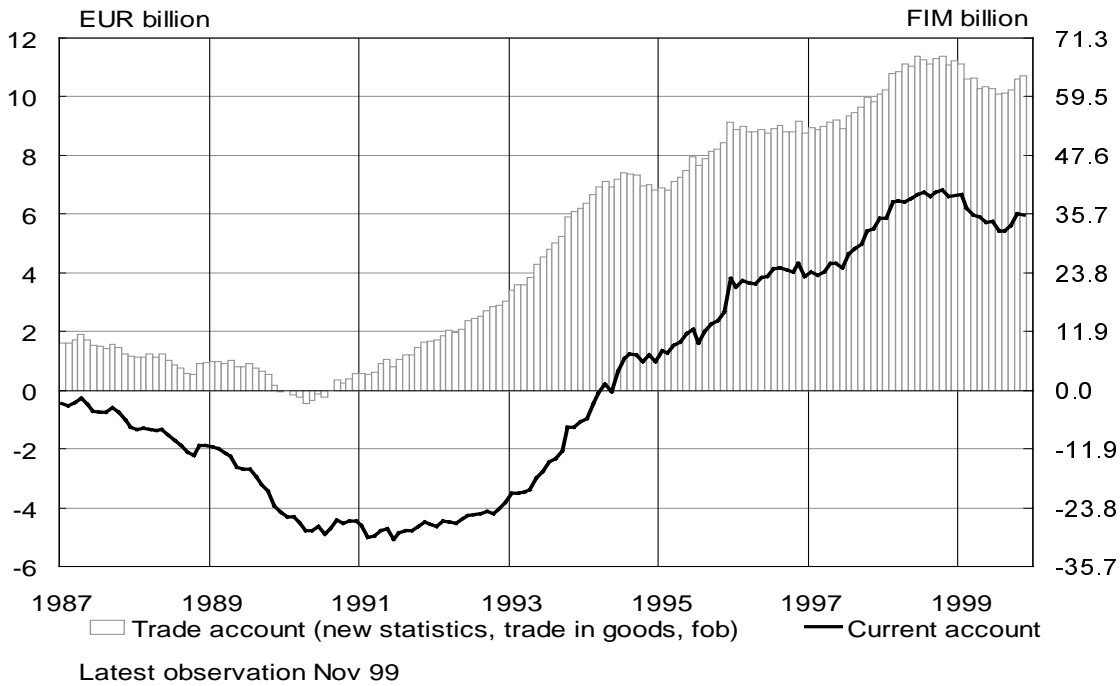


Chart 13.  
**SECTORAL DEBT RATIOS**

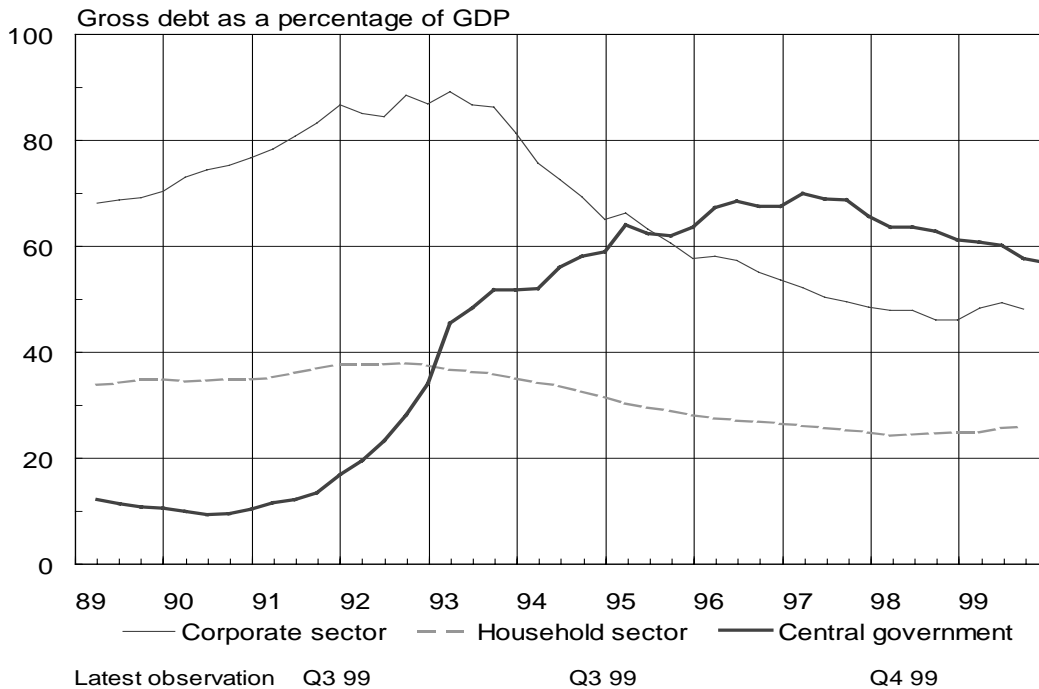


Chart 14.

**CORPORATE SECTOR BORROWING**

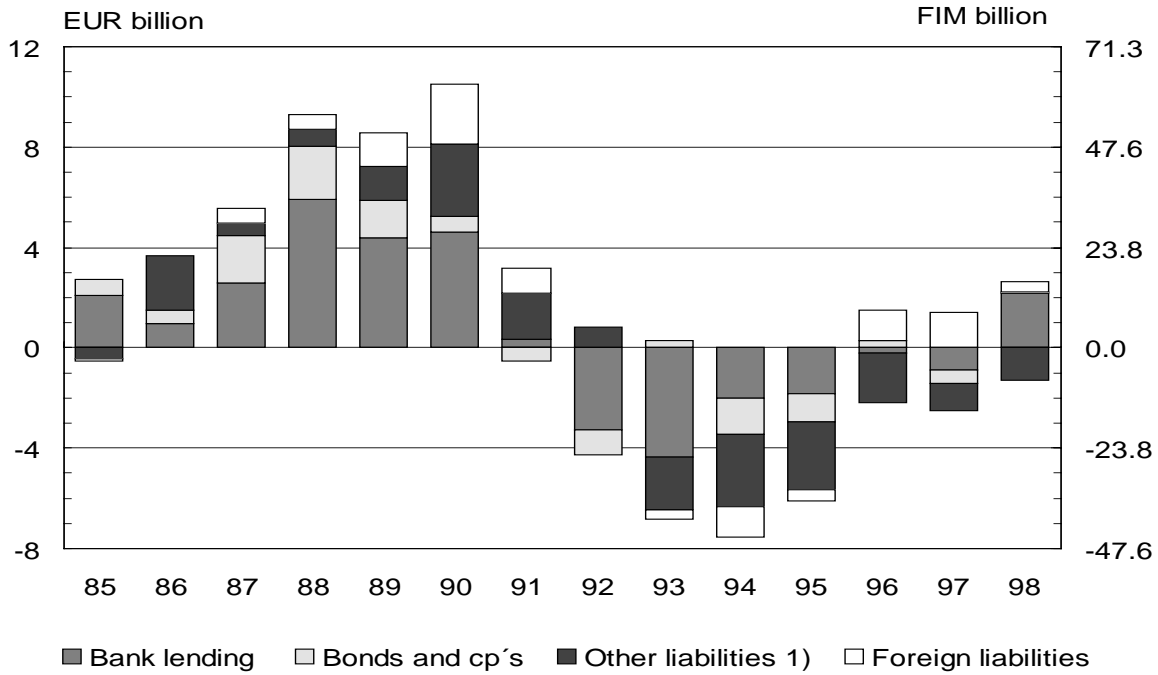
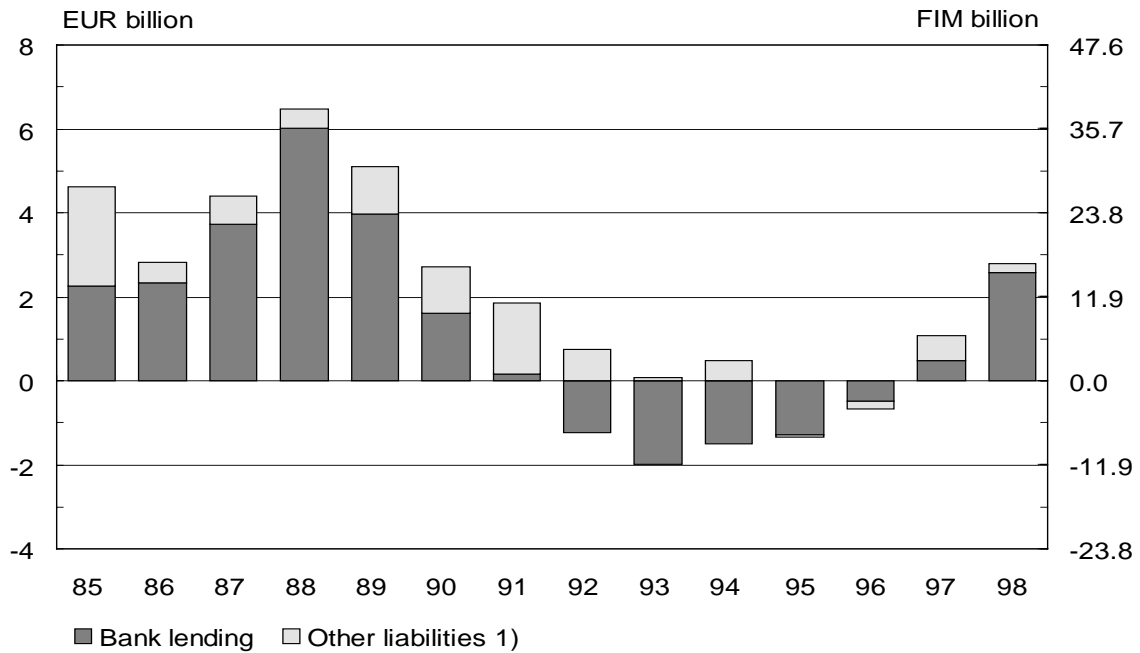


Chart 15.

**HOUSEHOLDS' BORROWING**

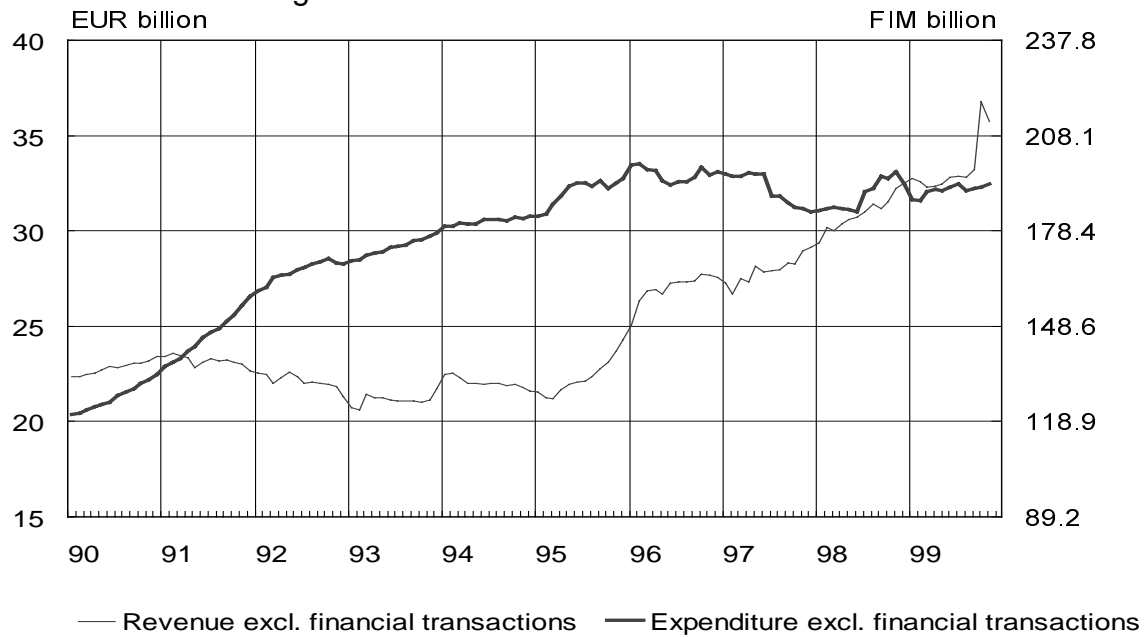


1) Due to a change (1996) in how the sectoral breakdown is made, there was a FIM 3.5 billion shift from households to the corporate sector.

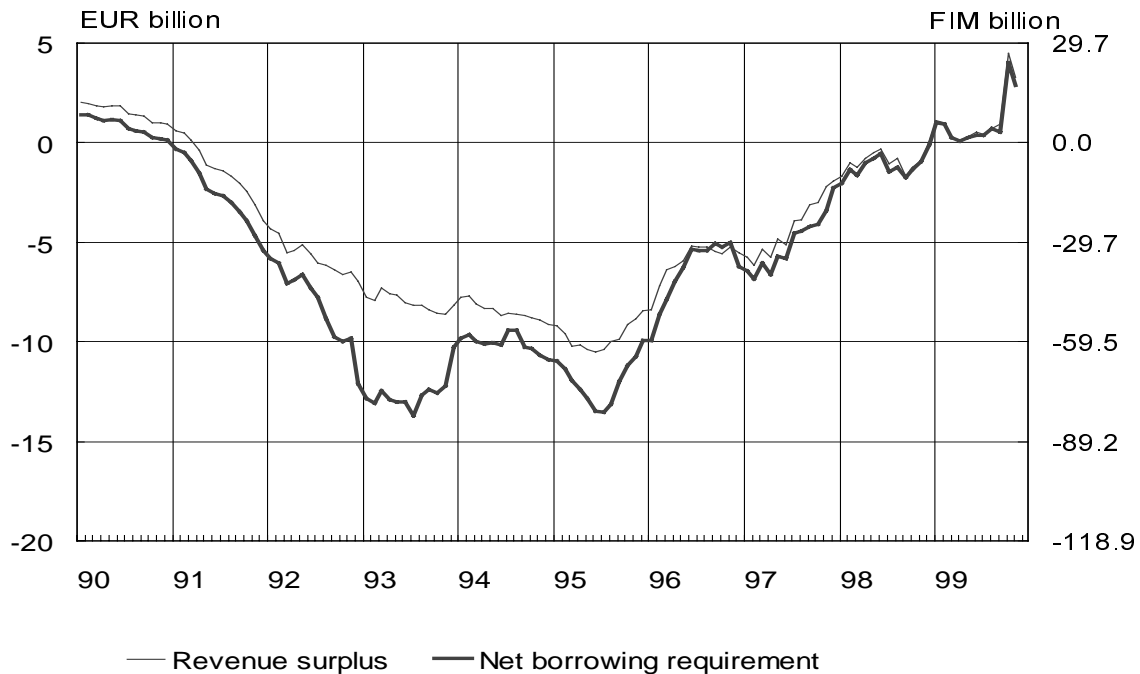
Chart 16.

### CENTRAL GOVERNMENT FINANCES

12-month moving totals



— Revenue excl. financial transactions — Expenditure excl. financial transactions



— Revenue surplus — Net borrowing requirement

Latest observation November 99

Chart 17.

## NET INTERNATIONAL INVESTMENT POSITION, international comparison

Per cent of exports of goods and services in 1998

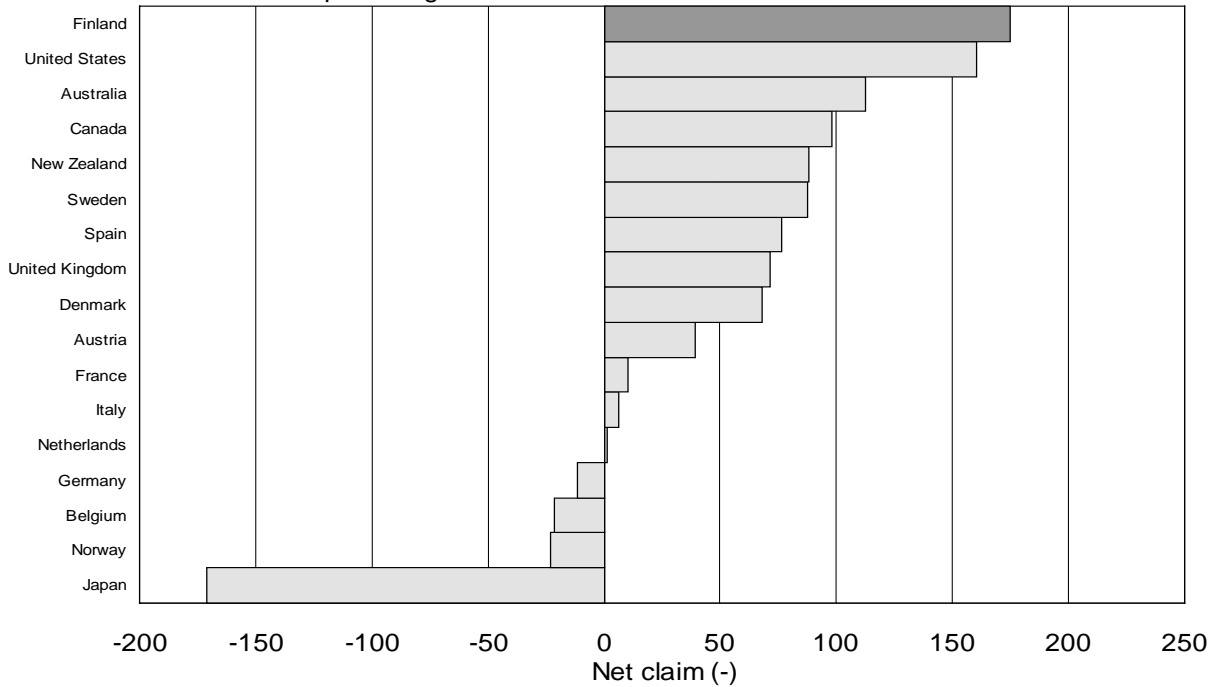


Chart 18.

## FINLAND'S NET INTERNATIONAL INVESTMENT POSITION

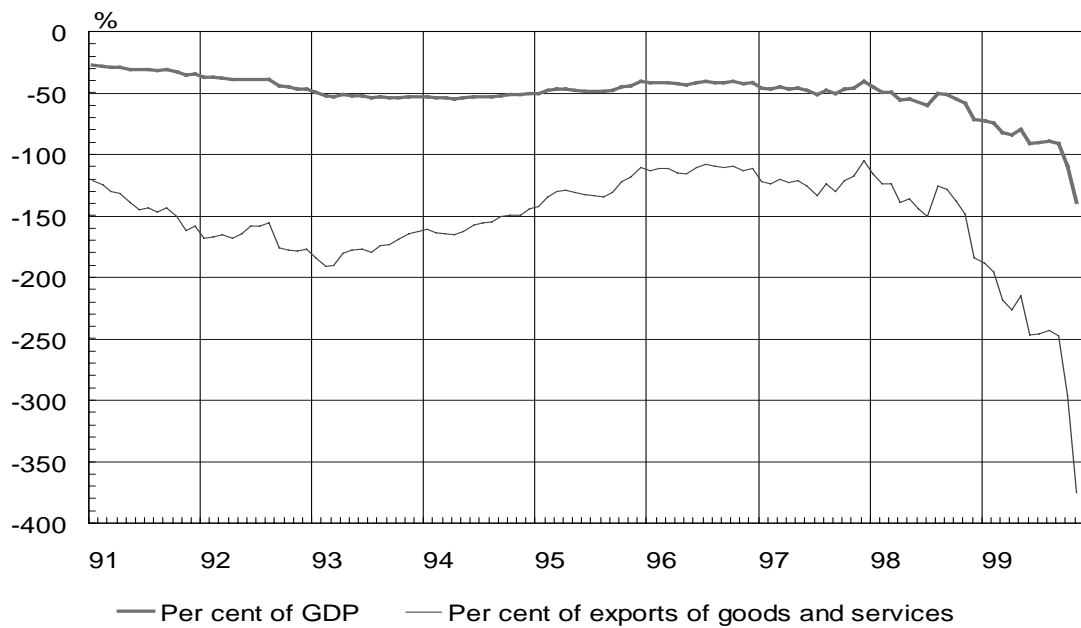


TABLE 2

## External balance and sectoral finance indicators

	1995	1996	1997	1998	1999
<b>Trade account</b>					
EUR billion	9.1	8.8	10.1	11.2	9.9 M01-M11 0.9 M11
per cent of GDP	9.6	8.9	9.5	9.7	
<b>Current account</b>					
EUR billion	3.8	3.9	5.9	6.6	5.2 M01-M11 0.5 M11
per cent of GDP	4.0	3.9	5.5	5.7	
<b>Capital account. EUR billion</b>	-4.1	-6.2	-4.0	-6.4	-5.6 M01-M11 -0.5 M11
General government	-0.1	1.1	-1.0	-4.0	-4.5 M01-M11 0.6 M11
Direct investment					
to Finland	0.8	0.9	1.8	10.9	2.4 M01-M11 0.2 M11
abroad	1.1	2.8	4.6	16.8	4.5 M01-M11 0.1 M11
Shares	1.3	0.9	2.0	5.0	4.7 M01-M11 0.4 M11
Other capital (incl. errors and omissions)	-4.9	-6.4	-2.2	-1.6	-3.8 M01-M11 -1.5 M11
Foreign exchange reserve (increase -)	0.2	2.4	-1.8	-0.2	0.4 M01-M11 0.0 M11
<b>Net lending</b> (saving minus investment)					
Private sector					
EUR billion	7.3	7.0	7.5	5.2	
per cent of GDP	7.7	7.1	7.0	4.5	
General government					
EUR billion	-3.5	-3.1	-1.6	1.5	
per cent of GDP	-3.7	-3.2	-1.5	1.3	
Central government					
EUR billion	-8.3	-7.1	-3.9	-1.7	
per cent of GDP	-8.7	-7.2	-3.7	-1.5	
Local government					
EUR billion	1.1	0.8	-0.7	-0.4	
per cent of GDP	1.2	0.8	-0.7	-0.3	
Social security funds					
EUR billion	3.6	3.2	3.0	3.6	
per cent of GDP	3.8	3.3	2.8	3.1	
<b>Net foreign debt</b>					
per cent of GDP	41.1	41.9	41.0	71.9	
per cent of exports of goods and services	111.0	111.6	105.0	184.3	
<b>Sectoral debt ratios</b> (gross debt per cent of GDP)					
Non-financial corporate sector	50.4	48.6	43.6	41.6	
Household sector	44.5	42.0	39.7	39.2	
General government (EMU)	58.1	57.6	55.0	49.7	
Central government	63.3	66.8	65.3	63.0	

Chart 19.

**EARNINGS**

Percentage change from previous year

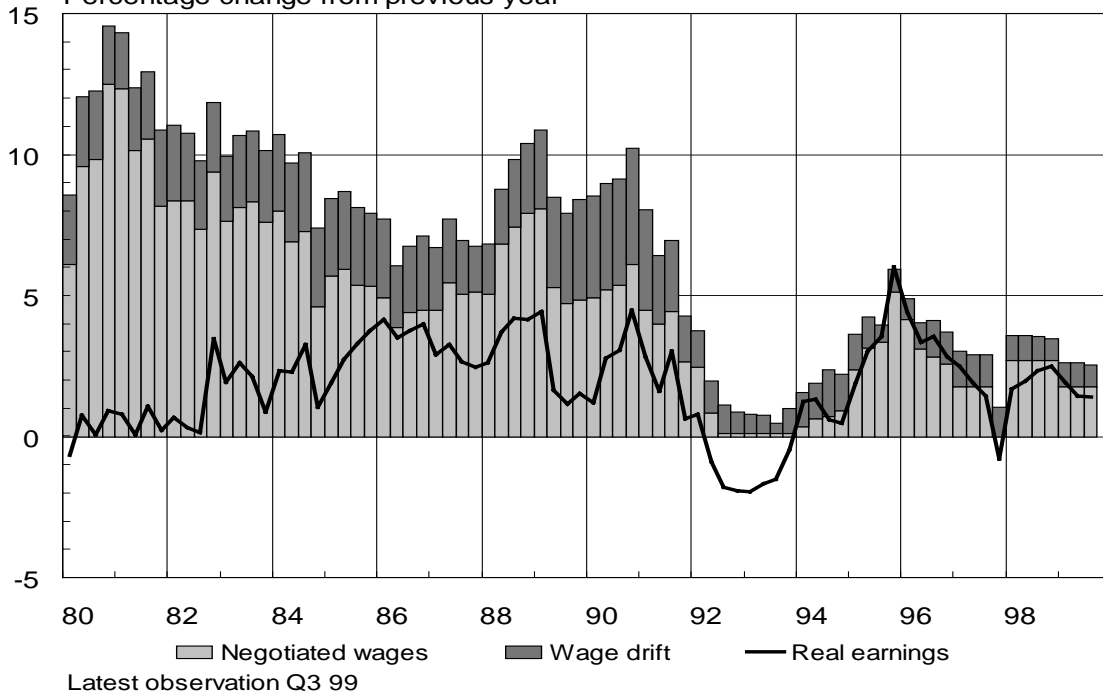
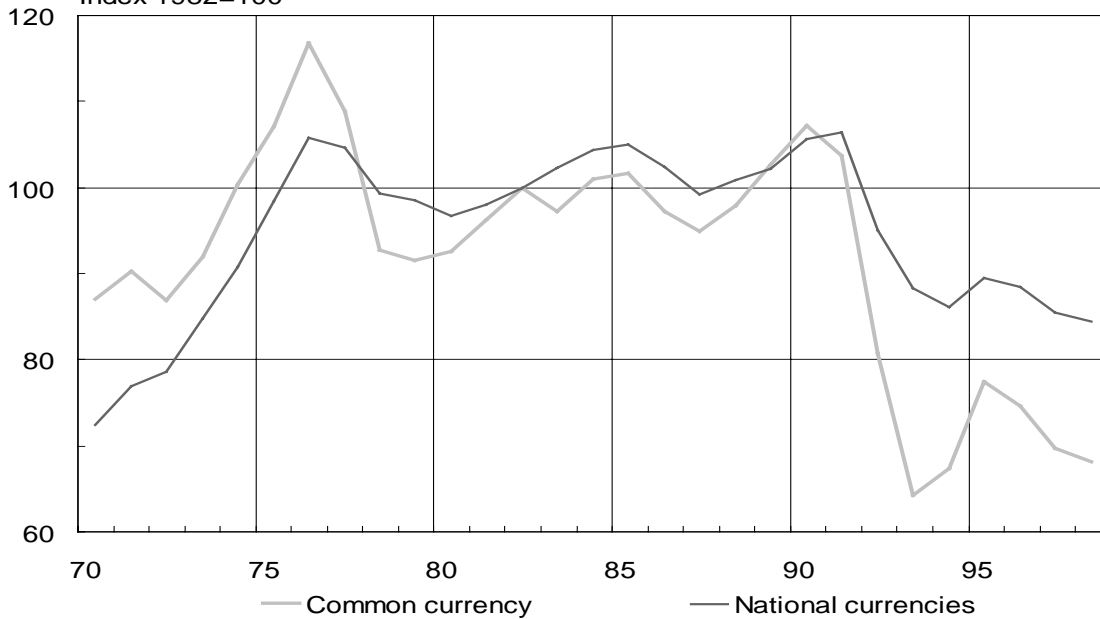


Chart 20.

**RELATIVE UNIT LABOUR COSTS IN MANUFACTURING**

Finland / competitor countries  
 Index 1982=100



Latest observation year 1998

A fall indicates improvement in competitive position

Chart 21.

**PRODUCER PRICE INDICES**

12-month percentage change

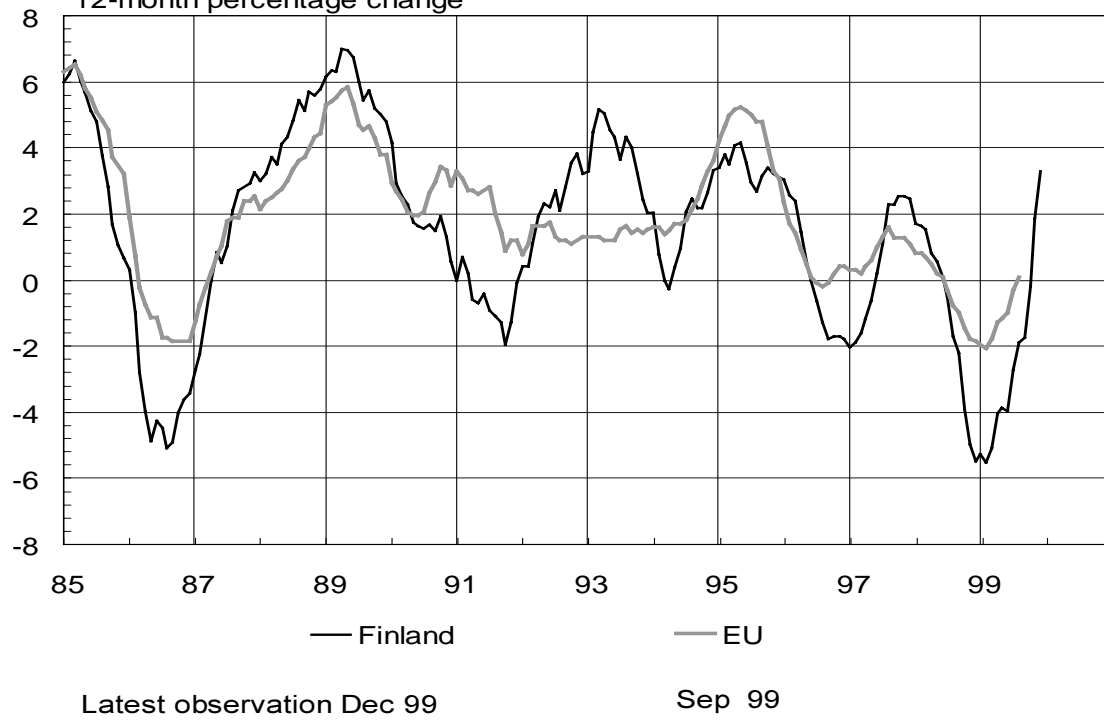


Chart 22.

**CONSUMER PRICES**

12-month percentage change

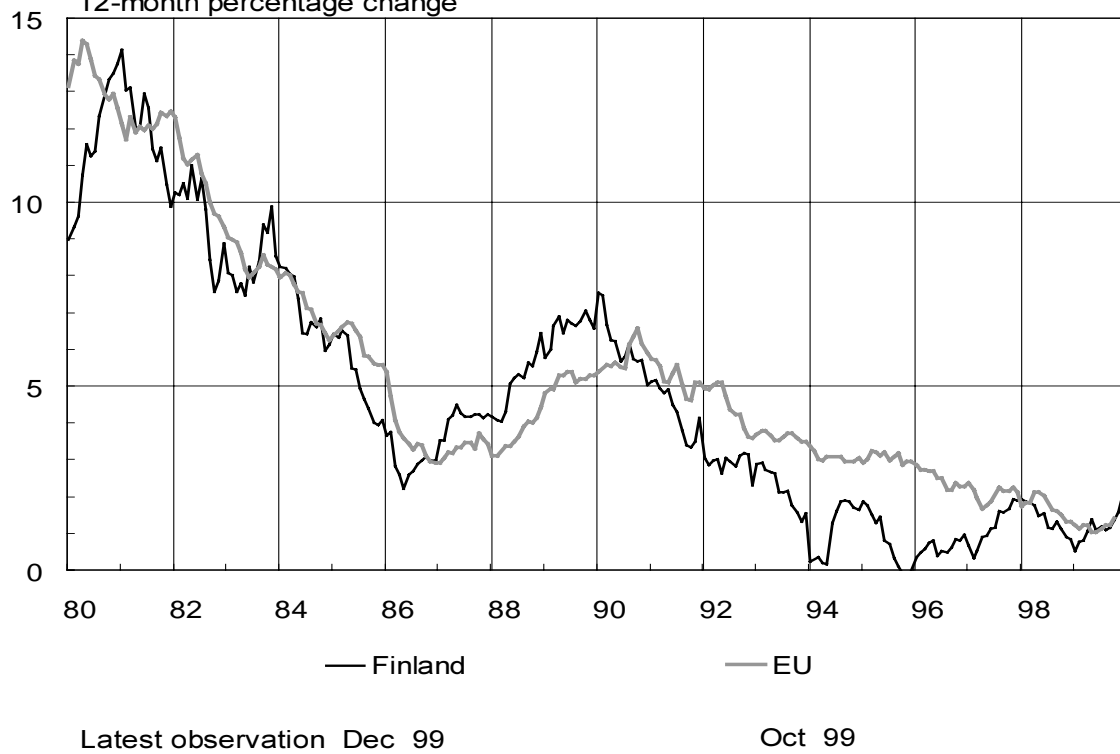
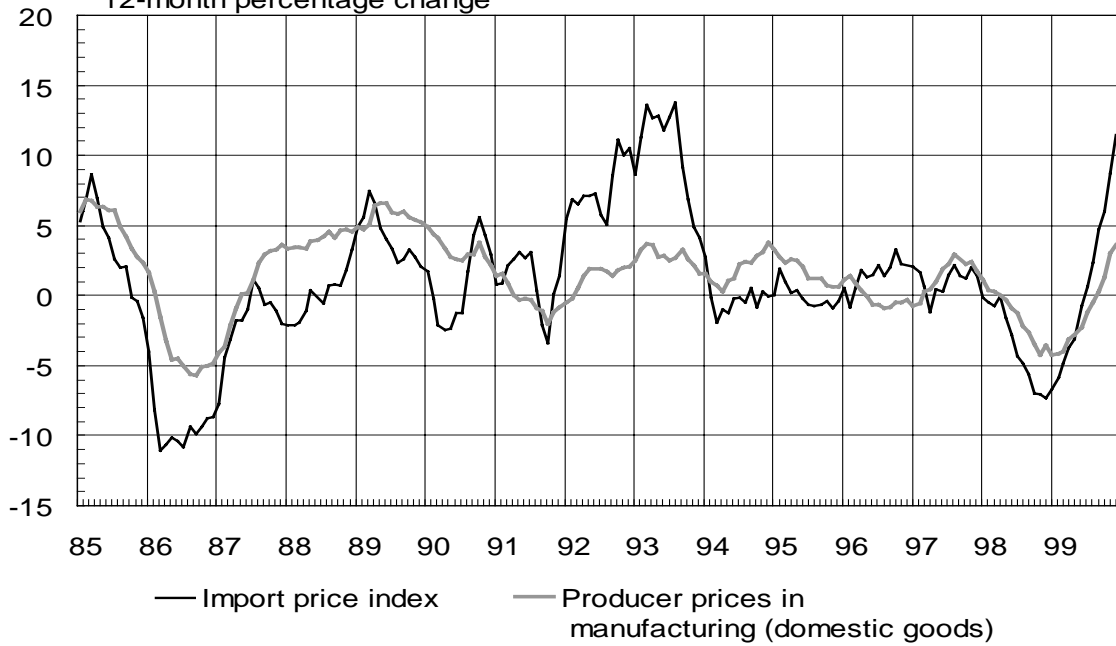


Chart 23 .

**IMPORT PRICES AND PRODUCER PRICES**

12-month percentage change

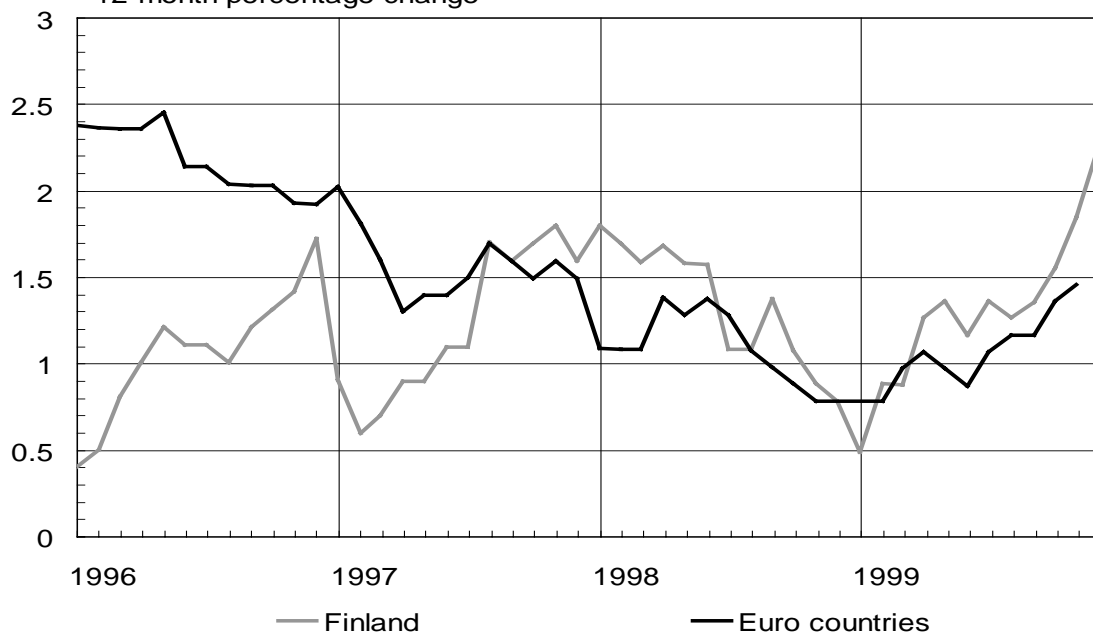


Latest observation Dec 99

Chart 24.

**HARMONIZED CONSUMER PRICE INDEX**

12-month percentage change



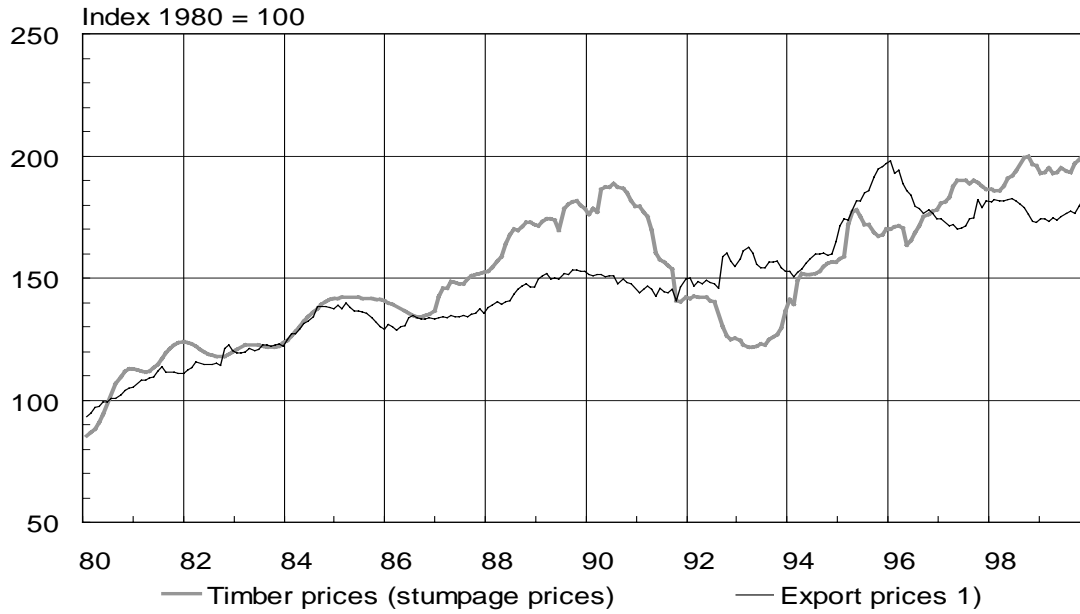
Latest observation Dec 99

Nov 99



Chart 25.

**TIMBER PRICES AND EXPORT PRICES OF FOREST INDUSTRY PRODUCTS**



Latest observation Dec 99

1) Export price index of Statistics Finland from beginning of 1995

Chart 26.

**DWELLING PRICES**

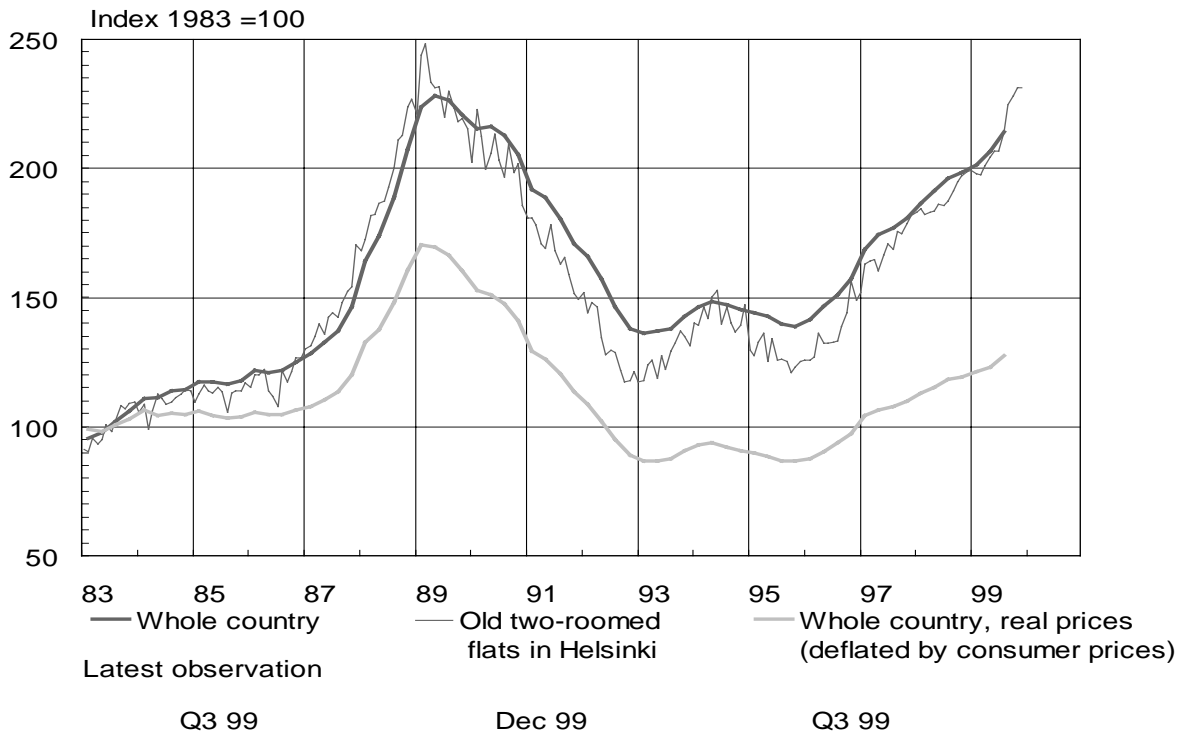


TABLE 3

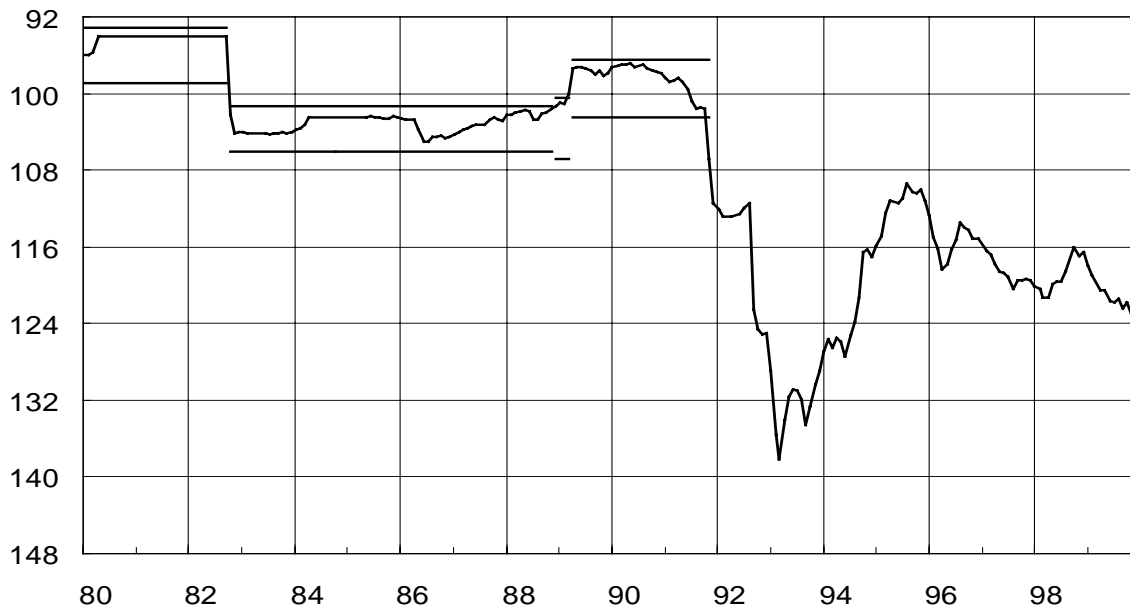
## Cost and price indicators, percentage change

	1997	1998	1999
<b>Labour costs</b>			
Index of wages and salaries	2.1	3.6	2.5 Q3
Unit labour costs			
Whole economy	-0.8	2.6	..
Manufacturing	-5.6	0.7	..
<b>Price indices</b>			
Export prices	-2.1	0.0	1.7 M12 -4.4 M01-M12
Import prices	1.1	-3.5	11.4 M12 0.6 M01-M12
Producer prices	0.5	-1.1	4.6 M12 -1.1 M01-M12
Wholesale prices	1.5	-1.5	5.5 M12 -0.2 M01-M12
Consumer prices	1.2	1.4	2.0 M12 1.2 M01-M12
Indicator of the underlying inflation	0.7	1.0	1.9 M11 1.2 M01-M11
<b>Asset prices</b>			
Stumpage prices	9.0	3.0	3.0 M12 1.6 M01-M12
Dwelling prices	17.5	10.2	9.1 Q3
Share prices	56.9	41.6	147.1 M12 72.0 M01-M12

Chart 27.

## TRADE-WEIGHTED COMPETITIVENESS INDICATOR (OLD BANK OF FINLAND CURRENCY INDEX)

Index 1982=100



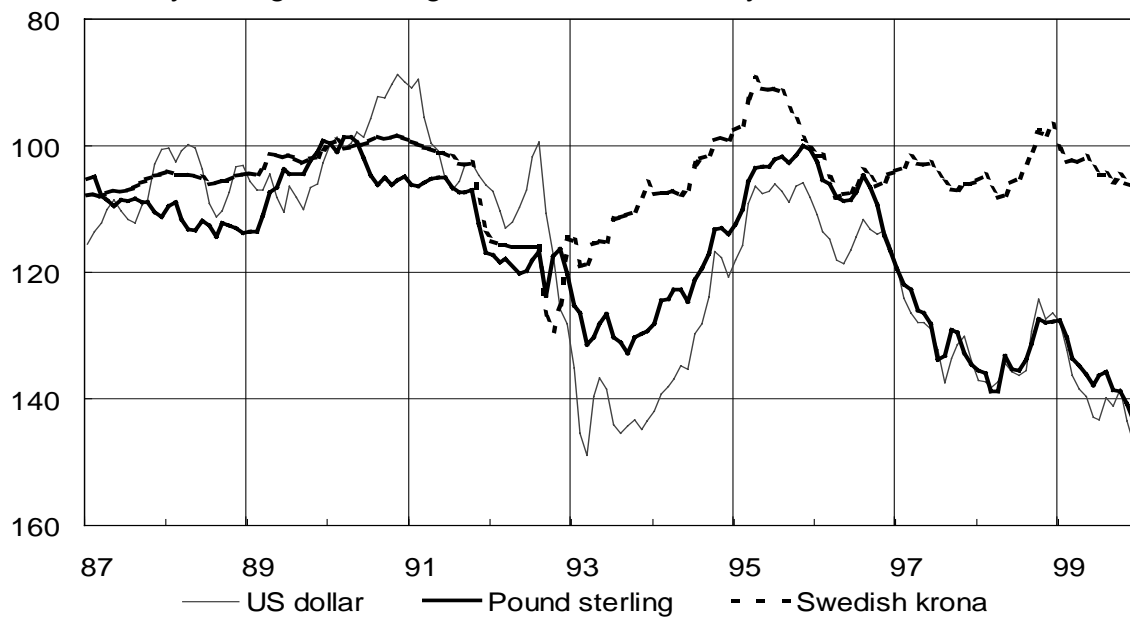
Latest observation Dec 1999

Chart 28.

## EXCHANGE RATES

Rising curve=EURO strenghtens

Monthly averages of selling rates in EURO, January 1990=100



Exchange rates until 31 Dec 1998 are based on corresponding Finnish markka rates converted into euro rates at the fixed conversion rate 5.94573.

Latest observation Dec 1999

Chart 29.

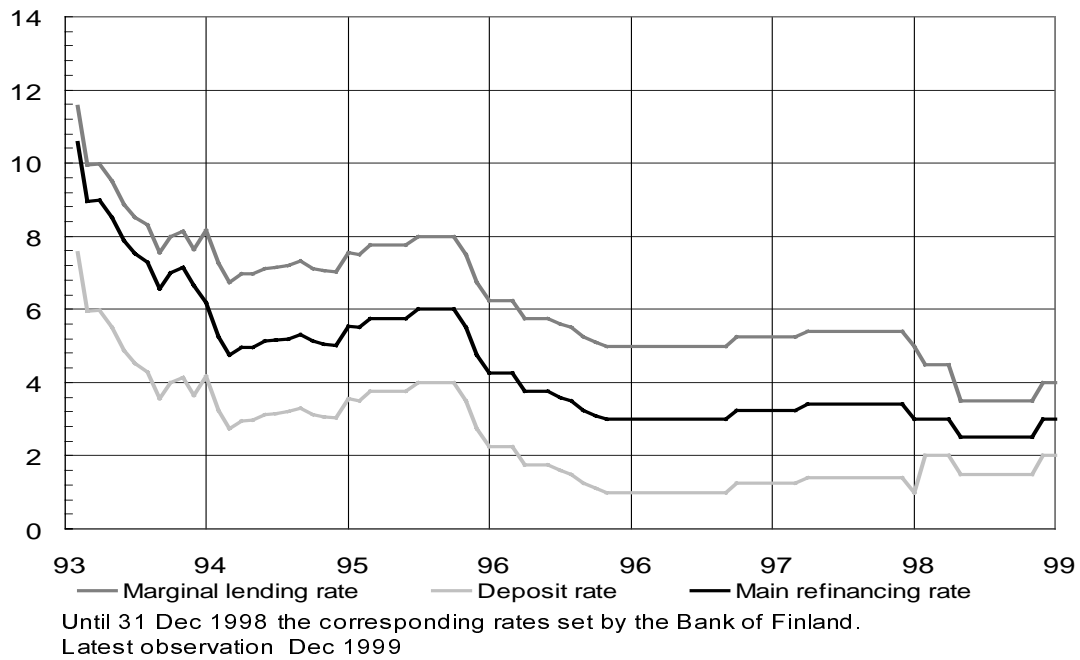
**RATES OF INTEREST SET BY EUROSISTEM**

Chart 30.

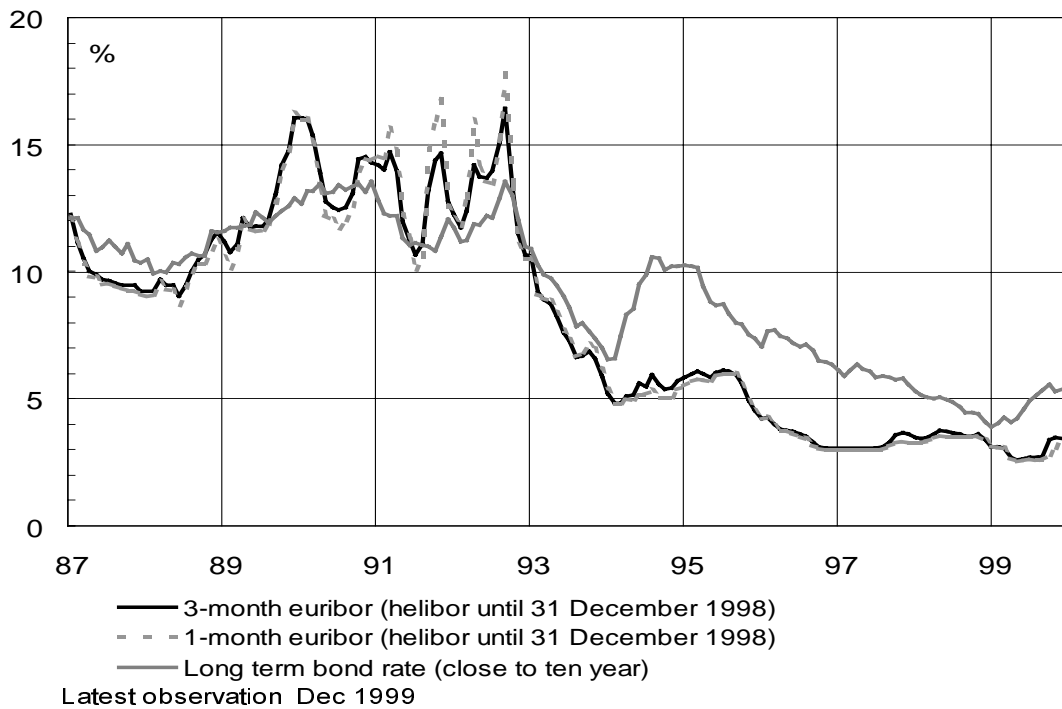
**KEY INTEREST RATES**

Chart 31.

## SHORT-TERM DOMESTIC AND FOREIGN INTEREST RATES

3-month interest rates, %

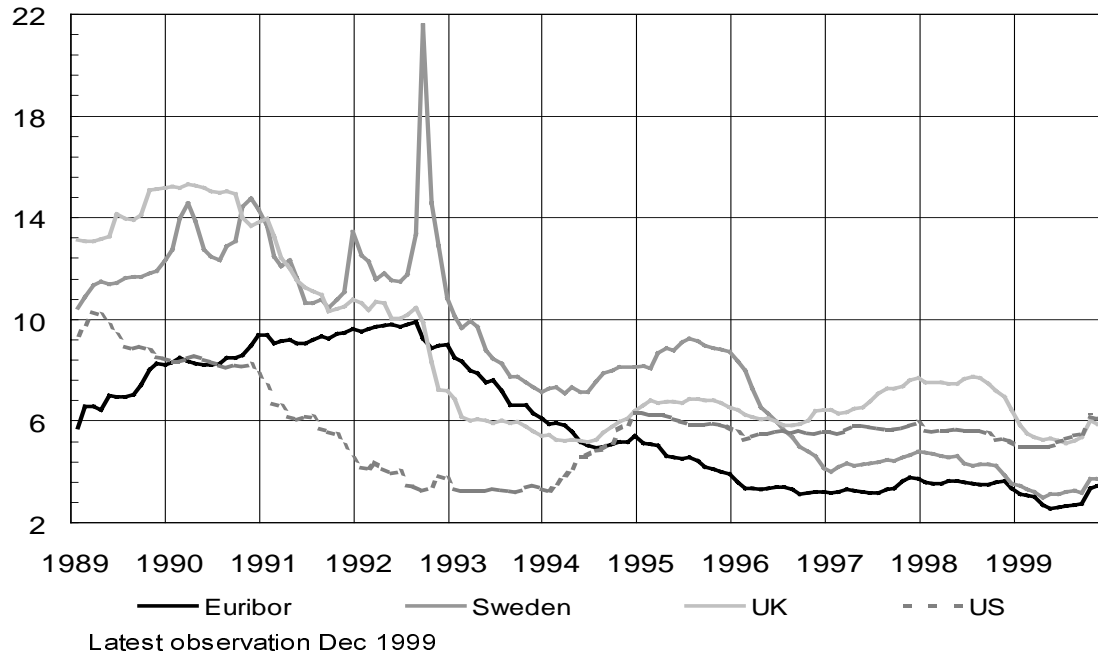


Chart 31.1.

## LONG-TERM DOMESTIC AND FOREIGN INTEREST RATES

Government bond yields, close to 10 year, %

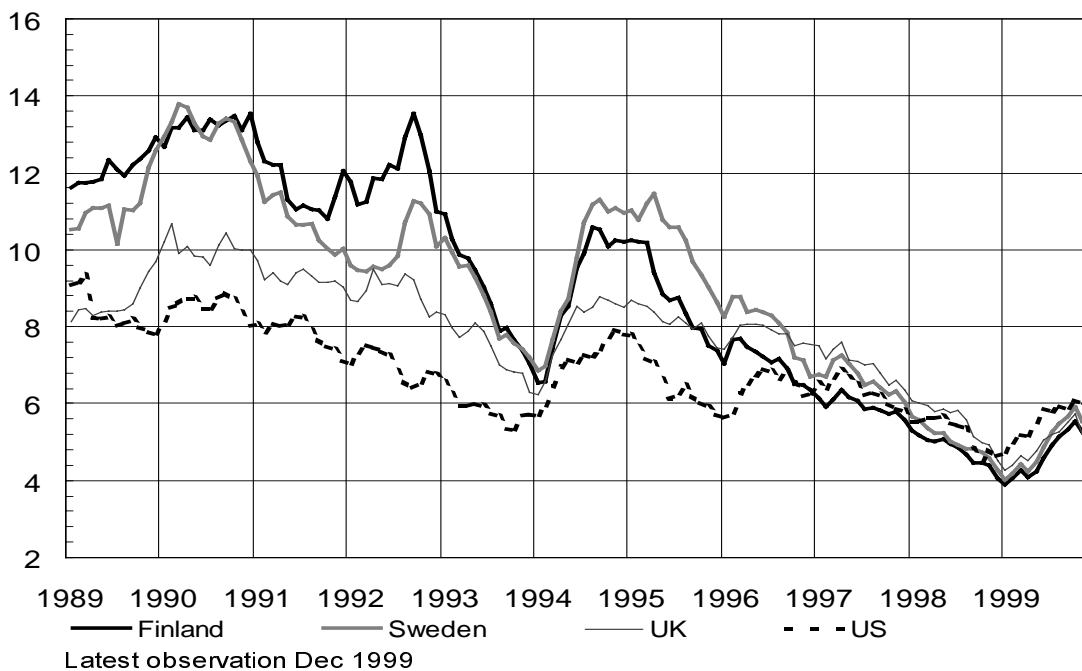
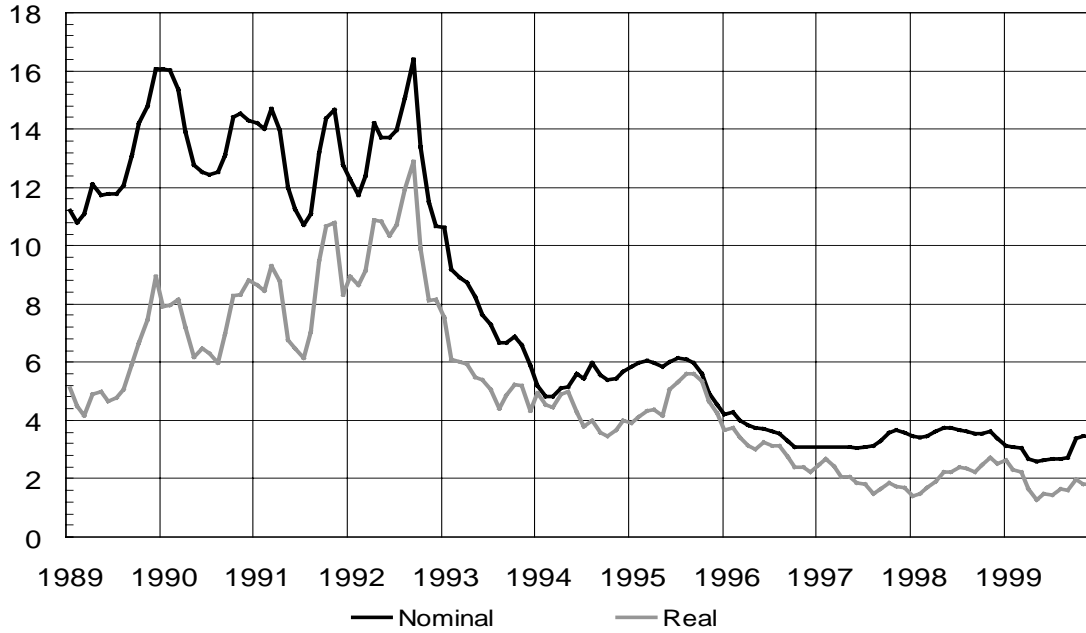


Chart 32.

### REAL AND NOMINAL INTEREST RATES

3-month interest rates, %

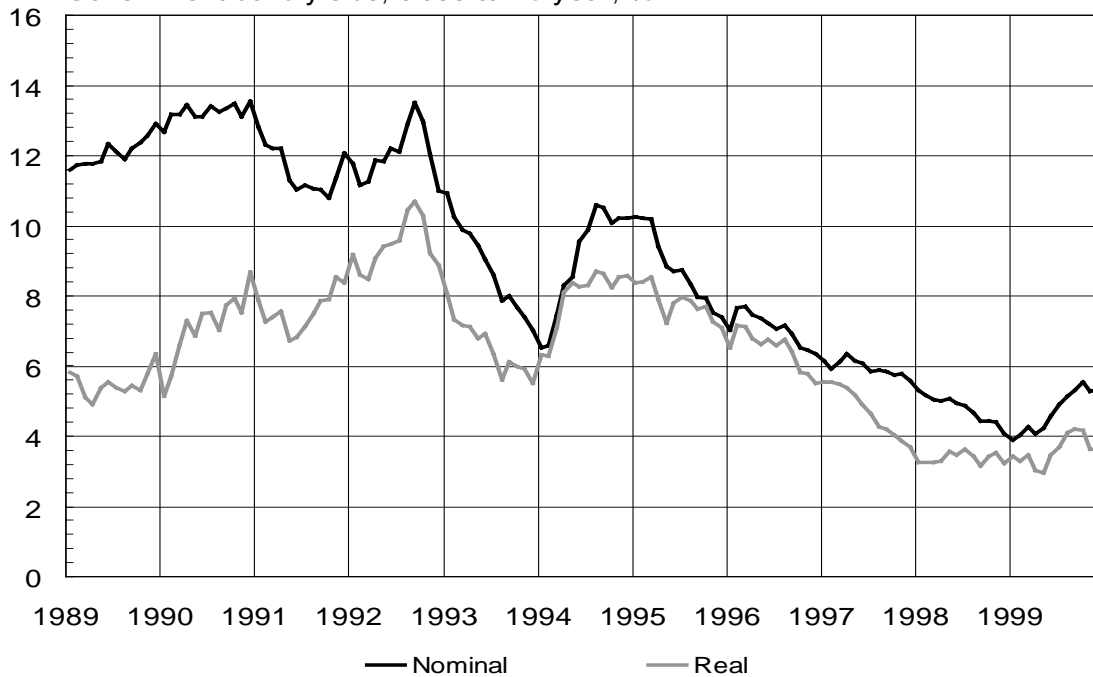


3-month euribor (from January 1999)  
 Latest observation Dec 1999

Chart 32.1.

### REAL AND NOMINAL INTEREST RATES

Government bond yields, close to 10 year, %



Latest observation Dec 1999

Chart 33.

**YIELD CURVE**

Maturities over one year based on government benchmark bonds, %

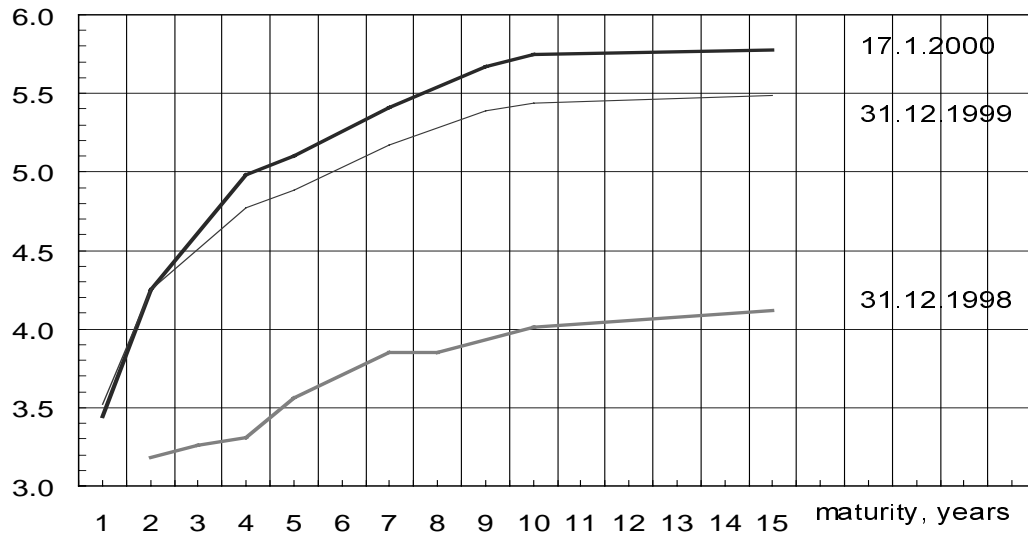


TABLE 4

### Interest rates and exchange rates

<b>Market rates</b> , %, daily averages	1999	6/99	7/99	8/99	9/99	10/99	11/99	12/99
EURIBOR (Helibor until 31 December 1998)								
1 month	2.862	2.605	2.635	2.614	2.584	2.763	3.061	3.509
3 months	2.961	2.627	2.676	2.695	2.727	3.376	3.468	3.446
6 months	3.054	2.680	2.898	3.053	3.107	3.457	3.484	3.512
12 months	3.183	2.836	3.030	3.237	3.301	3.684	3.689	3.826
Yields on government bonds								
5 years	4.07	3.78	4.15	4.45	4.60	4.93	4.72	4.79
10 years	4.74	4.58	4.92	5.15	5.32	5.56	5.27	5.36

### Exchange rates, daily averages

Exchange rates until 31 December 1998 are based on corresponding Finnish markka rates converted into euro rates at the fixed conversion rate 5.94573

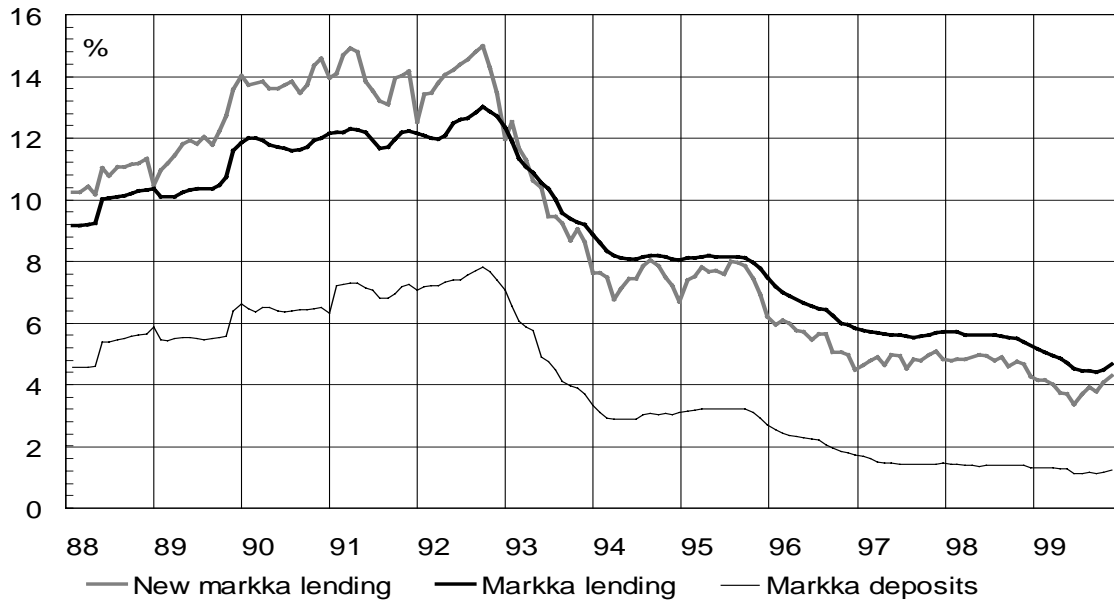
EUR exchange rate against  
US dollar, Pound sterling and Swedish krona

Daily average								
US dollar	1.066	1.038	1.035	1.060	1.050	1.071	1.034	1.011
Pound sterling	0.659	0.650	0.658	0.660	0.647	0.646	0.637	0.626
Swedish krona	8.807	8.828	8.745	8.752	8.634	8.727	8.633	8.586
Trade-weighted competitiveness indicator 1982=100								
	121.2	121.6	121.8	121.4	122.5	121.8	123.1	124.2



Chart 34.

### BANKS' MARKKA LENDING RATES AND MARKKA FUNDING RATES

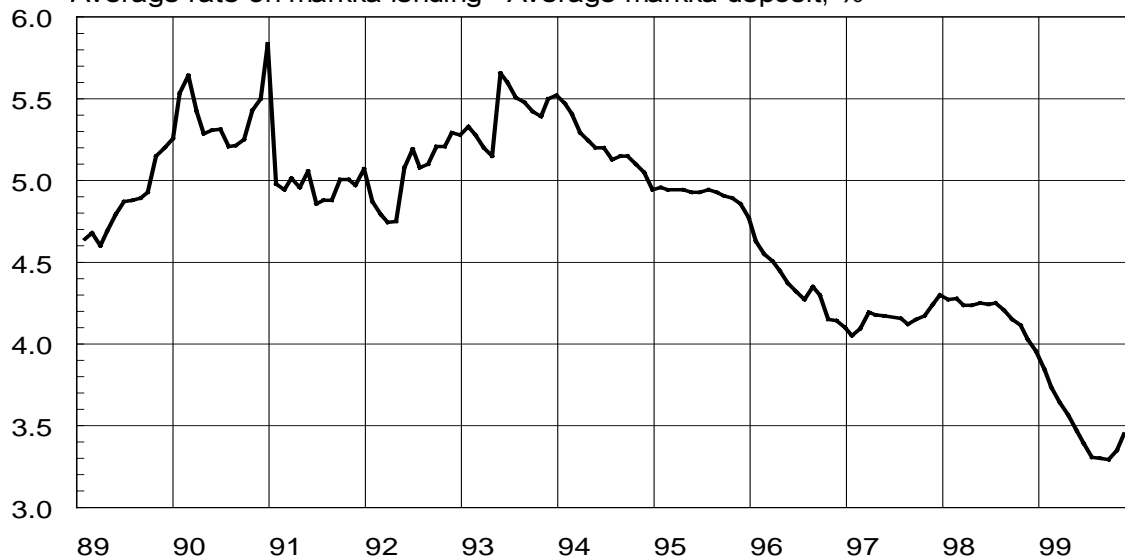


Latest observation Nov 1999

Chart 35.

### BANKS' INTEREST RATE MARGIN

Average rate on markka lending - Average markka deposit, %

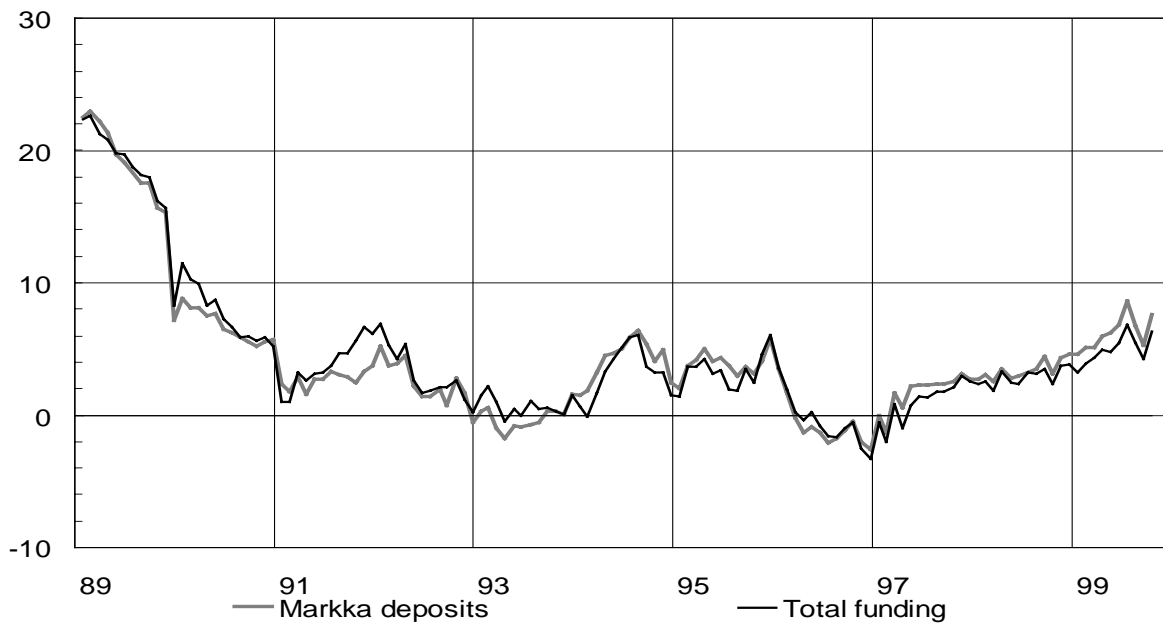


Latest observation Nov 1999

Chart 36.

**BANK FUNDING FROM THE PUBLIC**

12-month change, %

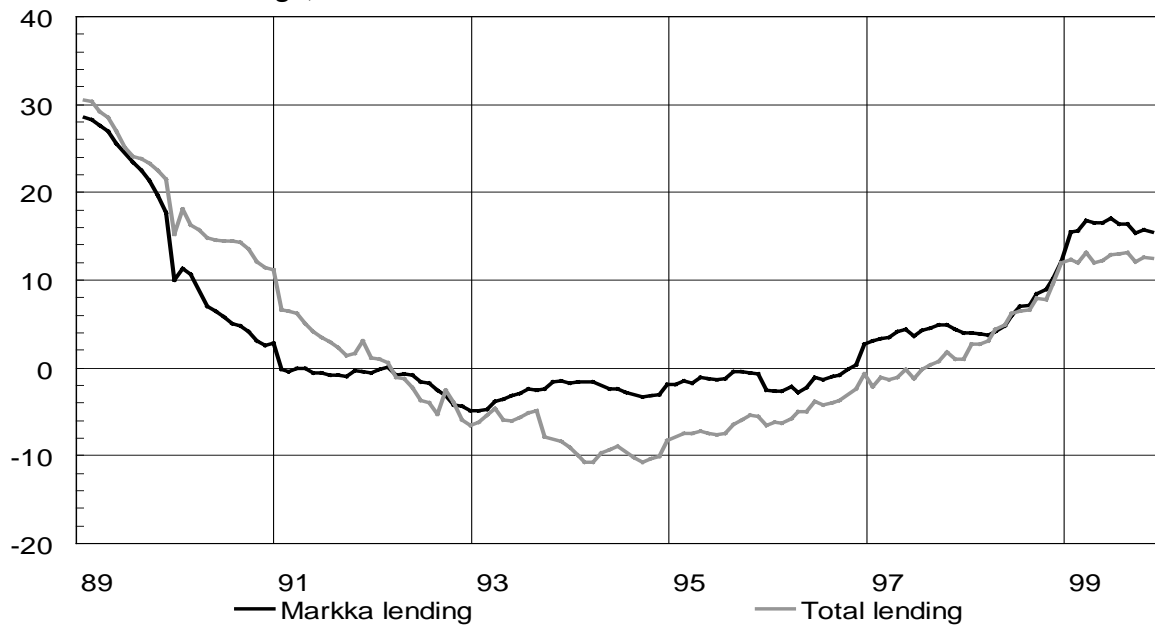


Latest observation Nov 1999

Chart 37.

**BANK LENDING TO THE PUBLIC**

12-month change, %



Latest observation Nov 1999

Chart 38.

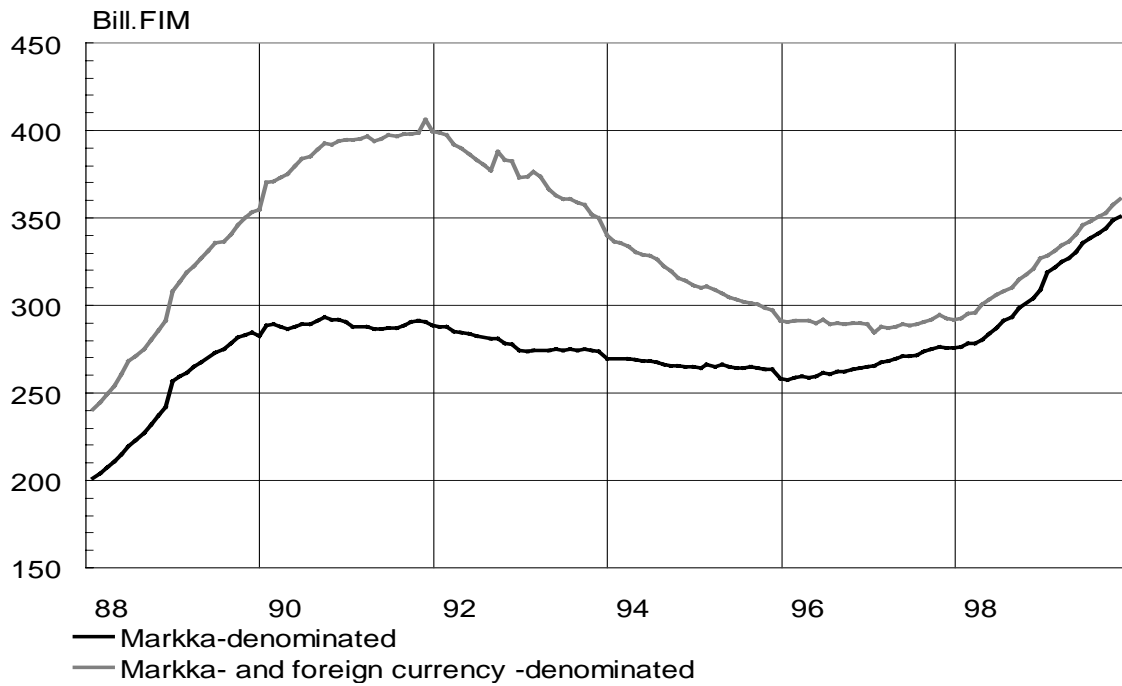
**OUTSTANDING BANK CREDIT**

Chart 39.

**HEX, HELSINKI EXCHANGES**  
**Share indices by sector**

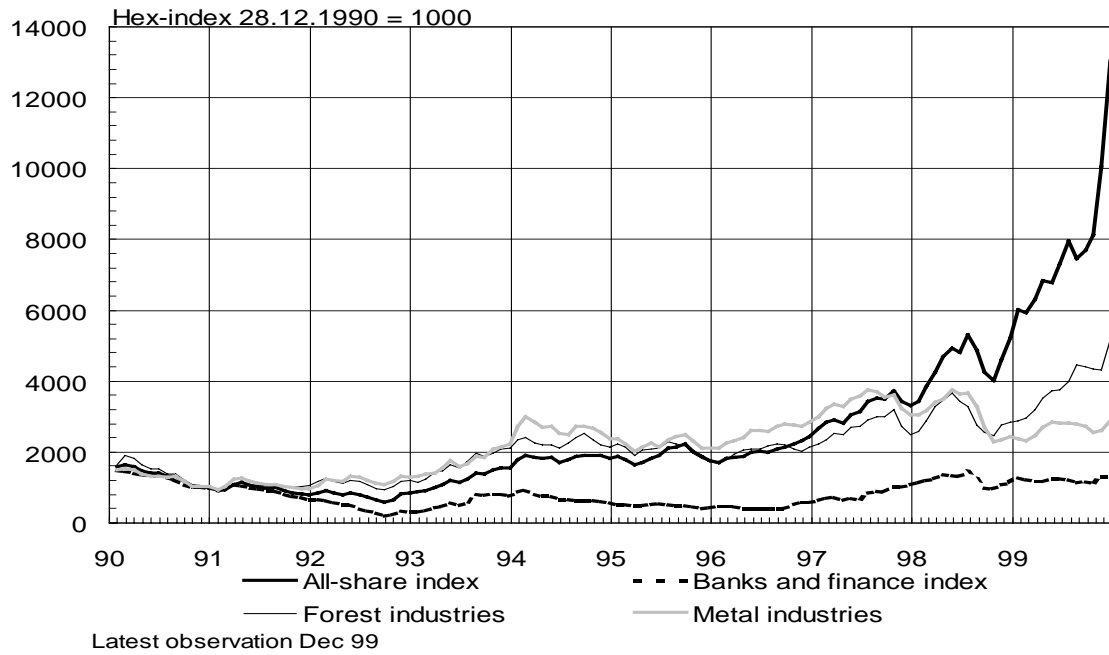


Chart 40.

**HEX HELSINKI EXCHANGES**  
**Share turnover**

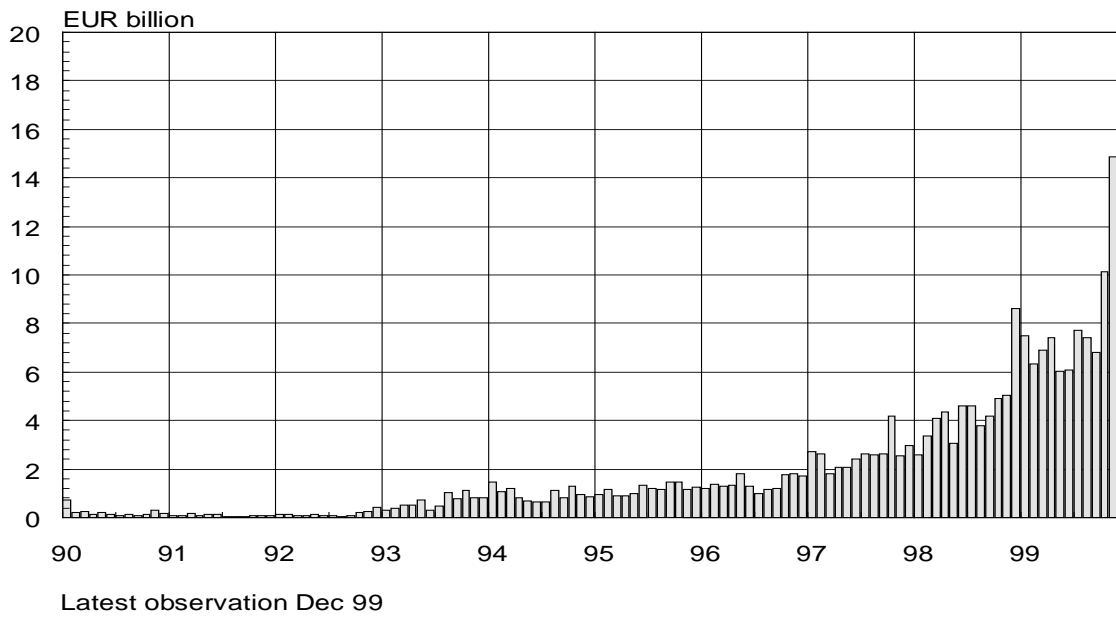


Chart 41.  
**HEX, HELSINKI EXCHANGES**  
**Market Value**

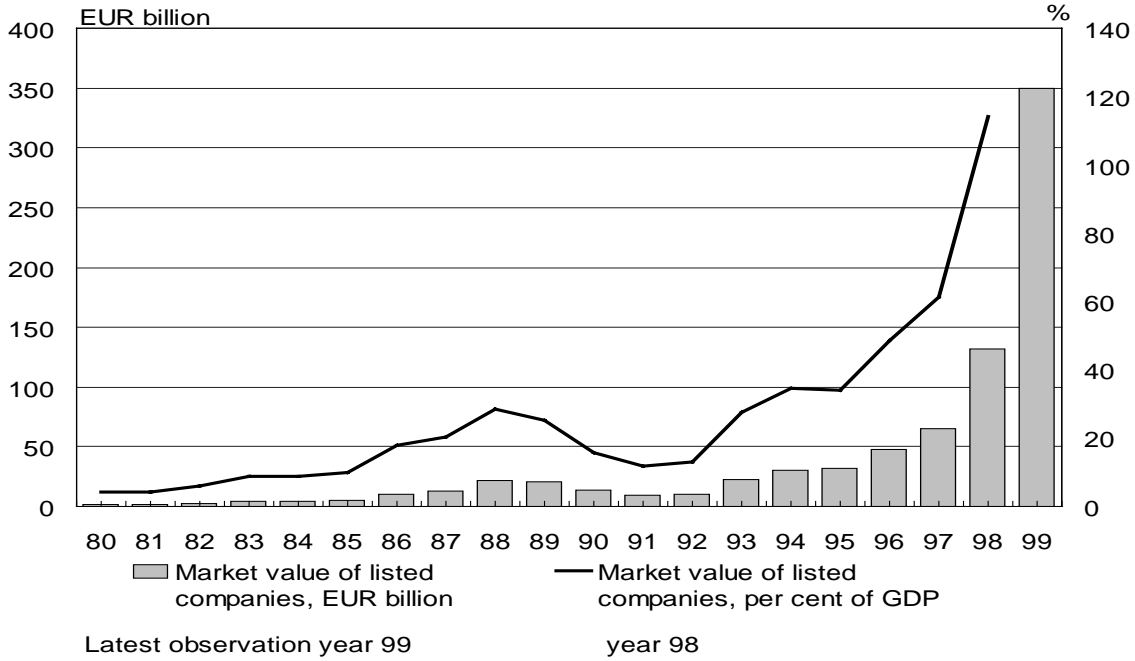


Chart 42.  
**GOVERNMENT BENCHMARK BONDS**

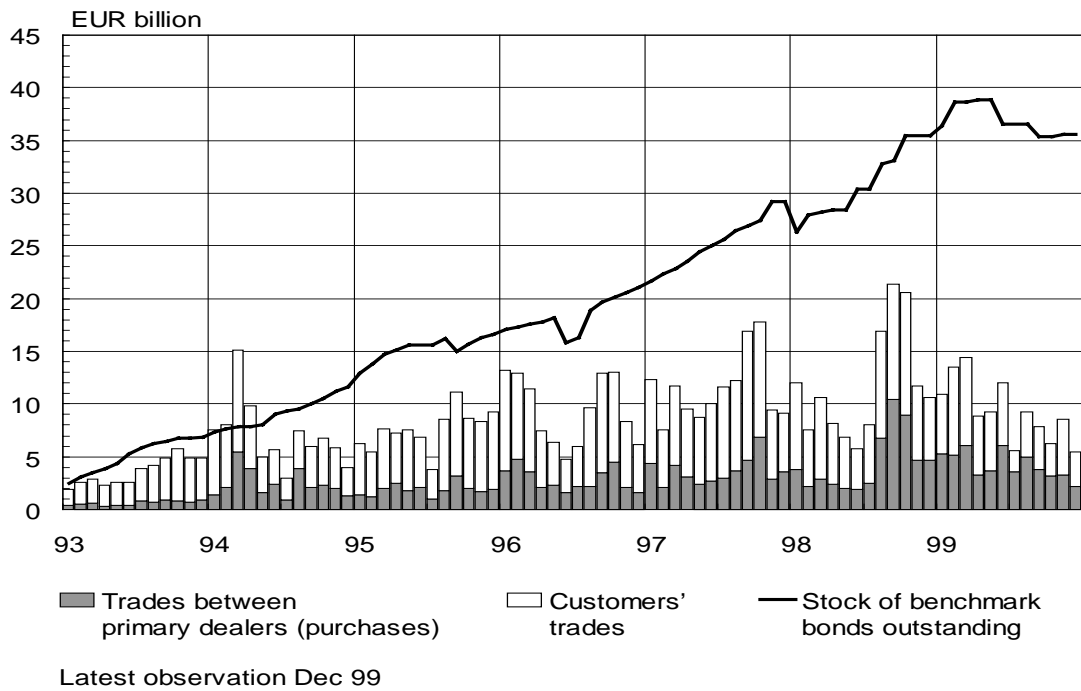
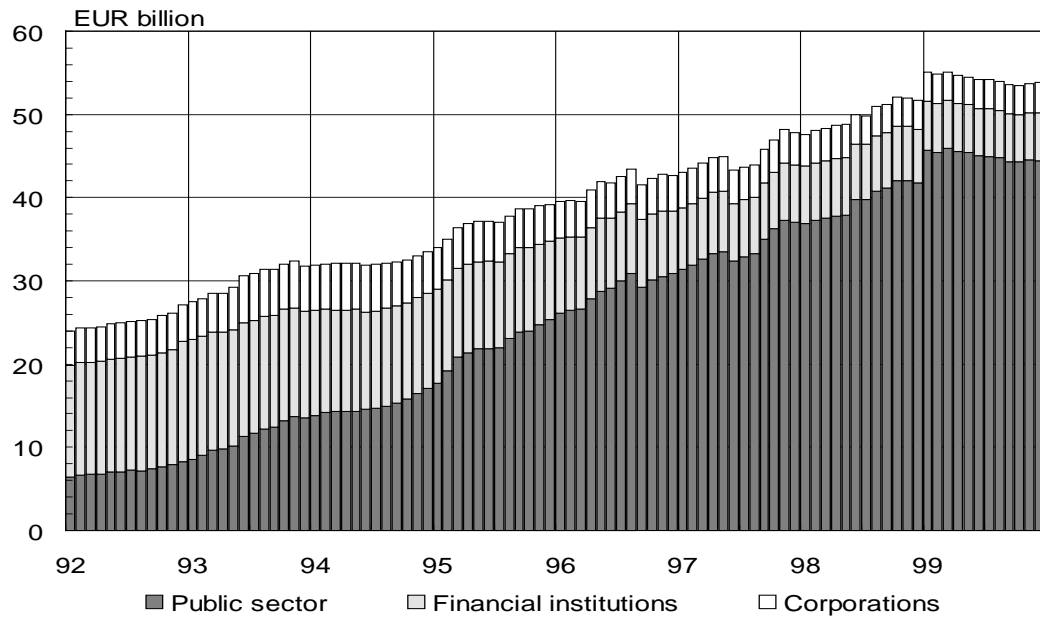
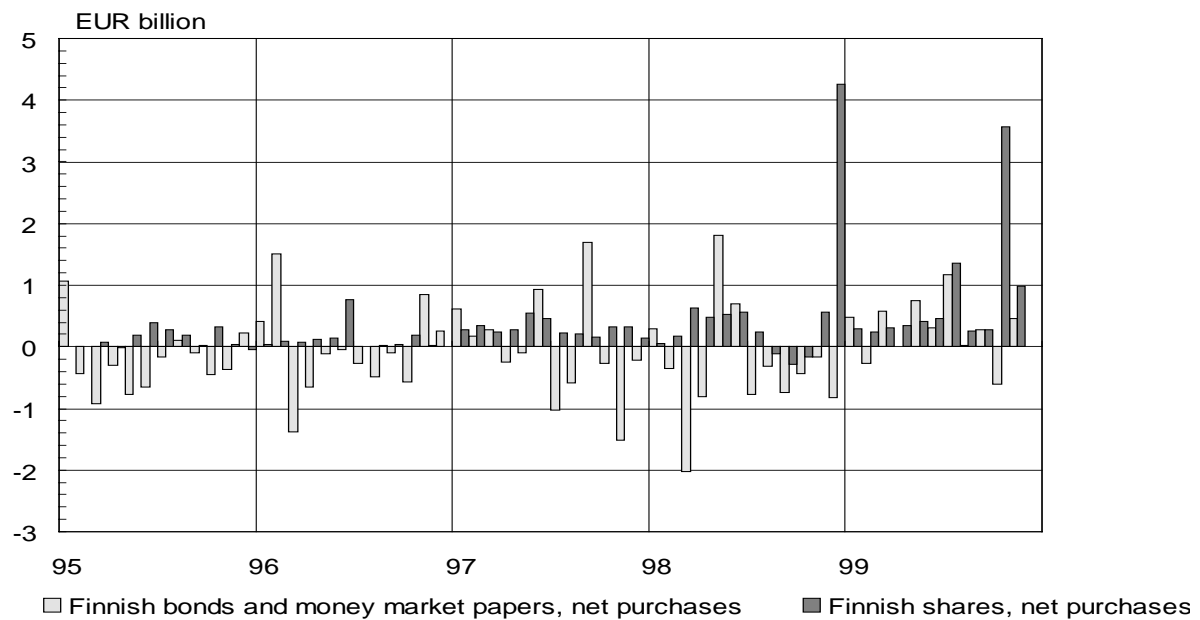


Chart 43.

**STOCK OF BONDS OUTSTANDING IN FINLAND**

Latest observation Dec 99

Chart 44.

**FOREIGN PORTFOLIO INVESTMENTS IN FINLAND**

Latest observation Nov 99

**TABLE 5****Key figures for the Finnish deposit banks, billions of FIM\***

<b>All deposit banks</b>	<b>1992</b>	<b>1993</b>	<b>1994</b>	<b>1995</b>	<b>1996*</b>	<b>1997*</b>	<b>1998*</b>	
Income from financial operations	10.7	13.0	13.7	12.4	11.0	11.7	13.6	
Other income	9.5	9.7	8.6	8.2	10.2	10.2	8.4	
Total income	20.2	22.7	22.3	20.6	21.2	21.9	22.0	
Expenses	14.9	15.3	16.4	15.5	12.8	12.0	11.5	
- pensionfund surplus refunded					1.2	1.5	0.6	
Depreciation	1.9	1.9	1.5	1.7	2.1	2.5	1.3	
Profit before credit and guarantee losses	3.4	5.5	4.4	3.4	7.5	8.9	9.8	
Credit and guarantee losses	14.0	14.7	11.2	6.2	3.7	2.4	1.6	
Profit before extraordinary items, appropriations and taxes	-10.6	-9.2	-6.8	-2.8	3.8	6.5	8.2	
Total assets	688.9	726.8	667.8	616.6	578.2	608.4	644.8	
Non-performing assets, net		35.9	25.4	19.6	12.3	8.3	5.5	
Capital adequacy, %	10.7	10.7	11.7	12.0	11.4	11.6	11.5	
	<b>1992</b>	<b>1993</b>	<b>1994</b>	<b>1995</b>	<b>1996</b>	<b>1997</b>	<b>1998</b>	<b>Nov 1999</b>
Markka deposits of the public	264.6	268.8	275.4	291.4	283.7	291.1	304.7	317.0
- 12-month percentage change	-0.5	1.6	2.5	5.8	-2.7	2.6	4.6	5.6
Markka lending to the public	274.4	269.8	264.7	258.0	265.0	275.7	309.1	350.8
- 12-month percentage change	-4.9	-1.7	-1.9	-2.5	2.7	4.0	12.1	15.5
Lending to the public (total)	373.2	339.6	311.8	291.5	289.1	292.0	326.8	360.7
- 12-month percentage change	-6.5	-9.0	-8.2	-6.5	-0.7	1.0	11.9	12.5

\* groups consolidated

\* For 1996 and 1997, the figures for the new cooperative banks group are used, previously separate figures for the OKO group and cooperative banks

\* For 1998, the figures of Merita Pankki Oyj are used, previously figures for the Merita Oyj